

PTEN

Professional Tool & Equipment News

The Independent Tool Authority

A comparative list of functions and features for a large selection of aftermarket scan tools from 27 equipment manufacturers.

JUNE 2019



2019 SCAN TOOL SPEC GUIDE

IN ASSOCIATION WITH THE FOLLOWING PTEN-AFFILIATED PUBLICATIONS:

Professional Distributor
Fleet Maintenance

SPONSORED BY:



MAX FLEX

1 TOOL. 3 WAYS TO FLEX

- 1. FULL COVERAGE WITH ANNUAL UPDATES.** | **2. CUSTOMIZED MONTHLY SUBSCRIPTION.** | **3. ENHANCED CODE READER/TABLET.**

Introducing the newest member of the Maximus diagnostic family – MaxFlex. This full featured, Android™ based diagnostic tablet with a kickstand was designed with pure flexibility to meet the needs and budget of any automotive technician.



FLEXIBLE COVERAGE TO FIT YOUR NEEDS:

- Code Reader
- Personalized On-Demand Coverage
- Full Annual Coverage
- MaximusFix Repair Database

Circle 250 on card, or enter at "e-inquiry" on VehicleServicePros.com

Ask your Matco Distributor or visit matcotools.com for more information about MaxFlex.

MATCO TOOLS 

BE A REPAIR HERO.

Quickly diagnose and repair with pinpoint accuracy regardless of vehicle make or model. Pair JPRO® Professional, the #1 in-shop diagnostic and repair tool, with NextStep's integrated troubleshooting information for the best all-in-one solution. JPRO prioritizes vehicle issues and NextStep™ guides users to address the root cause of the problem. Go from fault to fix faster than ever and be the hero your shop needs.



JPRO
PROFESSIONAL



NEXTSTEP
SERVICE & REPAIR INFORMATION

#1 DIAGNOSTIC & REPAIR SOLUTION

INDUSTRY-LEADING BI-DIRECTIONAL TESTS | COMPREHENSIVE VEHICLE COVERAGE | US-BASED SUPPORT

Circle 251 on card, or enter at "e-inquiry" on VehicleServicePros.com

Learn More: www.noregon.com/jpro/PTEN
For Available Discounts CALL: (855) 889-5776



NOREGON
VEHICLE DATA EXPERTS

©2019 Noregon. All Rights Reserved. JPRO is a registered trademark of Noregon.

2019 SCAN TOOL SPEC GUIDE

CONTENTS

**OBD-II GENERIC
SCAN TOOLS**
PAGE 8

**HEAVY DUTY
SCAN TOOLS**
PAGE 24

**OBD-II ENHANCED
SCAN TOOLS**
PAGE 12

**COMPANY
DIRECTORY**
PAGE 30

Folks love us for our Heavy Duty Truck & Off-highway Coverage.
WE'RE ABOUT TO CHANGE THAT.

The CanDo **C-Pro** is a fully loaded, full functionality scan tool complete with bi-directional controls, special test functions and a full suite of activations and service resets.

Packaged in an 8" Android tablet that is Bluetooth wireless to the car, Wi-Fi to the internet, intuitive to use and easy to update - the **C-Pro** also includes our ASE Remote Technician function at no extra charge!



**EUROPEAN, ASIAN & DOMESTIC
PASSENGER CARS & LIGHT TRUCKS
FULLY COVERED.**

CanDo

www.candointl.com • 909-Cando-11 (226-3611) INTERNATIONAL, INC.

Circle 252 on card, or enter at "e-inquiry" on VehicleServicePros.com

X-431 THROTTLE

The **X-431 Throttle** is a full comprehensive diagnostic tool, which includes a charging base. It is based on the Android™ 7.1 System, which supports dual band WiFi (2.4 Ghz & 5Ghz) Communication. It has wide Coverage on most models, strong diagnostic capabilities, accurate detection data, IP 65 Rated.



NEW 2 HOUR QUICK CHARGE TECHNOLOGY



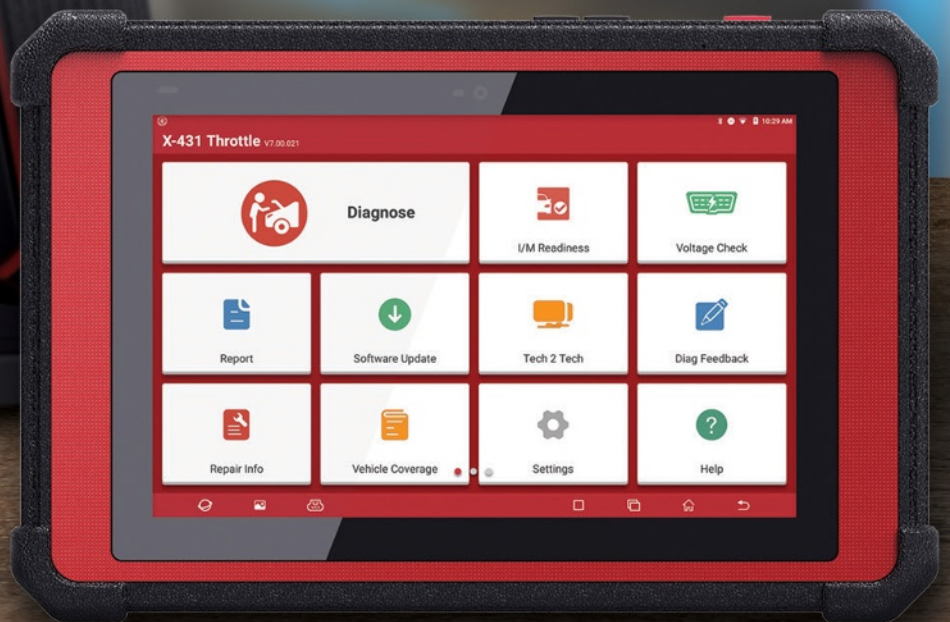
WILL SUPPORT LAUNCH'S NEW ADAS



13 MP REAR CAMERA



NEW HIGHER RESOLUTION AND BRIGHTER DISPLAY



Circle 253 on card, or enter at "e-inquiry" on VehicleServicePros.com

Welcome to the 2019 Scan Tool Spec Guide, brought to you by *Professional Tool & Equipment News*, *Professional Distributor* and *Fleet Maintenance* magazines.

The mission of any vehicle service shop is to maintain and repair vehicles as efficiently as possible. Technicians strive to provide high quality workmanship in order to get customers' vehicles back on the road quickly and keep them there. In order to do this, technicians need various tools and equipment: everything from basic hand tools to computerized diagnostic scan tools providing minute details about virtually every vehicle system.

According to the most recent *PTEN* purchasing study (published in the April issue of *PTEN* and *Professional Distributor* magazines), a full 90 percent of the 485 shop owners and technicians surveyed said they already own a scan tool. And, the scan tool market is expected to continue growing, with 58 percent surveyed saying they plan to purchase a scan tool this year.

A GROWING MARKET

Scan tools are particularly important when diagnosing vehicles with the latest technologies onboard. New infotainment systems control everything from the radio to climate control; advanced driver assistance systems (ADAS) can utilize cameras and other sensors to provide steering, acceleration, and brake input in some instances, all while monitoring the vehicle's surroundings; emissions controls are more stringent than ever to meet strict government regulations; and hybrid and full-electric vehicles use high tech batteries and components that can only be diagnosed

using a scan tool.

A 2019 Global Market Insights report, *Automotive Diagnostic Scan Tools Market Report, 2025*, estimates the scan tool market will increase from \$33.91 billion last year to nearly \$50 billion by 2025. In addition to the latest vehicle technologies, the report attributes the rise to increased overall vehicles sales and a higher number of repair shops.

WHICH SCAN TOOL IS RIGHT FOR YOU?

While scan tools and diagnostic information are available from OEMs, these may not be practical for every shop to purchase and continually update considering the range of makes the shop services. Aftermarket scan tools are typically compatible with a variety of vehicle makes, making them a more pragmatic solution in many cases. In fact, over 40 percent of *PTEN* purchasing study respondents said they only use aftermarket scan tools. With a wide variety of aftermarket scan tools available, choosing the one best suited for your shop comes down to your needs.

The 2019 Scan Tool Spec Guide compares the most up-to-date information from 27 aftermarket scan tool manufacturers. Take a look at the next several pages and discover the convenient comparisons in the OBD-II Generic, OBD-II Enhanced, and Heavy Duty categories. Keep this guide on-hand as you consider the best scan tool for your shop.

Extensive Coverage and Comprehensive Performance !!!

- ✓ Truck, ✓ Off road, ✓ Passenger and ✓ Bike;
- ✓ Engine, ✓ Transmission, ✓ ABS, ✓ DPF and ✓ Body/IC
- ✓ Diagnostic and OEM level function
- ✓ Calibration and maintenance feature
- ✓ Fast and affordable price
- ✓ Scanning report and data export
- ✓ Integrated 3rd party wiring/info system
- ✓ Financial purchase option
- ✓ Hardware warranty & local support
- ✓ Durable and industrial hardware
- ✓ Printing and integrated 3rd party APP

Allison	Eaton	Kenworth	Sterling
Bendix	Freightliner	Mack	Volvo/Mack
Caterpillar	Hino	Mitsubishi Fuso	Voith
Cummins	International	PACCAR MX	Western Star
Detroit	John Deere	Peterbilt	Wabco
Duramax	Isuzu	Powerstroke	More vehicle makers

HD diagnostic scanner and equipment



- ➔ **Wireless HD Scanners**
Smart and advanced diagnostic system with Android wireless/bluetooth/WIFI tablet
Model: F7SN; F7SG; F7SW, F7SB, F6Plus,
- ➔ **Handheld HD Scanners**
Simple, direct wired scanner:
Model: F506, F3SN ; F3SG
- ➔ **Wheel Aligners**
Simple, portable and accuracy, fit all existing lift
Model: FD505, FD503, FD501
- ➔ **AC Recover, Recycle and Recharge Machines**
Smart and automatic, and cover both R-134A, R-1234YF refrigerant



Support Tel: 443-380-0088, Toll Free: 844-322-7872 www.fcarusa.com

Circle 254 on card, or enter at "e-inquiry" on VehicleServicePros.com

INTELLIGENCE RUNS IN OUR FAMILY



APOLLO-D8™

TRITON-D8™

ZEUS®

The only question is, which tool is right for your needs?

APOLLO-D8, TRITON-D8 and ZEUS are the world's first and only tools that feature Intelligent Diagnostics. It's an exclusive Snap-on® game-changer that saves you time and eliminates missteps by guiding you directly to the fix. Fast. And with three different price points and a variety of built-in features like scope and shop management tools, it's even easy to find your way to the platform that's perfect for you and your shop.

To learn more, talk to your Snap-on Franchisee. Or visit diagnostics.snapon.com

Snap-on®

Circle 255 on card, or enter at "e-inquiry" on VehicleServicePros.com

INTELLIGENT DIAGNOSTICS.
SPEED, CERTAINTY, PROFITABILITY.

OBD-II GENERIC

COMPANY	ALLDATA	Autel	Autoland Scientech USA	Automotive Test Solutions	Bosch	FCAR Tech USA
PRODUCT NAME	ALLDATA Diagnostics	MD808Pro	iSCAN-e	EScan Elite	3210 CodeConnect with ABS and Airbag	F7SW
Price						
Under \$500	\$199/month	●	●		●	
\$501-\$2,000				●		●
\$2,001 to \$4,500						
\$4,501 to \$10,000						
Scanning Functions (1996 to Present)						
Reads generic data and monitors (Mode 1)	●	●	●	●	●	●
Displays freeze frame data (Mode 2)	●	●	●	●	●	●
Reads DTCs (Mode 3)	●	●	●	●	●	●
Clears all DTCs for all systems (Mode 4)	●	●	●	●	●	●
Reads test results for oxygen sensors (Mode 5)	●	●	●	●	●	●
Reads test results for other component/system monitoring (Mode 6)	●	●	●	●	●	●
IF YES ABOVE: Provides test result definitions or raw hexadecimal data?		●	Both	●	Raw hex for Non-CAN, text for CAN vehicles	●
Reads pending DTCs (Mode 7)	●	●	●	●	●	●
Bidirectional control (actuator tests) (Mode 8)	●	●	●		●	●
Vehicle information - VIN # - (Mode 9)	●	●	●	●	●	●
Reads permanent DTCs (Mode 0A)	●	●	●	●	●	●
Other Functions						
Anti-theft/key duplication						●
Electronic brake service	●	●	●		●	●
Inspection interval lights	●	●	●			●
Graphs live data on screen	●	●	●	●	●	●
Graphs multiple PIDs on screen simultaneously	●	●	No limit	●	2	●
Record and play back OBD-II live data		●	●	●	●	●
Reset oil lights	●	●	●		●	●
Steering angle service	●	●	●		●	●
Vehicle search capability/scanning by VIN	●	●	●	●	●	●
Remote Diagnostics			by 3rd party software			
Specific System Coverage & Enhanced Bidirectional Controls						
Body control - BCM (list codes, data, or both)	Both	Both	Both			Both
Chassis control - BCM (list codes, data, or both)	Both	Both	Both			Both
Powertrain control - PCM (list codes, data, or both)	Both	Both	Both	Both	Both	Both
ABS coverage (list codes, data, or both)	Both	Both	Both		Both	Both
SRS coverage (list codes, data, or both)	Both	Both	Both		Codes	Both
HVAC (list codes, data, or both)	Both	Both	Both			Both
OBD-I Adapters (Pre-1996)						
Domestic coverage		●	●			●
Asian coverage		●	●			●
European coverage	●	●	●			●
Unit Features						
Unit type (handheld, PC-based, or tablet)	User Defined	Handheld	Tablet	PC-based	Handheld	Tablet
Requires separate laptop or PC (see "Unit Type")	PC or tablet		Tablet	Windows PC or tablet		
Operating system	Windows 10 or Android	Embedded	Android	Windows XP through 10	Proprietary	Android

OBD-II GENERIC

COMPANY	ALLDATA	Autel	Autoland Scientech USA	Automotive Test Solutions	Bosch	FCAR Tech USA
PRODUCT NAME	ALLDATA Diagnostics	MD808Pro	iSCAN-e	EScan Elite	3210 CodeConnect with ABS and Airbag	F7SW
Unit Features, cont.						
Hard drive size		32 GB		1 GB		20 GB
Built-in memory or memory on included SD card (in GB)		●			128 MB	2 GB
Multilingual - on screen definitions in English/Spanish/French		●	●		●	●
Length of time to fully charge unit						4 hours
Length of time unit runs on one charge						8 hours
Unit boot-up time (from "on" button to usable screen)	15 seconds	10 seconds	Instant-on		Instant-on	8 seconds
High-resolution color screen		●	User define	●	●	●
Touchscreen interface	●		●	User defined		●
Screen size	7" and Above	4"		User defined	3"	10.5"
Printable vehicle diagnostic report capabilities		●	●	●		●
USB port		●		●	●	●
VGA port						●
HDMI port						●
Wireless VCI (unit-to-car capabilities)	●		●	●		●
Wi-Fi / Internet capable	●		●	●		●
Available Tool Add-Ons						
5-gas analyzer				Yes (add-on)		●
TPMS resets	●		●			●
TPMS relearns	●		●			●
Labscope capability				Yes (add-on)		
J2534 reflash and pass-thru diagnostic capability						
Multimeter				Yes (add-on)		
Software, Website, Support & Service Features						
Manufacturers warranty	3 years for hardware	1 year	1 year	1 year	1 year	1 year
Call-in support	800-859-3282	855-288-3587	1-877-833-4728	505-265-5077	800-533-6127	443-380-0088
Field/Rep support	●	●			●	●
Pay-as-you-go subscription		No Charge for Updates				
Length of subscription	3 years	Lifetime	Yearly / Monthly	1 year		2 years
Updatable via the Internet	●	●	●	●	●	●
Frequency of updates, if applicable	3 times per year	As needed	Always up to date	As needed	As needed	As needed
Cost per update	Free	Free	First year free	Free for at least 1 year	Free	\$500
Optional repair solutions for VIN-specific fixes	●	●			●	●
Optional diagnostic and repair procedure instructions + videos	●	●		●		
Includes the following repair information services - e.g. Identifix, Mitchell 1, etc. (list all that apply)	ALLDATA					Motor/ Mitchell 1/ All Data
Interfaces with the following shop management systems						
Most Important Feature	Seamless integration with ALLDATA	Scan all modules	Superior OBD I and II European Asian coverage for enthusiasts	Sharp shooter, relative compression, acceleration, deceleration	30+ million fixes on- tool via CodeConnect repair database	Fast, simple, and easy diagnostic

2019 SCAN TOOL SPEC GUIDE

Injectronic	Innova	Launch Tech USA	Mac Tools	MAHLE	Matco Tools	TOPDON	Zurich
CJ250	5100 CarScan ABS/SRS	Millennium Master	ET1510ANX	TechPRO VDS1000	MDMAXFLEX	ArtiPadI	ZR15 OBD2 Active Scan Pro Code Reader
			1 GB		2 GB		
	●	8 GB	●		46 GB	64 GB	4 GB
●	●	●	●		●	●	English / Spanish / French
		4 hours			2 - 4 hours	2 hours	
		5 hours			6 - 8 hours	6 hours	
	10 seconds	5 seconds	15 seconds		39 seconds	25 seconds	10 seconds
	●	●			1280 - 800	●	320 ● 480
		●			●	●	No
2.8"	2.8"	5"			10.1"	12	3.5"
●		●	●	●	●	●	●
●	●		●		●	●	●
						●	
				●	●	●	
		●			●	●	
					Supports onboard procedures activation tool required for some makes	●	
					Supports onboard procedures activation tool required for some makes	●	
						●	
1 year	1 year	1 year	1 year	1 year	2 years	1 year	90 days
	800-544-4124	877-528-6249	800-Mac-Tools	800-468-2321	877-853-3738	855-909-8960	800-444-3353
	●		●		●		
	●			●	●		
	1 year	Lifetime			Flexible	1 year	
●	●	●	●	●	●	●	●
	Other	Monthly	As needed	Monthly Average	Monthly, as needed, Yearly	Quarterly	Yearly
	Free	Free	Free		Starting at \$20 Monthly	\$799	Free
	●		●		MaxFix Optional	●	
	●				MaxFix Optional		
	RepairSolutions					Motor	
Easy to use and power packed	Network Scan	Wi-Fi Based Android tablet with enhanced ABS/SRS/Trans/ENG and 9 reset functions	Enhanced datastream with bidirectional coverage and brake bleed	Auto-identify modules, fast and easy diagnosis and repair	Flexible software to fit today's technicians' budget		System scan; active test; steering angle reset; 3.5" color display; graph 4 parameters

OBD-II ENHANCED

COMPANY NAME	AirPro Diagnostics, LLC	ALLDATA	Autel	AutoEnginuity	Autoland Scientech USA	Autologic	Bosch	CanDo International
PRODUCT NAME	AirPro	ALLDATA Diagnostics	MS906TS	Giotto ProLine SP02	VeDiS 3+	DrivePro	ADS 625	CPro
Price								
Under \$500		\$199/month						
\$501-\$2,000			●	●	●			●
\$2,001 to \$4,500	●				●		●	
\$4,501 to \$10,000						●	●	
More than \$10,000								
Scanning Functions (1996 to Present)								
Fully supports all 10 modes of OBD-II scan tool operation (Mode 1 through Mode OA)	●	●	●	●	●	●	●	●
Other Functions								
Anti-theft/key duplication			●	Ford/GM	●	●	●	●
Electronic brake service	●	●	●	●	●	●	●	●
Guided tests/on-screen help	●	●	●	●	●	●	●	
Inspection interval lights	●	●	●	●	●	●	●	●
J2534 reflash and pass-thru diagnostic capability	●				●	●	●	
Record and play back OBD-II live data	●		●	●	By 3rd party software		●	●
Reset oil lights	●	●	●	●	●	●	●	●
Steering angle service	●	●	●	●	●	●	●	●
Vehicle search capability/scanning by VIN	●	●	●	●	●	●	●	
Graphs live data on screen	●	●	●	●	●	●	●	●
Graphs multiple PIDs on screen simultaneously	8	●	●	8	No limit		8	4
Remote diagnostics	●		●	●	●	●		●
Specific System Coverage Data and Bidirectional Controls								
Body control - BCM (Data/Bidirectional Control)								
Chrysler	Y/Y	Y/Y	Y/Y	Y/Y	Y/Y	Y/Y	Y/Y	Y/Y
Ford	Y/Y	Y/Y	Y/Y	Y/Y	Y/N	Y/Y	Y/Y	Y/Y
GM	Y/Y	Y/Y	Y/Y	Y/Y	Y/Y	Y/Y	Y/Y	Y/Y
Honda	Y/Y	Y/Y	Y/Y	Y/Y	Y/Y	Y/Y	Y/Y	Y/Y
Hyundai	Y/Y	Y/Y	Y/Y	Y/Y	Y/Y	Y/Y	Y/Y	Y/Y
Mazda	Y/Y	Y/Y	Y/Y	Y/Y	Y/N	Y/Y	Y/Y	Y/Y
Nissan	Y/Y	Y/Y	Y/Y	Y/Y	Y/Y	Y/Y	Y/Y	Y/Y
Toyota	Y/Y	Y/Y	Y/Y	Y/Y	Y/Y	Y/Y	Y/Y	Y/Y
BMW	Y/Y	Y/Y	Y/Y	Y/Y	Y/Y	Y/Y	Y/Y	Y/Y
Mercedes Benz	Y/Y	Y/Y	Y/Y	Y/Y	Y/Y	Y/Y	Y/Y	Y/Y
Volkswagen	Y/Y	Y/Y	Y/Y	Y/Y	Y/Y	Y/Y	Y/Y	Y/Y
Volvo	Y/Y	Y/Y	Y/Y	Y/Y	Y/Y	Y/Y	Y/Y	Y/Y
Chassis control - BCM (Data/Bidirectional Control)								
Chrysler	Y/Y	Y/Y	Y/Y	Y/Y	Y/Y	Y/Y	Y/Y	Y/Y
Ford	Y/Y	Y/Y	Y/Y	Y/Y	Y/N	Y/Y	Y/Y	Y/Y
GM	Y/Y	Y/Y	Y/Y	Y/Y	Y/Y	Y/Y	Y/Y	Y/Y
Honda	Y/Y	Y/Y	Y/Y	Y/Y	Y/Y	Y/Y	Y/Y	Y/Y
Hyundai	Y/Y	Y/Y	Y/Y	Y/Y	Y/Y	Y/Y	Y/Y	Y/Y
Mazda	Y/Y	Y/Y	Y/Y	Y/Y	Y/N	Y/Y	Y/Y	Y/Y
Nissan	Y/Y	Y/Y	Y/Y	Y/Y	Y/Y	Y/Y	Y/Y	Y/Y

OBD-II ENHANCED

COMPANY NAME	AirPro Diagnostics, LLC	ALLDATA	Autel	AutoEnginuity	Autoland Scientech USA	Autologic	Bosch	CanDo International
PRODUCT NAME	AirPro	ALLDATA Diagnostics	MS906TS	Giotto ProLine SPO2	VeDiS 3+	DrivePro	ADS 625	CPro
Chassis control, cont.								
Toyota	Y/Y	Y/Y	Y/Y	Y/Y	Y/Y	Y/Y	Y/Y	Y/Y
BMW	Y/Y	Y/Y	Y/Y	Y/Y	Y/Y	Y/Y	Y/Y	Y/Y
Mercedes Benz	Y/Y	Y/Y	Y/Y	Y/Y	Y/Y	Y/Y	Y/Y	Y/Y
Volkswagen/Audi	Y/Y	Y/Y	Y/Y	Y/Y	Y/Y	Y/Y	Y/Y	Y/Y
Volvo	Y/Y	Y/Y	Y/Y	Y/Y	Y/Y	Y/Y	Y/Y	Y/Y
Powertrain control - PCM (Data/Bidirectional Control)								
Chrysler	Y/Y	Y/Y	Y/Y	Y/Y	Y/Y	Y/Y	Y/Y	Y/Y
Ford	Y/Y	Y/Y	Y/Y	Y/Y	Y/N	Y/Y	Y/Y	Y/Y
GM	Y/Y	Y/Y	Y/Y	Y/Y	Y/Y	Y/Y	Y/Y	Y/Y
Honda	Y/Y	Y/Y	Y/Y	Y/Y	Y/Y	Y/Y	Y/Y	Y/Y
Hyundai	Y/Y	Y/Y	Y/Y	Y/Y	Y/Y	Y/Y	Y/Y	Y/Y
Mazda	Y/Y	Y/Y	Y/Y	Y/Y	Y/N	Y/Y	Y/Y	Y/Y
Nissan	Y/Y	Y/Y	Y/Y	Y/Y	Y/Y	Y/Y	Y/Y	Y/Y
Toyota	Y/Y	Y/Y	Y/Y	Y/Y	Y/Y	Y/Y	Y/Y	Y/Y
BMW	Y/Y	Y/Y	Y/Y	Y/Y	Y/Y	Y/Y	Y/Y	Y/Y
Mercedes Benz	Y/Y	Y/Y	Y/Y	Y/Y	Y/Y	Y/Y	Y/Y	Y/Y
Volkswagen/Audi	Y/Y	Y/Y	Y/Y	Y/Y	Y/Y	Y/Y	Y/Y	Y/Y
Volvo	Y/Y	Y/Y	Y/Y	Y/Y	Y/Y	Y/Y	Y/Y	Y/Y
ABS coverage (Data/Bidirectional Control)								
Chrysler	Y/Y	Y/Y	Y/Y	Y/Y	Y/Y	Y/Y	Y/Y	Y/Y
Ford	Y/Y	Y/Y	Y/Y	Y/Y	Y/N	Y/Y	Y/Y	Y/Y
GM	Y/Y	Y/Y	Y/Y	Y/Y	Y/Y	Y/Y	Y/Y	Y/Y
Honda	Y/Y	Y/Y	Y/Y	Y/Y	Y/Y	Y/Y	Y/Y	Y/Y
Hyundai	Y/Y	Y/Y	Y/Y	Y/Y	Y/Y	Y/Y	Y/Y	Y/Y
Mazda	Y/Y	Y/Y	Y/Y	Y/Y	Y/N	Y/Y	Y/Y	Y/Y
Nissan	Y/Y	Y/Y	Y/Y	Y/Y	Y/Y	Y/Y	Y/Y	Y/Y
Toyota	Y/Y	Y/Y	Y/Y	Y/Y	Y/Y	Y/Y	Y/Y	Y/Y
BMW	Y/Y	Y/Y	Y/Y	Y/Y	Y/Y	Y/Y	Y/Y	Y/Y
Mercedes Benz	Y/Y	Y/Y	Y/Y	Y/Y	Y/Y	Y/Y	Y/Y	Y/Y
Volkswagen/Audi	Y/Y	Y/Y	Y/Y	Y/Y	Y/Y	Y/Y	Y/Y	Y/Y
Volvo	Y/Y	Y/Y	Y/Y	Y/Y	Y/Y	Y/Y	Y/Y	Y/Y
SRS coverage (Data/Bidirectional Control)								
Chrysler	Y/Y	Y/Y	Y/Y	Y/Y	Y/Y	Y/Y	Y/Y	Y/Y
Ford	Y/Y	Y/Y	Y/Y	Y/Y	Y/N	Y/Y	Y/Y	Y/Y
GM	Y/Y	Y/Y	Y/Y	Y/Y	Y/Y	Y/Y	Y/Y	Y/Y
Honda	Y/Y	Y/Y	Y/Y	Y/Y	Y/Y	Y/Y	Y/Y	Y/Y
Hyundai	Y/Y	Y/Y	Y/Y	Y/Y	Y/Y	Y/Y	Y/Y	Y/Y
Mazda	Y/Y	Y/Y	Y/Y	Y/Y	Y/N	Y/Y	Y/Y	Y/Y
Nissan	Y/Y	Y/Y	Y/Y	Y/Y	Y/Y	Y/Y	Y/Y	Y/Y
Toyota	Y/Y	Y/Y	Y/Y	Y/Y	Y/Y	Y/Y	Y/Y	Y/Y
BMW	Y/Y	Y/Y	Y/Y	Y/Y	Y/Y	Y/Y	Y/Y	Y/Y
Mercedes Benz	Y/Y	Y/Y	Y/Y	Y/Y	Y/Y	Y/Y	Y/Y	Y/Y
Volkswagen/Audi	Y/Y	Y/Y	Y/Y	Y/Y	Y/Y	Y/Y	Y/Y	Y/Y
Volvo	Y/Y	Y/Y	Y/Y	Y/Y	Y/Y	Y/Y	Y/Y	Y/Y

WE SEE PERSEVERANCE, DO YOU?

GET THE CHANCE TO WIN THE **iSCAN 3**! TELL US:
WHICH REPAIR HELPED YOU GAIN THE MOST EXPERIENCE?



Circle 256 on card, or enter at "e-inquiry"
on VehicleServicePros.com

WORKING WITH EXPERTS SINCE 1989.
WE PUT THE DIRTY IN 30.

 SHARE YOUR STORY WITH US:
[AUTOLANDSCIENTECHUSA](https://www.facebook.com/AUTOLANDSCIENTECHUSA)

1999
iSCAN
[CS2000]



2007
iSCAN-II



2012
iSCANII-WT



AUTOLAND[®]
S C I E N T E C H

AUTEL MAXISYS

WORK SMARTER NOT HARDER



DIAGNOSTIC INTELLIGENCE

NEW



POWERFUL HARDWARE

- 1.3GHZ + 1.7GHZ Hexacore Processor
- 64G SSD Memory/32G Micro SD Card
- 8M Camera / 2 USB Ports

NEW



SMARTER SOFTWARE

- Bi-Directional with Advanced Coding
- Data PIDs from Vehicle Modules
- Advanced Service/Reset Diesel Emissions
- Key Programming/ADAS Identification



MAXIFIX & MAXICLOUD

Database of Repairs, Diagnostic Tips & Procedures



DATA LOGGING

Live Troubleshooting with Autel Tech Support Team

Compatible with the MP408 Oscilloscope & MaxiVideo Digital Inspection Scopes

MS908S



MS908SP

PRE-SCAN & POST-SCAN

COLLISION REPAIR READY SOFTWARE PACKAGE

Circle 257 on card, or enter at "e-inquiry" on VehicleServicePros.com



PURCHASE INCLUDES:

- Tablet Tool
- Complete Connector Kit
- Durable Carry Case
- 1-Year Software Updates
- 1-Year Warranty

WATCH NOW

AUTEL.COM
MAXITPMS.COM

HOW-TO-USE



YouTube
TRAINING
VIDEOS

@AutelTools



Phone: (855) 288-3587 • USSUPPORT@AUTEL.COM
AUTEL.COM • MAXITPMS.COM • MAXISYSADAS.COM
© 2019 Autel Intelligent Technology Corp., Ltd., All Rights Reserved



Follow Us @AutelTools
f t i YouTube

AUTEL

OBD-II ENHANCED

COMPANY NAME	AirPro Diagnostics, LLC	ALLDATA	Autel	AutoEnginuity	Autoland Scientech USA	Autologic	Bosch	CanDo International
PRODUCT NAME	AirPro	ALLDATA Diagnostics	MS906TS	Giotto ProLine SPO2	VeDiS 3+	DrivePro	ADS 625	CPro
HVAC (Data/Bidirectional Control)								
Chrysler	Y/Y	Y/Y	Y/Y	Y/Y	Y/Y	Y/Y	Y/Y	Y/Y
Ford	Y/Y	Y/Y	Y/Y	Y/Y	Y/N	Y/Y	Y/Y	Y/Y
GM	Y/Y	Y/Y	Y/Y	Y/Y	Y/Y	Y/Y	Y/Y	Y/Y
Honda	Y/Y	Y/Y	Y/Y	Y/Y	Y/Y	Y/Y	Y/Y	Y/Y
Hyundai	Y/Y	Y/Y	Y/Y	Y/Y	Y/Y	Y/Y	Y/Y	Y/Y
Mazda	Y/Y	Y/Y	Y/Y	Y/Y	Y/N	Y/Y	Y/Y	Y/Y
Nissan	Y/Y	Y/Y	Y/Y	Y/Y	Y/Y	Y/Y	Y/Y	Y/Y
Toyota	Y/Y	Y/Y	Y/Y	Y/Y	Y/Y	Y/Y	Y/Y	Y/Y
BMW	Y/Y	Y/Y	Y/Y	Y/Y	Y/Y	Y/Y	Y/Y	Y/Y
Mercedes Benz	Y/Y	Y/Y	Y/Y	Y/Y	Y/Y	Y/Y	Y/Y	Y/Y
Volkswagen/Audi	Y/Y	Y/Y	Y/Y	Y/Y	Y/Y	Y/Y	Y/Y	Y/Y
Volvo	Y/Y	Y/Y	Y/Y	Y/Y	Y/Y	Y/Y	Y/Y	Y/Y
Enhanced European Coverage (Data/Bidirectional Control)								
Alfa Romeo	Y/Y	Y/Y	Y/Y	Y/Y	Y/N	Y/Y	N/N	Y/Y
Bentley	Y/Y	Y/Y	Y/Y	Y/Y	Y/Y	Y/Y	N/N	Y/Y
Bugatti	N/N	N/N	Y/Y	N/N	N/N		N/N	
Ferrari	Y/Y	N/N	Y/Y	Y/Y	Y/Y		N/N	
Fiat	Y/Y	Y/Y	Y/Y	Y/Y	Y/N	Y/Y	Y/Y	Y/Y
Jaguar	Y/Y	Y/Y	Y/Y	Y/Y	Y/Y	Y/Y	Y/Y	Y/Y
Lotus	N/N	N/N	Y/Y	N/N	N/N		N/N	
Maserati	Y/Y	N/N	Y/Y	Y/Y	Y/Y	Y/Y	N/N	Y/Y
Maybach	Y/Y	N/N	Y/Y	Y/Y	N/N	Y/Y	N/N	Y/Y
Mini Cooper	Y/Y	Y/Y	Y/Y	Y/Y	Y/Y	Y/Y	Y/Y	Y/Y
Opel	Y/Y	Y/Y	Y/Y	Y/Y	Y/Y		N/N	Y/Y
Peugeot	N/N	Y/Y	Y/Y	N/N	Y/Y		N/N	Y/Y
Porsche	Y/Y	Y/Y	Y/Y	Y/Y	Y/Y	Y/Y	N/N	Y/Y
Range Rover	Y/Y	Y/Y	Y/Y	Y/Y	Y/Y	Y/Y	Y/Y	Y/Y
Renault	N/N	Y/Y	Y/Y	N/N	Y/N		N/N	Y/Y
Saab	N/N	Y/Y	Y/Y	N/N	Y/Y	Y/Y	Y/Y	Y/Y
Other	Audi, BMW, Land Rover,		Sprinter, Aston Martin, Lancia, Smart,Dacia, Abarth, Vauxhall, Citroen, Lamborghini, Rolls-Royce	Lamborghini, Vauxhall, Workhorse	Sprinter, Citroen, Lamborghini, Lancia, Land Rover, Renault, Skoda, Smart, Vauxhall, Rolls- Royce	Sprinter		Citroen, Abarth,Seat, Skoda,Smart, Sprinter
OBD-I Adapters (Pre-1996)								
Domestic coverage			●		●		Adapters sold separately	
Asian coverage			●	●	●		Adapters sold separately	
European coverage		●	●	●	●			
Unit Features								
Unit type	Tablet Integrated	User defined	Standalone tablet	User defined	Handheld	Tablet	Tablet, wireless VCI	Tablet
Requires separate laptop or PC		PC or tablet					For J2534 programming only	
Operating system (Windows, Android, iOS)	Windows 10 Pro	Windows 10 or Android	Android	Windows, iOS, Android	Android	Windows 10	Android	Android
Hard drive size	1TB + 5TB		32 GB	300 MB		238 GB		32 GB
Built-in memory or memory on included SD card	4-8 GB		32 GB		64 GB	4 GB	64 GB	128 GB

OBD-II ENHANCED

COMPANY NAME	AirPro Diagnostics, LLC	ALLDATA	Autel	AutoEnginuity	Autoland Scientech USA	Autologic	Bosch	CanDo International
PRODUCT NAME	AirPro	ALLDATA Diagnostics	MS906TS	Giotto ProLine SP02	VeDiS 3+	DrivePro	ADS 625	CPro
Unit Features, cont.								
Multilingual - on screen definitions in EN/SP/FR	●		●	English/Spanish	●		●	English/Spanish
Internal battery included	●		●		No	●	●	●
Length of time to fully charge unit	120 minutes		180 minutes			4 hours	180 minutes	1 hour
Length of time unit runs on one charge	8-10 hours		8-10 hours			5-6 hours	5 hours	12 hours
Unit boot-up time (from "on" button to usable screen)	10 seconds	15 seconds	20 seconds		45 seconds	1.5 minutes	45 seconds	30 seconds
High-resolution color screen	●		●	User defined	● (IPS)	●	●	●
Touchscreen interface	●	●	●	User defined	●	●	●	●
Screen size	12.3"	7" or above	8"	User defined	10.1"	11.5 "	10.1"	8"
Printable vehicle diagnostic report capabilities	●		●	●	●	●	●	●
USB port	●		●	User defined	●	●	●	●
VGA port				User defined				
HDMI port	●		●	User defined			●	●
Wireless VCI (unit-to-car capabilities)	●	●	●	●			●	●
Wi-Fi / Internet capable	●	●	●	●	●	●	●	●
Available Tool Add-Ons								
5-gas analyzer								
TPMS resets/relearns	●	●	●	●	●		●	●
TPMS programming	●	●	●	●	●		●	
Labscope capability			●					
Multimeter							Voltage display on OBDII cable	
Pre- and Post-scan reports	●	●	●		●	●	●	●
ADAS Module Identification	●		●		Limited			
Software, Website, Support & Service Features								
Manufacturers warranty	Lifetime	3 years	1 year	1 year	1 year	1 year	Lifetime	1 year
Call-in support	(904) 717-1711	800-859-3282	855-288-3587	480-827-700L	888-472-2644	877-945-6442	888-789-2602	909-226-3611
Field/Rep support	●	●	●	●	●	●	●	●
Pay-as-you-go subscription	●		●				Option on renewals	
Length of subscription	Unlimited	3 years	1 year	1 year	1 or 2 years	monthly	1 year	1 year
Updatable via the Internet	●	●	●	●	●		●	●
Frequency of updates, if applicable	Weekly	3 times per year	Weekly	Quarterly	Frequently		At least 6 per year	Monthly
Cost per update	Included with Subscription	Free	795	\$450 annually	\$699 per year	Included with subscription	\$1000 (includes repair info)	\$499
Optional repair solutions for VIN-specific fixes		●	●			●	●	
Optional diagnostic and repair procedure instructions + videos	●	●	●		●	●	●	
Includes the following repair information services:	Mitchell TechAdvisor	ALLDATA				Live support	Repair-Source, Identifix Confirmed Fixes, Code Assist, Symptom Assist	
Interfaces with the following shop management systems (list all that apply)	CCC & Mitchell		Built-in shop management	CCC, UpdatePromise				
Most Important Feature	Service utilizes live OEM software, ADAS calibrations	Seamless integration with ALLDATA	Graphical TPMS status screen	Depth and breadth of coverage	Diagnostic scanner with built-in remote pass-through capability		Repair-Source - OE repair information included in subscription	Fully loaded, bidirectional, wireless scan tool tablet for under \$1000

2019 SCAN TOOL SPEC GUIDE

	CAS of New England	FCAR Tech USA	Injectronic	Innova	Launch Tech USA	Mac Tools	MAHLE	Matco Tools	Ross-Tech	Snap-on Diagnostics	TEXA USA	Zurich
	G-Scan 3	F7SG	CJ7S	5160 CarScan Pro	Throttle	ET7200	TechPRO VDS1000	MdMAX3	VCDS Professional Kit	ZEUS	TXTs with IDC5 CAR	ZR-PRO 8" Pro Automotive Scanner
	●	●	English/Spanish	●	●	●		●			●	●
	●	●	yes		●	●		9360 mAh	User defined	●	●	●
	30 minutes	120 minutes	6 hours		5 hours	120 minutes		120 minutes	User defined	300 minutes	120 minutes	3 hours
	3 hours	8 hours	3 hours		8 hours	4 hours		6-8 hours	User defined	5 hours	8 hours	4.5 hours
	2 seconds standby, 10 seconds off	8 seconds	30 seconds	10 seconds	7 seconds	25 seconds		30 seconds	User defined	30 seconds	45 seconds	45 seconds
	●	●	●	●	●	●		●	User defined	●	●	●
	●	●	●		●	●		●	User defined	●	●	●
	10.4"	10.5"	7"	3.5"	10.1"	10.1"		10.1"	User defined	10"	12"	8"
	●	●			●	●		●	●	●	●	●
	●	●	●	●	●	●		●	●	●	●	●
	●									●		
	●	●	●			●					●	
	●	●			●	●		●	●	●	●	●
	●	●	●		●	●		●	●	●	●	●
											●	
				●		●		Activation tool req'd for some makes	●	●	●	●
						●		Activation tool req'd for some makes	●	●	●	
	Optional		●					●		●		
	●		●					●		●		
	●				●	●		●			●	●
	●					●		●			●	
	2 years	1 year	1 year	1 year	1 year	Lifetime	2 years	2 years	1 year	1 year	1 year	1 year
	877-263-4897	443-380-0088	915 208 5451	800-544-4124	877-528-6249	800-Mac-Tools	800-468-2321	877-853-3738	267-638-2300		855-200-8392	877-987-4248
	●	●		●	●	●		●		●	●	
				●			●					
	1 year	2 years		1 year	1 year	1 year		1 year	1 year	1 or 3 years	1 year	1 year
	●	●	●	●	●	●	●	●	●	●	●	●
		As needed	Quarterly	Other	Bi-weekly	2-3 months	Monthly	Weekly	As needed	Continuous	3-4 per year	Monthly
	\$995	\$600	\$250	Free	\$700			Contact local distributor	Free	Available via franchisee	\$595 (optional)	Included
		●		●	Identifix	●		MaxFix		●	●	
				●	●	●		MaxFix	Ross-Tech Wiki	●	●	
		Motor, Mitchell 1, All Data			Identifix 30 day trial	Repair Source, Wiring diagrams, Integrates with Identifix, Mitchell 1, AllData		MaxFix Optional	Ross-Tech Forum, Ross-Tech Wiki	SureTrack	TEX@info subscription	
					All cloud/web-based management systems			Web-based or Android mobile app-based services		ShopKey Pro		
	Hyundai/Kia OEM	Preloaded software from truck to equipment to car		Bidirectional testing	Easy, fast, and powerful	Enhanced bidirectional coverage with repair source info	Works with most J2534 VCI's	Ability to compare good known data samples	Bidirectional access to the latest VW/Audi vehicles	Smart data displays only relevant vehicle data parameters	Great coverage on European makes and supercars	OE-Level diagnostics at affordable price

Next Generation Diagnostics

The first full diagnostics platform
completely re-invented **for mobile**

POWER

Full coverage diagnostic on your iOS
or Android mobile device

SPEED

WIFI for greater distance and faster
throughout

COVERAGE

Full OE-level diagnostic for 58 car makers.
Now supporting 19MY

REPORTING

Pre- and Post-scan to XML, text message,
email, and PDF

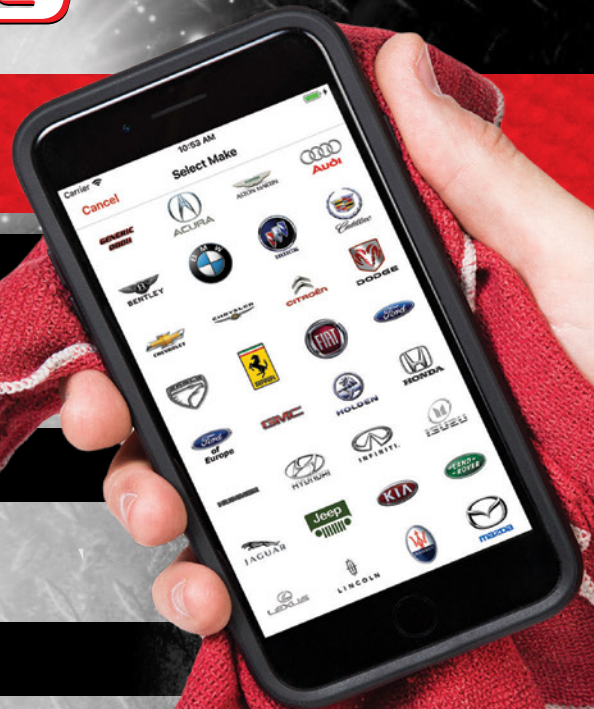
- Full DTC output (including freeze frame, event data, odometer, fault frequency, number of ignition cycles, etc.)
- Bi-directional controls and system tests (including Power Balance, Crank Learn, etc.)
- Reset adaptations and calibrations (including SAS, Yaw Rate, Zero Calibrations, and DPF Relearns, etc.)
- Annual update costs 50 -450

Circle 258 on card, or enter at "e-inquiry" on VehicleServicePros.com



480-827-TOOL (8665)

autoenginuity.com



ONE-BUTTON REGEN ON SUPPORTED VEHICLES



Introducing the NEXIQ Pocket HD™

—instant access to vital diagnostic information.

The NEXIQ Pocket HD includes everything you need to connect to almost any commercial vehicle. No vehicle communication interface is required—Pocket HD does it all for you. The scan tool comes pre-loaded with two software modules (both Light and Medium Truck 2016 (LMT) and Heavy Duty Standard). And Pocket HD gives you immediate access to critical diagnostic information, including fault information for all modules on most vehicles.

One-Button Regen

And with the addition of the HD/LMT DPF Regen software module, you can run a DPF Regeneration routine on most vehicles. You can also add NEXIQ ABS Software Suite, which includes the Bendix®, Meritor WABCO®, and Trailer ABS suites.

Note: HD/LMT DPF Regen and the NEXIQ ABS Software Suite available separately. Ability to run special tests not included.

The perfect triage tool for aftermarket diesel technicians, fleet techs, OEM dealers, owner/operators, and non-repair maintenance facilities.



Circle 259 on card, or enter at "e-inquiry" on VehicleServicePros.com

For more information, contact NEXIQ Technologies at 800-639-6774 or www.nexiq.com.

©2019 IDSC Holdings LLC. All rights reserved. NEXIQ Technologies is a registered trademark of IDSC Holdings LLC. All other marks are trademarks or registered trademarks of their respective holders. Pictures for illustration purposes only. Specifications subject to change without notice.

HEAVY DUTY

COMPANY NAME	Autel	Bosch	CanDo International	Cojali USA Inc	Diesel Laptops	FCAR Tech USA
PRODUCT NAME	MaxiSYS MS906CV	3824A	HD Pro Tab	Jaltest Diagnostics	Universal Truck Diagnostic Tool	F7SN
Price						
Under \$500						
\$501-\$2,000	●			●		
\$2,001 to \$4,500			●	●	●	●
\$4,501 to \$10,000		●		●		
More than \$10,000				●		
Enhanced/Proprietary Coverage						
Engine Modules - Heavy Duty						
Caterpillar	●	●	●	●	●	●
Cummins	●	●	●	●	●	●
Detroit Diesel	●	●	●	●	●	●
International/Navistar	●	●	●	●	●	●
Kenworth/Peterbilt (PACCAR)	●	●	●	●	●	●
Mack/Volvo	●	●	●	●	●	●
Engine Modules - Medium Duty						
Chrysler	●	●	●	●	●	●
Cummins	●	●	●	●	●	●
Ford	●	●	●	●	●	●
GM	●	●	●	●	●	●
Hino	●	●	●	●	●	●
Isuzu	●	●	●	●	●	●
International/Navistar	●	●	●	●	●	●
Mitsubishi Fuso Truck of America	●	●	●	●	●	●
Kenworth/ Peterbilt (PACCAR)	●	●	●	●	●	●
Brakes						
Bendix	●	●	●	●	●	●
Haldex	●	●	●	●	●	●
Wabco	●	●	●	●	●	●
Transmission						
Allison	●	●	●	●	●	●
Eaton	●	●	●	●	●	●
Scanning Functions						
Reads trouble codes	●	●	●	●	●	●
Displays vehicle information/VIN #	●	●	●	●	●	●
Displays heavy duty standard codes	●	●	●	●	●	●
Displays heavy duty proprietary codes	●	●	●	●	●	●
Enhanced Bidirectional Controls						
Anti-lock brake system (ABS)	●	●	●	●		●
Automatic transmissions	●	●	●	●		●
Injector cutout	●	●	●	●		●
Injector programming	●	●	●	●		●
Manual/forced regeneration	●	●	●	●	Only OBD II	●
Replace DPF/ash reset	●	●	●	●		●
SCR/DEF controls	●	●	●	●		●
Trailer brakes (ABS/EBS)	●	●	●	●		●
Calibrations for variable vane turbo	●	●	All	All		All
Live Data Stream - Digital						
Data logging	●	●		●	●	●
Guided diagnostics	●	●	●	●		●
Graphs live data on screen	●	●	●	●	●	●
Graphs multiple values on screen simultaneously	●	6	●	8	2	4
Auto identification by VIN #	●	●	●	●	●	●
Provides NOX values for diagnosis of emissions related failures	●			●	●	●

HEAVY DUTY

COMPANY NAME	Autel	Bosch	CanDo International	Cojali USA Inc	Diesel Laptops	FCAR Tech USA
PRODUCT NAME	MaxiSYS MS906CV	3824A	HD Pro Tab	Jaltest Diagnostics	Universal Truck Diagnostic Tool	F7SN
Features on Unit						
Unit type	Tablet	PC-Based, Tablet	Tablet	PC-Based, Tablet	PC-Based	Tablet
Operating system	Android	Windows 10	Android	Windows 10	Windows 10	Android
Hard drive size	32 GB	128 GB	32 GB	256 GB	128 GB	20 GB
Built-in memory or memory on included SD card	32 GB	Built-in	Expandable to 128 GB TF	8 GB	128 GB	2 GB
Multilingual - on screen definitions in English/Spanish/French	●	●	●	●	●	●
Internal battery included	32 GB	●	●	●	●	●
Length of time to fully charge unit	180 minutes	30 minutes	90 minutes	60 minutes	180 Minutes	120 minutes
Length of time unit runs on one charge	8-10 hours	4 hours	8-10 hours	11 hours	4 hours	8 hours
Unit powers off vehicle		●	●	●	●	●
Unit boot-up time (from "on" button to usable screen)	20 seconds	40 seconds	5 seconds	15 seconds	30 seconds	8 seconds
High-resolution color screen	●	●	●	●	●	●
Touch screen interface	8"	10"	10.1"	14"	●	10.5"
Print vehicle diagnostic reports capabilities	●	●	●	●	●	●
Requires separate laptop or PC (see "Unit Type")		Optional		●		
USB port	●	●	●	●	●	●
VGA port					●	
HDMI port	●	●	●	●		●
Wireless VCI (unit-to-car capabilities)	●	●	●	●		●
Wi-Fi/Internet capable	●	●	●	●	●	●
Remote diagnostics	●		●	●	●	●
Available Tool Add-Ons and Cables						
3-pin Deutsch		Add-on	●	●		
6-pin Deutsch	●	●	●	●	●	●
9-pin Deutsch (J1939 type 2)	●	●	●	●	●	●
9-pin CAT Deutsch		●	●	●	●	●
8-pin Volvo		Add-on	●	●	●	●
14-pin Volvo		Add-on	●	●	●	●
Automotive 16-pin J1962	●	●	●	●	●	●
Mack/Volvo 16-pin J1962	●	●	●	●	●	●
Labscope capability	●					
Multimeter						
OBD-II	●	Generic coverage	●	●	●	●
Software, Website, Support & Service Features						
Manufacturers warranty	1 year	1 year	1 year	1 year	1 year on laptop, 2 years on DrewLinQ	1 year
Call-in support	855-288-3587	800-533-6127	909-226-3611	305-960-7651	888-983-1975 ext. 2	443-380-0088
Field/Rep support	●	●	●	●	●	●
Pay-as-you-go subscription	●					
Length of subscription	1 year	1 year	2 years	1 year	Lifetime	2 years
Updatable via the Internet	●	●	●	●	●	●
Frequency of updates, if applicable	As needed	3 per year	Monthly	Quarterly	Quarterly	As needed
Cost per update	\$795	Annual subscription - includes 3 updates - cost \$1,500	\$1,000	Included with subscription	\$125 per year (optional)	\$600
Troubleshooting	●	Optional		●	●	●
Optional diagnostic and repair procedure instructions + videos	●	●		●	●	
Includes the following repair information services	Available on tablet with purchase of service	Available Bosch troubleshooting & repair suite with embedded repair information		Jaltest info online	DTC solutions, knowledge base, truckfaultcodes.com	Motor/Mitchell/ All Data
Most Important Feature	Advanced diagnostics and services for heavy duty vehicles	All North American HD truck coverage including bidirectional controls	Class 4-8 and off-highway in one tool	Intuitive all-makes, all models, one tool	Universal diagnostic capabilities on trucks and auto	More bidirectional functions and all truck coverage

HD **AUTEL** MAXISYS

MAXIMIZE UPTIME



DECREASE REPAIR TIME

ALL MAKES / ALL MODELS
CLASS 1 (0-6,000Lbs) - CLASS 9 (33,000Lbs)



AUTO-SCAN
ACCESS ALL MODULES IN ALL SYSTEMS



AUTO-SCAN
ACCESS ALL MODULES IN ALL SYSTEMS

MS906CV

SERVICE

ADVANCED MAINTENANCE

ALL SYSTEMS DIESEL DIAGNOSTICS
OE LEVEL FUNCTIONALITY

MS908CV

ADVANCED

BI-DIRECTIONAL FEATURES

ALL SYSTEMS DIESEL DIAGNOSTICS
ADVANCED PARAMETER SETTINGS
OE LEVEL FUNCTIONALITY

Circle 260 on card or enter at "e-inquiry" on VehicleServicePros.com

YouTube TRAINING VIDEOS @AutelTools

AUTEL TRAINING ACADEMY

<https://www.youtube.com/auteltools>



Phone: (855) 288-3587 • USSUPPORT@AUTEL.COM
AUTEL.COM • MAXITPMS.COM • MAXISYSADAS.COM
©2019 Autel Intelligent Technology Corp., Ltd., All Rights Reserved

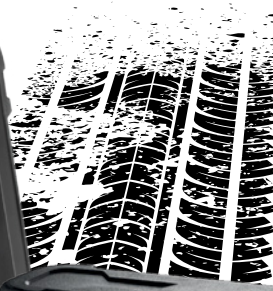


AUTEL

TEXA LEAVES NO ROOM FOR COMPROMISE

- Unparalleled diagnostic capabilities – Light, medium and heavy-duty trucks
- Optional software renewals with no skip penalties
- Unmatched technical support
- Quality hardware

AXONE Nemo HD TRUCK



Navigator TXTs



TEXA eTRUCK

- Live data stream
- Interactive bi-directionals
- Advanced parameters resets
- Test drive functions
- Remote forced regen (eTRUCK)
- Off-Highway coverage available

"I love to pay mandatory renewals for my scanner."

...said no one ever.



 Find us on
Facebook
facebook.com/texausa

TEXA USA Inc.
409 Joyce Kilmer Avenue
New Brunswick, NJ 08901
www.texausa.com
northamerica@texa.com

TEXA

Circle 261 on card or enter at "e-inquiry" on VehicleServicePros.com

COMPANY DIRECTORY

AirPro Diagnostics
airprodiagnostics.com

CAS of New England
oemtools.com

Matco Tools
matcotools.com

ALLDATA
alldata.com

Cojali USA
jaltest.com

NEXIQ Technologies
nexiq.com

Autel
autel.com

Diesel Laptops
diesellaptops.com

Noregon Systems
noregon.com

AutoEnginuity
autoenginuity.com

FCAR Tech USA
fcarusa.com

OTC, Bosch Automotive Service Solutions
otctools.com

Autoland Sciencetech
autolandsciencetech.com

Injectronic
injectronic.com

Ross-Tech
ross-tech.com

Autologic Diagnostics
autologic.com

Innova
innova.com

Snap-on Diagnostics
diagnostics.snapon.com

Automotive Test Solutions
automotivetestsolutions.com

Launch Tech USA
launchtechusa.com

TEXA USA
texausa.com

Bosch Diagnostics
boschdiagnostics.com

Mac Tools
mactools.com

TopDon
topdonusa.com

CanDo International
candointl.com

MAHLE Service Solutions
servicesolutions.mahle.com

Zurich
zurichdiagnostics.com

Can your scope do this?

Give you guidance to test over 150 vehicle components

- Connection guidance
- Help with diagnostics
- Waveform notes

PicoScope can!

Visit www.picoauto.com/A322 to view all our guided tests and download our free software

You Tube Visit our YouTube channel to watch guided test videos and more!
Search for **PicoScope Automotive**

Email: sales@picoauto.com. Errors and omissions excepted. Please contact Pico Technology for the latest prices before ordering.

pico
Technology

How to perform the test

1. Connect PicoScope Channel A to the vehicle battery terminals.
2. Connect the high amp current clamp to PicoScope Channel B and pass the wire.
3. Connect the clamp to the battery positive lead.
4. Start the engine and run at idle.
5. Switch on electrical loads (lights, heater, etc).
6. Increase the load and with the example waveform on your screen PicoScope can identify potential trouble spots for you to explore a diagnosis.
7. Start the screen to save the data.
8. Adjust the resolution on screen stop the screen.
9. Turn off the engine.
10. Use the Waveform Buffer, Zoom and Measurement tools to examine your waveform.

Note: The orientation of the current clamp relative to the wire will determine whether it has a positive or negative output. If a waveform does not appear on your screen, it appears to be beneficial to reverse the orientation of the clamp.

Circle 262 on card, or enter at "e-inquiry" on VehicleServicePros.com

Engineered and
assembled in
the USA



Bosch ADS Series

Now includes Repair-Source
with software subscription

 Repair-Source

Comprehensive OE service and repair information library includes DTC troubleshooting workflows, repair procedures, maintenance schedules, TSBs, wiring diagrams, component locations, labor times and more.

Powerful hardware and features

- ▶ Android 5.0 plus 64GB SSD for fast processing, printing and file sharing
- ▶ Ultra-crisp 7" and 10" high-resolution displays for optimum viewing in all lighting conditions
- ▶ 5MP cameras enable sharing photos and vehicle scan reports
- ▶ On ADS 625: wireless, J2534-compliant VCI and dual Wi-Fi cards for strong web and VCI connection, industry-leading full color OE system wiring diagrams

On-tool and online repair information*

Identifix database of over 30 million confirmed fixes, maintenance procedures, TSB references, key reprogramming, and more.

Lifetime Warranty**

When you have an active, unexpired diagnostics subscription.

Coverage

Full system coverage for Domestic, Asian and European vehicles, continually updated and enhanced.

No extra subscription fees

Repair-Source library, Identifix database, and more included with diagnostics subscription – over \$3,000 annual value*.



BOSCH

Invented for life

Ask your tool dealer about Bosch
Diagnostics or visit boschdiagnostics.com

Circle 263 on card, or enter at "e-inquiry"
on VehicleServicePros.com

*On-tool confirmed fix database powered by Identifix. Does not include Identifix subscription. Some assets require online access.

**Lifetime warranty applies only to tool hardware as long as owner maintains an active, unexpired diagnostics subscription.

*Based on similar annual repair information subscriptions, if purchased separately.



**MORE THAN JUST
DIAGNOSTICS**

ALL-MAKES & ALL-SYSTEMS DIAGNOSTICS | INFO ONLINE | i-PARTS ASSIST
TECHNICAL INFORMATION | CUSTOMER & TECHNICAL SUPPORT

