

# PTEN

Professional Tool & Equipment News

JUNE 2020

The Independent Tool Authority

## SCAN TOOL SPEC GUIDE 2020



A comparative list of functions and features for a large selection of aftermarket scan tools from 27 equipment manufacturers.

IN ASSOCIATION WITH THE FOLLOWING  
PTEN-AFFILIATED PUBLICATIONS:

Professional Distributor

Fleet Maintenance

SPONSORED BY:

AUTEL

BOSCH  
Invented for life

CanDo  
INTERNATIONAL, INC.

cojali  
USA

LAUNCH  
TECH USA  
CREATE • CHANGE

NEXIQ  
TECHNOLOGIES

NOREGON  
VEHICLE DATA EXPERTS

OPUS | IVS

Snap-on

TEXA

# Why Do Repair Shops Rely on *DrivePro ES*?

“I would have to be working at a dealership to get this information. I work hard to have a good reputation and with your support team I get the cars repaired correctly... Support and DrivePro are a 10.”

–Frair Motors – Atlanta, GA

- ☑ Live Support from OE Brand-Specific Master Technicians
- ☑ Licensed OE Software
- ☑ Remote Flash Programming & Calibration



**OPUS | IVS**

Powered by  
**DREW TECHNOLOGIES**

Circle 250 on card, or enter at “e-inquiry” on [VehicleServicePros.com](http://VehicleServicePros.com)

Call to schedule your demo today!

[OpusIVS.com](http://OpusIVS.com)  
[sales@OpusIVS.com](mailto:sales@OpusIVS.com)  
(844) 235-4255 (opt. 3)

**LAUNCH  
TECH USA**

CREATE • CHANGE

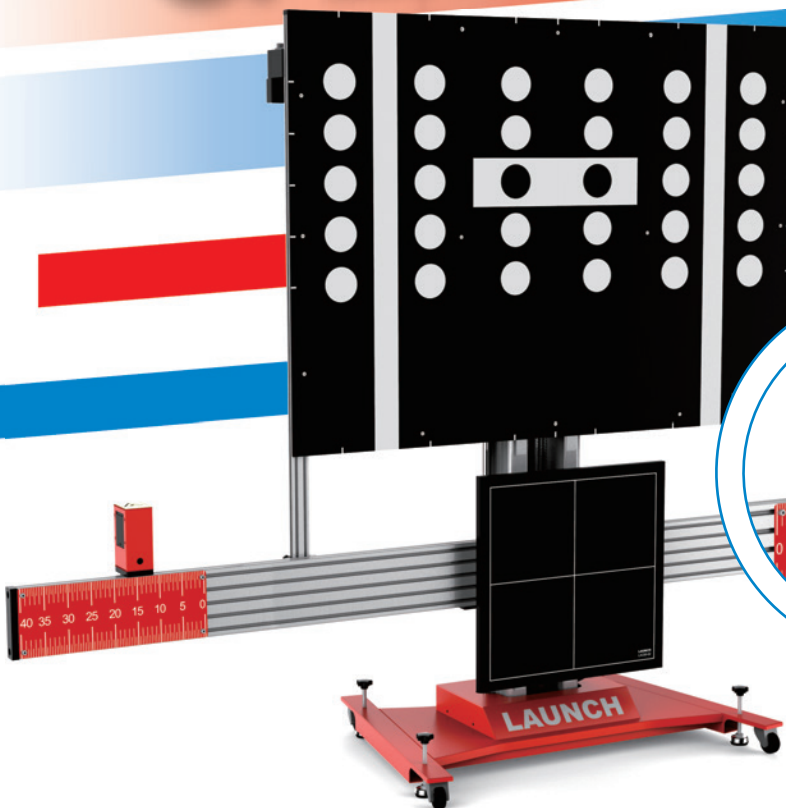
# X-431 ADAS PRO

# ENHANCE YOUR

*Accurate  
Easy-to-Use  
Affordable*

# CALIBRATION TOOL

# TO NEXT LEVEL



Rear Camera  
Front Camera  
Mirror Camera  
Surround-view Camera  
Millimeter Wave Radar



Working with X-431 Scan Tool



X-431 Throttle



X-431 PAD II AE

Circle 251 on card, or enter at "e-inquiry" on [VehicleServicePros.com](http://VehicleServicePros.com)

**LAUNCH**

[www.launchtechusa.com](http://www.launchtechusa.com)

1-877-528-6249

[@LaunchTechUSA](https://www.facebook.com/launchtechusa)



# SCAN TOOL *SPEC GUIDE* 2020

## CONTENTS

- 6** MINIMAL FUNCTION DIAGNOSTIC SCAN TOOLS
- 14** OBD-II DIAGNOSTIC SCAN TOOLS
- 24** HEAVY DUTY DIAGNOSTIC SCAN TOOLS
- 30** COMPANY DIRECTORY

**W**elcome to the 2020 Scan Tool Spec Guide, brought to you by *Professional Tool & Equipment News*, *Professional Distributor*, and *Fleet Maintenance* magazines.

Diagnostic scan tools have proven their worth in successful shops across the U.S., and they are growing in terms of intelligence right along with the fleets of sophisticated, computerized vehicles hitting repair bays. Today's scan tools are workhorses. They are often the first item a technician reaches for, acting not only as a tool, but a check point and trusty guide, helping to diagnose multiple vehicle modules and even making recommendations for the repair.

Over the years, products within the diagnostic scan tool category have increased both in number and capability. Each year these tools boast added features that help technicians execute, verify, and complete complex jobs.

This year's guide compares multiple scan tools with similar functionality. The 2020 guide consists of three sections: Minimal Function Diagnostic, OBD-II Diagnostic, and Heavy Duty Diagnostic, and features a total of 27 different scan tool manufacturers.

While OE scan tools have their place in some shops, it's important to note aftermarket scan tools have the ability to diagnose multiple vehicles with a single unit. Today's scan tools 'touch' more vehicles than ever before, and include features to offer the absolute highest level of diagnostic support.

The next several pages provide the most up-to-date product information for aftermarket scan tools available on the market today.

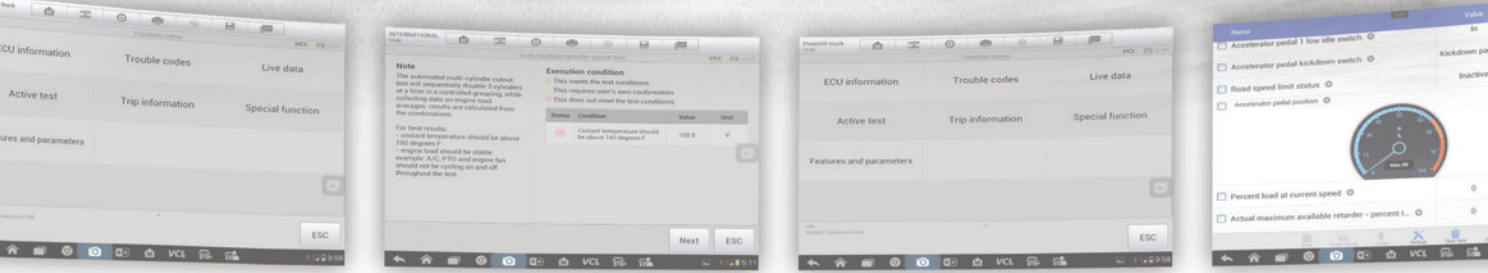
A scan tool, whether basic or advanced, is a big buy. It is also a necessity for complete vehicle maintenance and repair. Before pulling the trigger and deciding on the scan tool that is the right choice for your shop, you'll want to do your due diligence, and yes, contact the manufacturer for a full and comprehensive list of features. But we hope this guide serves as a starting point on this journey, and arms you with useful information you can use on the road ahead.

HD **AUTEL** MAXISYS

# ENHANCED SOFTWARE

NEW BI-DIRECTIONAL CONTROLS

MORE THAN 1,000 NEW DIAGNOSTIC UPDATES / OVER 20 MAKES / 80+ MODELS



**ALL MAKES / ALL MODELS**  
CLASS 1 (0-6,000LBS) - CLASS 9 (33,000LBS)

EASY INTERFACE

TROUBLE CODE ASSIST

DETAILED AUTO-SCAN

**MAXIMIZE TECHNICIAN RESOURCES**

2019 MODELS / ADAS, TPMS & TRAILER SYSTEMS / FREIGHTLINER, KENWORTH, PETERBILT & INTERNATIONAL

Circle 252 on card, or enter at "e-inquiry" on VehicleServicePros.com



Phone: (855) 288-3587 • USSUPPORT@AUTEL.COM  
AUTEL.COM • MAXITPMS.COM • MAXISYSADAS.COM  
© 2020 AUTEL U.S. INC., ALL RIGHTS RESERVED.



**AUTEL**

# MINIMAL FUNCTION DIAGNOSTIC

COMPANY	Autel	AutoEnginuity	Autoland Scientech USA	Automotive Test Solutions, Inc.	Bosch	Cojali USA	FCAR TECH USA	
<b>PRODUCT NAME</b>	MD808PRO	Giotto	iSCAN SF - Pass-Thru Kit	eSCAN ELITE	OTC 3210 CodeConnect with ABS & Airbag	Jaltest DATA LINK	F7SW CarScan	
<b>Price</b>								
Under \$500	●				●			
\$501-\$2,000		●	●	●		●	●	
\$2,001 to \$4,500								
\$4,501 to \$10,000								
Subscription (monthly cost)	Free		\$100				\$50	
Additional cost per update		\$450	Free			Free		
<b>Scanning Functions (1996 to Present)</b>								
Reads generic data and monitors (Mode 1)	●	●	●	●	●	●	●	
Displays freeze frame data (Mode 2)	●	●	●	●	●	●	●	
Reads DTCs (Mode 3)	●	●	●	●	●	●	●	
Clears all DTCs for all systems (Mode 4)	●	●	●	●	●	●	●	
Reads test results for oxygen sensors (Mode 5)	●	●	●	●	●	●	●	
Reads test results for other component/system monitoring (Mode 6)	●	●	●	●	●	●	●	
IF YES ABOVE: Provides test result definitions or raw hexadecimal data?	●	●	●	●	●	Definitions	●	
Reads pending DTCs (Mode 7)	●	●	●	●	●	●	●	
Bidirectional control (actuator tests) (Mode 8)	●	●	●		●		●	
Vehicle information - VIN # - (Mode 9)	●	●	●	●	●	●	●	
Reads permanent DTCs (Mode 0A)	●	●	●	●	●	●	●	
Inspection/reset light function	●	●	Via Remote SOD	●	●		●	
<b>Unit Features</b>								
Unit type	Handheld	PC-based	Standalone tablet	PC-based	Handheld	PC-based	Standalone Tablet	
Requires separate laptop or PC (Y or N)	N	Y	N	Y	N	Y	N	
Operating system		Windows / Android / iOS	Android	Windows	Proprietary	Windows	Android	
Multilingual - on screen definitions in English/Spanish/French	●	English/Spanish	●	English	●	●	●	
Internal battery included					●	PC-dependent	●	
Length of time to fully charge unit						PC-dependent	120 minutes	
Length of time unit runs on one charge						PC-dependent	8 hours	

# 2020 SCAN TOOL SPEC GUIDE

	Harbor Freight Tools	Injectronic	INNOVA	LAUNCH TECH USA	Mac Tools	Matco Tools	Thinkcar Tech, Inc.	TOPDON USA	XToolUSA
	Zurich ZR15 OBD2 Code Reader with Active Test/FixAssist	Cj250	5512	X431 THROTTLE	ET1510ANX MacConnect with ABS & Airbag	MDMAXFLEX	ThinkTool	ArtiLink500	Nitro LT
	●	●	●		●			●	
						● Basic	● Basic		●
				●		● Full	● Deluxe		
				\$700				Free	\$600
	●	●	●	●	●	●	●	●	●
	●	●	●	●	●	●	●	●	●
	●	●	●	●	●	●	●	●	●
	●	●	●	●	●	●	●	●	●
	●	●	●	●	●	●	●	●	●
	●	●	●	●	●	●	●	●	●
	●		Layman definitions	●	●	Pass/Fail with hexadecimal data	●	●	●
	●	●	●	●	●	●	●	●	●
	●	●	●	●	●	●	●	●	●
	●	●	●	●	●	●	●	●	●
	●		●	●	●	●	●	●	●
	●		●	●	●	●	●	●	●
	Handheld		Handheld tool with BT to mobile app	Standalone tablet	Handheld	Standalone tablet	Standalone tablet	Handheld	Standalone tablet
	N	N	N	N	N	N	N	Y (For printing reports)	N
	Proprietary		App for iOS or Android	Android	Windows	Android	Android	Embedded	Android
	●	English/Spanish	●	●	●	●	English, French, Spanish, German, Italian, Portuguese, Russian, Chinese, Japanese	●	●
	●		●	●	●	●	●		●
	Constant charge via vehicle connection		Serviceable batteries	240 minutes		2-4 hours	4 hours		90 minutes
	Constant charge via vehicle connection	Vehicle powered	72 hours	8 hours		6-8 hours	8 hours		8 hours

COMING SOON

## THE ALL NEW ADS 525X

Uncover the truth

# X marks the spot

Extreme flexibility. Extreme speed. Extreme Access.  
On the most advanced ADS yet.

### Advanced Vehicle Coverage

Fix the most vehicles with coverage and information for Domestic, Asian and European vehicles as far back as 1976.

### OEM Approved for Secure Vehicle Access

FCA certified for Secure Gateway Module (SGW) access.

### Flexible Subscriptions

Adjust your subscription for what you use most. Upgrade for enhanced repair information at any time.

### Ultra Fast Full System Scans with Quick-Scan

Complete vehicle scans in 60 seconds.

### Wireless J2534 VCI

Wireless gives you the freedom to move throughout the bay; J2534-compliant for factory programming with your OE subscription and PC.

### 8" High resolution display

Ultra crisp screen quality for easy viewing, even in bright daylight.

### Long-lasting battery life

Up to 14 hours of runtime and weeks of standby, giving you more time on tool and less time on the charger.

### Leading technology hardware and software

Offers peak performance on an expandable, future-proof platform. Powered by Android 9.

### Lifetime warranty

We've got you covered in the rare case something isn't working as it should.



SKU 3945



**BOSCH**

Invented for life

[boschdiagnostics.com](http://boschdiagnostics.com)

Circle 253 on card, or enter at "e-inquiry" on [VehicleServicePros.com](http://VehicleServicePros.com)



# EXCEED YOUR DIAGNOSTIC NEEDS

ALL THE FEATURES YOU WANT AT THE PRICE YOU DESERVE

TOP SELLING  
— ADVANCED —  
DIAGNOSTIC SYSTEM



**ADVANCED ANALYSIS**  
DIAGNOSTICS + PROGRAMMING + MAINTENANCE SERVICE

**MaxiSYS ELITE**

- Bi-Directional Control
- Advanced Coding & Adaptations
- ADAS Application Upgrade Ready
- 2YR FREE Software/2YR Warranty
- Docking/Charging Station / 2 VCIs

2848x1536 LED Touchscreen	1.8GB RAM	64GB Memory 2GB RAM
13,600mAh Lithium-polymer	8MP Camera	4.4.4 Android OS

AUTEL UPDATES PROVIDE LATEST OE-LEVEL COVERAGE FOR US/ASIAN/EUROPEAN VEHICLES (1996+) INCLUDING SUPERCARS

**HEAVY DUTY**  
BI-DIRECTIONAL DIAGNOSTICS  
+ PROGRAMMING + SERVICE



**MS908CV**

- Bi-Directional Control
- Advanced Coding & Adaptations
- Heavy Duty Class 1 - Class 9
- 1YR FREE Software/1YR Warranty
- New Deutsch 6-Pin & 9-Pin Probe Set

1024x768 LED Touchscreen	1.4GB RAM	64GB Memory 2GB RAM
11,000mAh Lithium-polymer	5MP Camera	4.0.4 Android OS

**COLLISION**  
AFFORDABLE DIAGNOSTICS  
+ COMPLETE TPMS + SERVICE



**MS906TS**

- Bi-Directional Control
- Complete TPMS Service
- Pre/PostSCAN Report Manager
- ADAS Application Upgrade Ready
- 1YR FREE Software/1YR Warranty

1024x768 LED Touchscreen	1.3GB RAM	32GB Memory 2GB RAM
10,000mAh Lithium-polymer	8MP Camera	4.4.2 Android OS

**ADAS CALIBRATION**  
BI-DIRECTIONAL DIAGNOSTICS  
+ MAINTENANCE SERVICE



**MS908S**

- Bi-Directional Control
- Advanced Coding & Adaptations
- Pre/PostSCAN Report Manager
- ADAS Application Upgrade Ready
- 1YR FREE Software/1YR Warranty

1024x768 LED Touchscreen	1.3GB RAM	64GB Memory 2GB RAM
11,000mAh Lithium-polymer	8MP Camera	4.4.2 Android OS

**KEY PROGRAM**  
IMMO + ADVANCED DIAGNOSTIC  
+ MAINTENANCE SERVICE



**IM608**

- Bi-Directional Control
- Advanced Coding/ECU Coding
- MaxiFlash JVC/ECU Programmer
- 1YR FREE Software/1YR Warranty
- XP400 Key Programmer

1920x1200 LED Touchscreen	1.3GB RAM	64GB Memory 2GB RAM
15,000mAh Lithium-polymer	8MP Camera	4.4.2 Android OS

Circle 254 on card, or enter at "e-inquiry" on VehicleServicePros.com



Phone: (855) 288-3587 • USSUPPORT@AUTEL.COM  
AUTEL.COM • MAXITPMS.COM • MAXISYSADAS.COM



# MINIMAL FUNCTION DIAGNOSTIC

COMPANY	Autel	AutoEnginuity	Autoland Scientech USA	Automotive Test Solutions, Inc.	Bosch	Cojali USA	FCAR TECH USA	
<b>PRODUCT NAME</b>	MD808PRO	Giotto	iSCAN SF - Pass-Thru Kit	eSCAN ELITE	OTC 3210 CodeConnect with ABS & Airbag	Jaltest DATA LINK	F7SW CarScan	
Unit boot-up time (from "on" button to useable screen)	10 seconds		Under 30 seconds		10 seconds	30 seconds	20 seconds	
High-resolution color screen	●		●	●	●	PC-dependent	●	
Touchscreen interface			●	User defined		PC-dependent	●	
Screen size (in inches)	4"		8"	User defined	3.5"	Auto adjust to screen	10.5"	
Print diagnostic report (via cable, Wi-Fi, PC, app)	●	●	Wi-Fi and email	●	●	PC	●	
USB port	●		●	●	●	●	●	
VGA port						PC-dependent	●	
HDMI port						PC-dependent	●	
VCI - unit-to-car capabilities (wired or wireless)		Both	Wired	●		Both	●	
Internet (Wi-Fi, ethernet, both)		●	Both	●		PC-dependent	●	
<b>Software, Website, Support &amp; Service Features</b>								
Manufacturer's warranty	1 year	1 year	1-2 years	1 year	1 year	1 year	1 year	
Call-in support	855-288-3587	480-827-8665	888-472-2644	505-265-5077	800-533-6127	800-975-1865	443-380-0088	
Field/Rep support	●	●	●		●	●	●	
Updatable via the Internet	●	●	●	●	●	●	●	
Frequency of updates, if applicable	As needed	Quarterly	Weekly	As needed		3 per year	Quarterly	
Optional repair solution database	●					●		
Supplemental repair instructions/videos			●	●		●	●	
Includes the following repair information services - e.g. Identifix, Mitchell 1, etc.					Identifix	Jaltest INFO Online & Jaltest Training	Motor Info	
Interfaces with the following shop management systems								
<b>Most Important Feature</b>	All systems code reader	OEM-level depth of coverage	Remote OE diagnostic and programming capable	Drivability tool box that makes you money	Brake, caliper EPB, and steering angle resets	RP1210 compliant with generic diagnostics software included	Reads codes; Pre- and Post- scan reports	

Harbor Freight Tools	Injectronic	INNOVA	LAUNCH TECH USA	Mac Tools	Matco Tools	Thinkcar Tech, Inc.	TOPDON USA	XToolUSA
Zurich ZR15 OBD2 Code Reader with Active Test/FixAssist	Cj250	5512	X431 THROTTLE	ET1510ANX MacConnect with ABS & Airbag	MDMAXFLEX	ThinkTool	ArtiLink500	Nitro LT
10 seconds	15 seconds	5 seconds	30 seconds	10 seconds	39 seconds	39 seconds	15 seconds	17 seconds
●	●	●	●	●	1280 x 800px	●	●	●
			●	●	●	●		●
3.5"	3"	3.5"	10.1"	3.5"	10.1"	7"	2.8"	8"
PC	●	●	●	●	●	Wi-Fi and serial port	●	●
●	●	●	●	●	●	●		●
						No, we use aviation plug		●
								●
Wired			●	●	●	Wireless		Wired
		●	●	●	●	Wi-Fi		Wi-Fi
90 days	30 days	1 year	1 year	1 year	2 years	1 year	1 year	2 years
888-866-5797	915-208-5451	800-544-4124	877-528-6249	800-MACTOOLS	877-853-3738	833-692-2766	833-629-4832	888-416-6950
		●	●	●	●	213-477-0665		●
●	●	●	●	●	●	●	●	●
Annually	Annually	Quarterly	Monthly		Monthly, as-needed, annually	Bi-annually	Annually	Weekly
●		●	●		●	●		
		●	●		●	●	●	●
Repair Solutions		Repair Solutions		Identifix	MaxFix			
					Any web-based or Android mobile app			All web-based management systems
All module check	Power-packed, easy-to-use scan tool	All system scan with OBD-II coverage	Full diagnostic for most OEMs	Brake, caliper EPB, and steering angle resets	Flexible and affordable software	Modular diagnostic tool	Supports all 10 Modes of OBD-II	Programs keys and has bidirectional capabilities

# Ten things you should know about



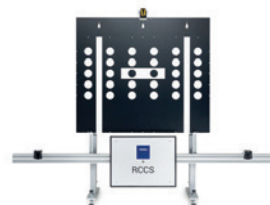
**AXONE Nemo**



**NAVIGATOR TXTs**



**eTRUCK**



**RADAR CAMERA  
CALIBRATION SYSTEM  
(RCCS2)**

# TEXA

1

TEXA was founded in 1992 by two visionary entrepreneurs who were experiencing the switch to electronic control modules in the daily activities of their automotive business.

2

The TEXA scan tools can operate on cars, motorcycles, trucks, buses, off-highway vehicles and boats.

3

TEXA USA is the youngest TEXA branch. The office takes care of all operations in the US and Canada with national and local dealers.

4

In few years TEXA has established itself as the premier player in heavy-duty diagnostics. The rugged **AXONE NEMO** tablet and the **NAVIGATOR TXTs** are an unbeatable match.

5

**eTRUCK** is a revolutionary diagnostic tool that lets technicians force a DPF regeneration being miles away from the truck reducing downtime and increasing profitability.

6

TEXA has recently introduced to North America its famous **RADAR CAMERA CALIBRATION SYSTEM (RCCS2)** and the **NAVIGATOR NANO S** offering a complete range of functionalities for all ADAS systems in the market.

7

Thanks to TEXA's relations with several OEMs its **BIKE** software and the **NAVIGATOR TXB EVOLUTION** are considered the must-have diagnostic solution for motorcycles, UTVs, ATVs and snowmobiles.

8

Why stop there? The **OFF-HIGHWAY** and **MARINE** software offer amazing diagnostic capabilities matched with troubleshooting and technical data sheets.

9

All TEXA scan tools come with a lifetime license, updates are optional with no skip penalties. Who wants to pay for expensive mandatory updates every year? No one!

10

Thanks to a solid background in the automotive business and the willingness to go above and beyond to serve its customers TEXA has proven to be the best return on investment for all shops in North America.



**NAVIGATOR  
NANO S**



**NAVIGATOR TXB  
Evolution**

TEXA USA Inc.  
409 Joyce Kilmer Avenue  
New Brunswick, NJ 08901  
[www.texausa.com](http://www.texausa.com)  
[northamerica@texa.com](mailto:northamerica@texa.com)  
+1 855.200.8392

**TEXA**

# OBD-II DIAGNOSTIC

COMPANY NAME	ALLDATA	Autel	AutoEnginuity	Autoland Scientech USA	Bosch	CanDo Diagnostics	CAS	Continental Automotive Systems	FCAR TECH USA
<b>PRODUCT NAME</b>	ALLDATA Diagnostics	MaxiSYS MS906TS	Giotto	iSCAN SF	ADS 525X	CPro	Gscan-3	Autodiagnos Pro	F7SG MasterTab
<b>Price</b>									
Under \$500	●								
\$501-\$2,000			●		●	●		● (Software/ VCI)	
\$2,001 to \$4,500		●		●			●	● (Software/ VCI/Tablet)	
\$4,501 to \$10,000									●
More than \$10,000									
Subscription (monthly cost)	\$209	\$795 Annually							\$100
Additional cost per update			\$450	\$799 Annually	\$750	\$499	\$895	\$699 Annually	
<b>Scanning Functions (1996 to Present)</b>									
Fully supports all 10 modes of OBD-II scan tool operation (Mode 1 through Mode 0A)	●	●	●	●	●	●	●	●	●
<b>Other Functions</b>									
Supports security functions through NASTF (Y or N) or stand-alone (Y or N)		N/Y	Y/Y	Y/Y	N/Y	N/Y	Y/Y	Y/Y	Y/Y
Electronic brake service	●	●	●	●	●	●	●	●	●
Steering angle/suspension service	●	●	●	●	●	●	●	●	●
Guided tests/on-screen help	●	●	●	Via remote SOD	●	●	●	●	●
Inspection/reset light function	●	●	●	●	●	●	●	●	●
J2534 reflash and pass-thru diagnostic capability**				●	●	Optional	●		
Record and play back OBD-II data		●	●	●	●	●	●	●	●
Graphs live data on screen	●	●	●	●	●	●	●	●	●
Graphs multiple PIDs on screen simultaneously	25	3	8	4	8	4	4	No limit	9
User-selectable units (SAE, metric)	●	●	●	●	●	●	●	●	●
Pre- and Post-scan reports	●	●	●	●	●	●	●	●	●
Remote diagnostic support		●	●	●		●	●		●
<b>Specific System Coverage Data and Bidirectional Controls</b>									
<b>ADAS calibration (Data/Bidirectional Control)</b>									
Chrysler (FCA)	Y/Y	Y/Y	Y/Y	Y/N	Y/Y	Y/Y	Y/Y	Y/Y	Y/Y
Ford	Y/Y	Y/Y	Y/Y	Y/N	Y/Y	Y/Y	Y/Y	Y/Y	Y/Y
GM	Y/Y	Y/Y	Y/Y	Y/Y	Y/Y	Y/Y	Y/Y	Y/Y	Y/N
Honda	Y/Y	Y/Y	Y/Y	Y/N	Y/Y	Y/Y	Y/Y	Y/Y	Y/Y
Hyundai	Y/Y	Y/Y	Y/Y	Y/N	Y/Y	Y/Y	Y/Y	Y/Y	Y/Y
Jaguar/Land Rover	Y/Y	Y/Y	Y/Y	Y/N	Y/Y	Y/Y	Y/Y	N/N	Y/Y
Mazda	Y/Y	Y/Y	Y/Y	Y/N	Y/Y	Y/Y	Y/Y	Y/Y	N/Y
Nissan	Y/Y	Y/Y	Y/Y	Y/N	Y/Y	Y/Y	Y/Y	Y/Y	Y/Y
Toyota	Y/Y	Y/Y	Y/Y	Y/Y	Y/Y	Y/Y	Y/Y	Y/Y	Y/Y
BMW/Mini Cooper	Y/Y	Y/Y	Y/Y	Y/Y	Y/Y	Y/Y	Y/Y	N/N	Y/Y
Mercedes Benz	Y/Y	Y/Y	Y/Y	Y/N	Y/Y	Y/Y	Y/Y	N/N	Y/Y
Volkswagen/Audi	Y/Y	Y/Y	Y/Y	Y/Y	Y/Y	Y/Y	Y/Y	N/N	Y/Y
Volvo	Y/Y	Y/Y	Y/Y	Y/N	Y/Y	Y/Y	Y/Y	N/N	Y/Y
<b>Body control module - BCM (Data/Bidirectional Control)</b>									
Chrysler (FCA)	Y/Y	Y/Y	Y/Y	Y/Y	Y/Y	Y/Y	Y/Y	Y/Y	Y/Y
Ford	Y/Y	Y/Y	Y/Y	Y/N	Y/Y	Y/Y	Y/Y	Y/Y	Y/Y
GM	Y/Y	Y/Y	Y/Y	Y/Y	Y/Y	Y/Y	Y/Y	Y/N	Y/N
Honda	Y/Y	Y/Y	Y/Y	Y/Y	Y/Y	Y/Y	Y/Y	Y/Y	Y/Y
Hyundai	Y/Y	Y/Y	Y/Y	Y/Y	Y/Y	Y/Y	Y/Y	Y/Y	Y/Y
Jaguar/Land Rover	Y/Y	Y/Y	Y/Y	Y/Y	Y/Y	Y/Y	Y/Y	N/N	Y/Y
Mazda	Y/Y	Y/Y	Y/Y	Y/N	Y/Y	Y/Y	Y/Y	Y/Y	N/Y

\*Requires vehicle security professional license through NASTF. \*\*OEM subscription may be required.

# 2020 SCAN TOOL SPEC GUIDE

Harbor Freight Tools	Injectronic	INNOVA	LAUNCH TECH USA	Mac Tools	Matco Tools	Opus IVS	Ross-Tech LLC	Snap-on	TEXA USA	TOPDON USA	XToolUSA
Zurich ZR-PRO Professional Automotive Scanner	CJ7s	5160RS	Millennium Master	MDT 10	MDMAX3	DrivePro ES	VCDS Professional Kit	ZEUS	TEXA IDC5 CAR	PHOENIX PRO	Nitro GT
		●	●								
	●						●				
					●				●	●	●
				●		●		●			
	\$250 after 1st year		Free	\$1,250			Free		\$595 Annually (optional)	\$895	\$600
●	●	●	●	●	●	●		●	●	●	●
N/N		N/N		N/Y	Y/Y	Y/Y	N/N	Y/Y	Y/Y	N/Y	Y/Y
●		●	●	●	●	●	●	●	●	●	●
●	●	●	●	●	●	●	●	●	●	●	●
		●	●	●	Optional	●		●	●	●	●
●		●	●	●	●	●	●	●	●	●	●
●		●	●	●	●	●	●	●	●	●	●
●	●	●	●	●	●	●	●	●	●	●	●
4	2	4	4	8	16	4	12	16	8	10	6
●		●	●	●	●	●	●	●	●	●	●
●		● (on App)	●	●	●	●	●	●	●	●	●
	●				●	●		●	●	●	●
N/N	N/N	N/N	N/N	Y/Y	Y/Y	Y/Y	N/N	Y/Y	Y/Y	N/Y	Y/Y
N/N	N/N	N/N	N/N	Y/Y	Y/Y	Y/Y	N/N	Y/Y	Y/Y	N/Y	Y/Y
N/N	N/N	N/N	N/N	Y/Y	Y/Y	Y/Y	N/N	Y/N	Y/Y	N/Y	Y/Y
N/N	N/N	N/N	N/N	Y/Y	Y/Y	Y/Y	N/N	Y/Y	Y/Y	N/Y	Y/Y
N/N	N/N	N/N	N/N	Y/Y	Y/Y	Y/Y	N/N	Y/Y	Y/Y	N/Y	Y/Y
N/N	N/N	N/N	N/N	Y/Y	Y/Y	Y/Y	N/N	Y/Y	Y/Y	N/Y	Y/Y
N/N	N/N	N/N	N/N	Y/Y	Y/Y	Y/Y	N/N	N/Y	Y/Y	N/Y	Y/Y
N/N	N/N	N/N	N/N	Y/Y	Y/Y	Y/Y	N/N	Y/Y	Y/Y	N/Y	Y/Y
N/N	N/N	N/N	N/N	Y/Y	Y/Y	Y/Y	N/N	Y/Y	Y/Y	N/Y	Y/Y
N/N	N/N	N/N	N/N	Y/Y	Y/Y	Y/Y	N/N	Y/Y	Y/Y	N/Y	Y/Y
N/N	N/N	N/N	N/N	Y/Y	Y/Y	Y/Y	N/N	Y/Y	Y/Y	N/Y	Y/Y
N/N	N/N	N/N	N/N	Y/Y	Y/Y	Y/Y	N/N	Y/Y	Y/Y	N/Y	Y/Y
N/N	N/N	N/N	N/N	Y/Y	Y/Y	Y/Y	N/N	Y/Y	Y/Y	N/Y	Y/Y
N/N	N/N	N/N	N/N	Y/Y	Y/Y	Y/Y	N/N	Y/Y	Y/Y	N/Y	Y/Y
N/N	N/N	N/N	N/N	Y/Y	Y/Y	Y/Y	N/N	Y/Y	Y/Y	N/Y	Y/Y
Y/Y	Y/Y	Y/N	N/N	Y/Y	Y/Y	Y/Y	N/N	Y/Y	Y/Y	Y/Y	Y/Y
Y/Y	Y/Y	Y/N	N/N	Y/Y	Y/Y	Y/Y	N/N	Y/Y	Y/Y	Y/Y	Y/Y
Y/Y	Y/Y	Y/N	N/N	Y/Y	Y/Y	Y/Y	N/N	Y/N	Y/Y	Y/Y	Y/Y
Y/Y	N/N	Y/N	N/N	Y/Y	Y/Y	Y/Y	N/N	Y/Y	Y/Y	Y/Y	Y/Y
Y/Y	N/N	Y/N	N/N	Y/Y	Y/Y	Y/Y	N/N	Y/Y	Y/Y	Y/Y	Y/Y
Y/Y	N/N	Y/N	N/N	Y/Y	Y/Y	Y/Y	N/N	Y/Y	Y/Y	Y/Y	Y/Y
Y/Y	N/N	Y/N	N/N	Y/Y	Y/Y	Y/Y	N/N	Y/Y	Y/Y	Y/Y	Y/Y

# OBD-II DIAGNOSTIC

COMPANY NAME	ALLDATA	Autel	AutoEnginuity	Autoland Scientech USA	Bosch	CanDo Diagnostics	CAS	Continental Automotive Systems	FCAR TECH USA
<b>PRODUCT NAME</b>	ALLDATA Diagnostics	MaxiSYS MS906TS	Giotto	iSCAN SF	ADS 525X	CPro	Gscan-3	Autodiagnos Pro	F7SG MasterTab
Nissan	Y/Y	Y/Y	Y/Y	Y/Y	Y/Y	Y/Y	Y/Y	Y/Y	Y/Y
Toyota	Y/Y	Y/Y	Y/Y	Y/Y	Y/Y	Y/Y	Y/Y	Y/Y	Y/Y
BMW/Mini Cooper	Y/Y	Y/Y	Y/Y	Y/Y	Y/Y	Y/Y	Y/Y	N/N	Y/Y
Mercedes Benz	Y/Y	Y/Y	Y/Y	Y/Y	Y/Y	Y/Y	Y/Y	N/N	Y/Y
Volkswagen/Audi	Y/Y	Y/Y	Y/Y	Y/Y	Y/Y	Y/Y	Y/Y	N/N	Y/Y
Volvo	Y/Y	Y/Y	Y/Y	Y/Y	Y/Y	Y/Y	Y/Y	N/N	Y/Y
<b>Chassis/braking system control (Data/Bidirectional Control)</b>									
Chrysler (FCA)	Y/Y	Y/Y	Y/Y	Y/Y	Y/Y	Y/Y	Y/Y	Y/Y	Y/Y
Ford	Y/Y	Y/Y	Y/Y	Y/N	Y/Y	Y/Y	Y/Y	Y/Y	Y/Y
GM	Y/Y	Y/Y	Y/Y	Y/Y	Y/Y	Y/Y	Y/Y	Y/Y	Y/N
Honda	Y/Y	Y/Y	Y/Y	Y/Y	Y/Y	Y/Y	Y/Y	Y/Y	Y/Y
Hyundai	Y/Y	Y/Y	Y/Y	Y/Y	Y/Y	Y/Y	Y/Y	Y/Y	Y/Y
Jaguar/Land Rover	Y/Y	Y/Y	Y/Y	Y/Y	Y/Y	Y/Y	Y/Y	N/N	Y/Y
Mazda	Y/Y	Y/Y	Y/Y	Y/N	Y/Y	Y/Y	Y/Y	Y/Y	N/Y
Nissan	Y/Y	Y/Y	Y/Y	Y/Y	Y/Y	Y/Y	Y/Y	Y/Y	Y/Y
Toyota	Y/Y	Y/Y	Y/Y	Y/Y	Y/Y	Y/Y	Y/Y	Y/Y	Y/Y
BMW/Mini Cooper	Y/Y	Y/Y	Y/Y	Y/Y	Y/Y	Y/Y	Y/Y	N/N	Y/Y
Mercedes Benz	Y/Y	Y/Y	Y/Y	Y/Y	Y/Y	Y/Y	Y/Y	N/N	Y/Y
Volkswagen/Audi	Y/Y	Y/Y	Y/Y	Y/Y	Y/Y	Y/Y	Y/Y	N/N	Y/Y
Volvo	Y/Y	Y/Y	Y/Y	Y/Y	Y/Y	Y/Y	Y/Y	N/N	Y/Y
<b>Powertrain control module (Data/Bidirectional Control)</b>									
Chrysler (FCA)	Y/Y	Y/Y	Y/Y	Y/Y	Y/Y	Y/Y	Y/Y	Y/Y	Y/Y
Ford	Y/Y	Y/Y	Y/Y	Y/N	Y/Y	Y/Y	Y/Y	Y/Y	Y/Y
GM	Y/Y	Y/Y	Y/Y	Y/Y	Y/Y	Y/Y	Y/Y	Y/Y	Y/N
Honda	Y/Y	Y/Y	Y/Y	Y/Y	Y/Y	Y/Y	Y/Y	Y/Y	Y/Y
Hyundai	Y/Y	Y/Y	Y/Y	Y/Y	Y/Y	Y/Y	Y/Y	Y/Y	Y/Y
Jaguar/Land Rover	Y/Y	Y/Y	Y/Y	Y/Y	Y/Y	Y/Y	Y/Y	N/N	Y/Y
Mazda	Y/Y	Y/Y	Y/Y	Y/N	Y/Y	Y/Y	Y/Y	Y/Y	N/Y
Nissan	Y/Y	Y/Y	Y/Y	Y/Y	Y/Y	Y/Y	Y/Y	Y/Y	Y/Y
Toyota	Y/Y	Y/Y	Y/Y	Y/Y	Y/Y	Y/Y	Y/Y	Y/Y	Y/Y
BMW/Mini Cooper	Y/Y	Y/Y	Y/Y	Y/Y	Y/Y	Y/Y	Y/Y	N/N	Y/Y
Mercedes Benz	Y/Y	Y/Y	Y/Y	Y/Y	Y/Y	Y/Y	Y/Y	N/N	Y/Y
Volkswagen/Audi	Y/Y	Y/Y	Y/Y	Y/Y	Y/Y	Y/Y	Y/Y	N/N	Y/Y
Volvo	Y/Y	Y/Y	Y/Y	Y/Y	Y/Y	Y/Y	Y/Y	N/N	Y/Y
<b>SRS coverage (Data/Bidirectional Control)</b>									
Chrysler (FCA)	Y/Y	Y/Y	Y/Y	Y/Y	Y/Y	Y/Y	Y/Y	Y/Y	Y/Y
Ford	Y/Y	Y/Y	Y/Y	Y/N	Y/Y	Y/Y	Y/Y	Y/Y	Y/Y
GM	Y/Y	Y/Y	Y/Y	Y/Y	Y/Y	Y/Y	Y/Y	Y/Y	Y/N
Honda	Y/Y	Y/Y	Y/Y	Y/Y	Y/Y	Y/Y	Y/Y	Y/Y	Y/Y
Hyundai	Y/Y	Y/Y	Y/Y	Y/Y	Y/Y	Y/Y	Y/Y	Y/Y	Y/Y
Jaguar/Land Rover	Y/Y	Y/Y	Y/Y	Y/Y	Y/Y	Y/Y	Y/Y	N/N	Y/Y
Mazda	Y/Y	Y/Y	Y/Y	Y/N	Y/Y	Y/Y	Y/Y	Y/Y	N/Y
Nissan	Y/Y	Y/Y	Y/Y	Y/Y	Y/Y	Y/Y	Y/Y	Y/Y	Y/Y
Toyota	Y/Y	Y/Y	Y/Y	Y/Y	Y/Y	Y/Y	Y/Y	Y/Y	Y/Y
BMW/Mini Cooper	Y/Y	Y/Y	Y/Y	Y/Y	Y/Y	Y/Y	Y/Y	N/N	Y/Y
Mercedes Benz	Y/Y	Y/Y	Y/Y	Y/Y	Y/Y	Y/Y	Y/Y	N/N	Y/Y
Volkswagen/Audi	Y/Y	Y/Y	Y/Y	Y/Y	Y/Y	Y/Y	Y/Y	N/N	Y/Y
Volvo	Y/Y	Y/Y	Y/Y	Y/Y	Y/Y	Y/Y	Y/Y	N/N	Y/Y
<b>HVAC/climate control (Data/Bidirectional Control)</b>									
Chrysler (FCA)	Y/Y	Y/Y	Y/Y	Y/Y	Y/Y	Y/Y	Y/Y	Y/Y	Y/Y
Ford	Y/Y	Y/Y	Y/Y	Y/N	Y/Y	Y/Y	Y/Y	Y/Y	Y/Y
GM	Y/Y	Y/Y	Y/Y	Y/Y	Y/Y	Y/Y	Y/Y	Y/Y	Y/N
Honda	Y/Y	Y/Y	Y/Y	Y/Y	Y/Y	Y/Y	Y/Y	Y/Y	Y/Y
Hyundai	Y/Y	Y/Y	Y/Y	Y/Y	Y/Y	Y/Y	Y/Y	Y/Y	Y/Y





# OBD-II DIAGNOSTIC

COMPANY NAME	ALLDATA	Autel	AutoEnginuity	Autoland Scientech USA	Bosch	CanDo Diagnostics	CAS	Continental Automotive Systems	FCAR TECH USA
<b>PRODUCT NAME</b>	ALLDATA Diagnostics	MaxiSYS MS906TS	Giotto	iSCAN SF	ADS 525X	CPro	Gscan-3	Autodiagnos Pro	F7SG MasterTab
Jaguar/Land Rover	Y/Y	Y/Y	Y/Y	Y/Y	Y/Y	Y/Y	Y/Y	N/N	Y/Y
Mazda	Y/Y	Y/Y	Y/Y	Y/N	Y/Y	Y/Y	Y/Y	Y/Y	N/Y
Nissan	Y/Y	Y/Y	Y/Y	Y/Y	Y/Y	Y/Y	Y/Y	Y/Y	Y/Y
Toyota	Y/Y	Y/Y	Y/Y	Y/Y	Y/Y	Y/Y	Y/Y	Y/Y	Y/Y
BMW/Mini Cooper	Y/Y	Y/Y	Y/Y	Y/Y	Y/Y	Y/Y	Y/Y	N/N	Y/Y
Mercedes Benz	Y/Y	Y/Y	Y/Y	Y/Y	Y/Y	Y/Y	Y/Y	N/N	Y/Y
Volkswagen/Audi	Y/Y	Y/Y	Y/Y	Y/Y	Y/Y	Y/Y	Y/Y	N/N	Y/Y
Volvo	Y/Y	Y/Y	Y/Y	Y/Y	Y/Y	Y/Y	Y/Y	N/N	Y/Y
<b>Exotic European Coverage (Data/Bidirectional Control)</b>									
Alfa Romeo	Y/Y	Y/Y	Y/Y	Y/N	Y/Y	Y/Y	Y/Y	N/N	Y/Y
Bentley	Y/Y	Y/Y	Y/Y	Y/Y	N/N	Y/Y	N/N	N/N	Y/Y
Bugatti	N/N	Y/Y	Y/N	N/N	N/N	Y/Y	N/N	N/N	Y/N
Ferrari	Y/Y	Y/Y	Y/Y	Y/Y	N/N	Y/Y	N/N	N/N	Y/Y
Lotus	N/N	N/N	N/N	N/N	N/N	Y/Y	N/N	N/N	Y/Y
Maserati	Y/Y	Y/Y	Y/Y	Y/Y	N/N	Y/Y	N/N	N/N	Y/Y
Maybach	N/N	Y/Y	Y/Y	N/N	N/N	Y/Y	Y/Y	N/N	N/Y
Opel	Y/Y	Y/Y	Y/Y	Y/Y	N/N	Y/Y	Y/Y	N/N	Y/Y
Peugeot	Y/Y	Y/Y	N/N	Y/Y	N/N	Y/Y	Y/Y	N/N	Y/Y
Porsche	Y/Y	Y/Y	Y/Y	Y/Y	Y/N	Y/Y	Y/Y	N/N	Y/Y
Renault	Y/Y	Y/Y	N/N	Y/N	N/N	Y/Y	Y/Y	N/N	Y/Y
Rolls-Royce	N/N	Y/Y	Y/Y	Y/Y	N/N	Y/Y	N/N	N/N	Y/Y
Saab	Y/Y	Y/Y	N/N	Y/Y	Y/N	Y/Y	N/N	N/N	Y/Y
Other (please list)		Sprinter, Aston Martin, Lancia, Smart, Dacia, Abarth, Vauxhall, Citroen	Sprinter, Aston Martin, Smart	Sprinter, Citroen, Lamborghini 2009+, Lancia, Land Rover, Skoda, Smart, Mitsubishi, Subaru, Daihatsu, Suzuki, Isuzu, Fuso Truck, Hino Truck, Isuzu Truck, UD Truck, DYNA Truck		Citroen, Abarth, Seat, Skoda, Smart, Sprinter	Hyundai Truck/ Bus, Subaru, UD Trucks, Fuso, Fiat, Daihatsu, Suzuki, Smart, Hino, Isuzu, Mitsubishi, USA Commercial trucks		Sprinter, Aston Martin, Lancia, Smart
<b>OBD-I Coverage (Pre-1996)</b>									
Domestic	●	●	●		●				●
Asian	●	●	●	●	●		Some		●
European	●	●	●	●	●		Some		●
<b>Unit Features</b>									
Unit type	User defined (PC/tablet/ smartphone)	Standalone tablet	PC-based	Standalone tablet	Standalone tablet	Standalone tablet	Standalone tablet	PC-based, standalone tablet	Standalone tablet
Requires separate laptop or PC (Y or N)	Y	N	N	N	N	N	N	Y	N
Operating system	Windows 10/ Android 6 & above	Android	Windows/ Android/iOS	Android	Android	Android	Android	Windows	Android
Storage		32 GB		64 GB	32 GB	32 GB	64 GB	128 GB	20 GB
Expandable storage		32 GB		Unlimited via external USB drive	●	Expandable to 128 GB	128 GB	MicroSDXC card reader	32 GB
Multilingual - on screen definitions in English/Spanish/French	●	●	English/ Spanish	●	●	English/ Spanish	●		●
Internal battery included	●	●			●	●	●	●	●
Length of time to fully charge unit		180 minutes			180 minutes	1 hour	60 minutes		120 minutes
Length of time unit runs on one charge		8-10 hours			14 hours	12 hours	6 hours	9 hours	8 hours
Unit boot-up time (from "on" button to usable screen)	15 seconds	20 seconds		Under 30 seconds	45 seconds	30 seconds	1/2 second		20 seconds
High-resolution color screen	●	●		●	●	●	1280 x 800px	●	●

# 2020 SCAN TOOL SPEC GUIDE

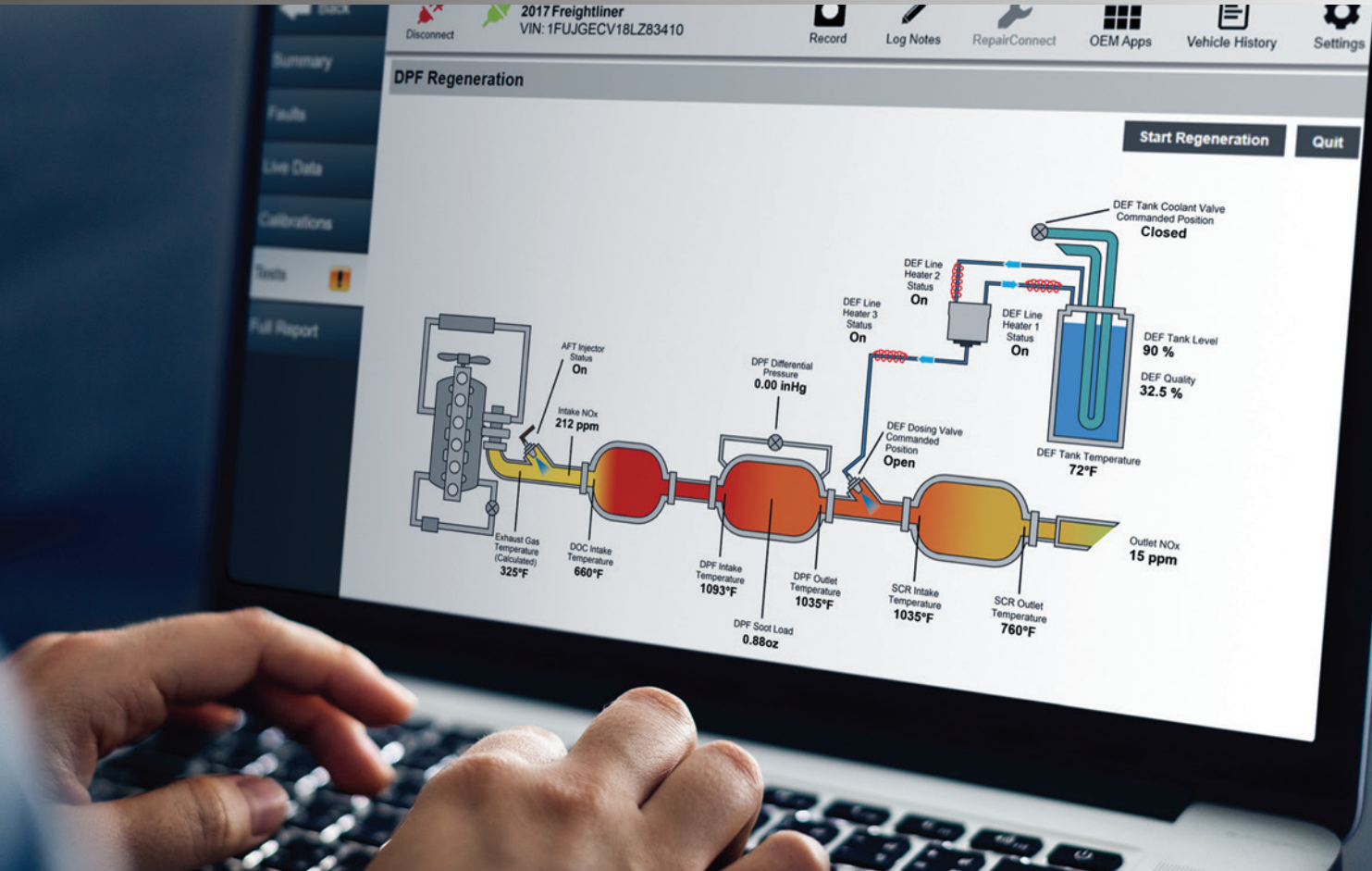
Harbor Freight Tools	Injectronic	INNOVA	LAUNCH TECH USA	Mac Tools	Matco Tools	Opus IVS	Ross-Tech LLC	Snap-on	TEXA USA	TOPDON USA	XToolUSA
Zurich ZR-PRO Professional Automotive Scanner	CJ7s	5160RS	Millennium Master	MDT 10	MDMAX3	DrivePro ES	VCDS Professional Kit	ZEUS	TEXA IDC5 CAR	PHOENIX PRO	Nitro GT
Y/Y	N/N	Y/N	N/N	Y/Y	Y/Y	Y/Y	N/N	Y/Y	Y/Y	Y/Y	Y/Y
Y/Y	N/N	Y/N	N/N	Y/Y	Y/Y	Y/Y	N/N	N/Y	Y/Y	Y/Y	Y/Y
Y/Y	Y/N	Y/N	N/N	Y/Y	Y/Y	Y/Y	N/N	Y/Y	Y/Y	Y/Y	Y/Y
Y/Y	Y/N	Y/N	N/N	Y/Y	Y/Y	Y/Y	N/N	Y/Y	Y/Y	Y/Y	Y/Y
Y/Y	N/N	Y/N	N/N	Y/Y	Y/Y	Y/Y	N/N	Y/Y	Y/Y	Y/Y	Y/Y
Y/Y	N/N	Y/N	N/N	Y/Y	Y/Y	Y/Y	N/N	Y/Y	Y/Y	Y/Y	Y/Y
Y/Y	Y/N	Y/N	N/N	Y/Y	Y/Y	Y/Y	Y/Y	Y/Y	Y/Y	Y/Y	Y/Y
Y/Y	N/N	Y/N	N/N	Y/Y	Y/Y	Y/Y	N/N	Y/Y	Y/Y	Y/Y	Y/Y
Y/Y	N/N	N/N	Y/N	Y/Y	Y/Y	Y/Y	N/N	Y/Y	Y/Y	Y/Y	Y/Y
Y/Y	N/N	N/N	Y/N	N/N	Y/Y	Y/Y	Y/Y	N/N	Y/Y	Y/Y	Y/Y
Y/Y	N/N	N/N	Y/N	N/N	Y/Y	N/N	N/N	N/Y	Y/Y	Y/Y	Y/Y
Y/Y	Y/Y	N/N	Y/N	N/N	Y/Y	N/N	N/N	Y/Y	Additional cost	Y/Y	Y/Y
Y/Y	Y/Y	N/N	Y/N	N/N	Y/Y	N/N	N/N	Y/Y	Additional cost	Y/Y	Y/Y
Y/Y	N/N	N/N	Y/N	Y/N	Y/Y	Y/Y	N/N	Y/Y	Y/Y	Y/Y	Y/Y
Y/Y	Y/Y	N/N	Y/N	N/N	Y/Y	N/N	N/N	Y/Y	Additional cost	Y/Y	Y/Y
Y/Y	N/N	N/N	Y/N	N/N	Y/Y	N/N	N/N	N/N	Y/Y	Y/Y	Y/Y
Y/Y	N/N	N/N	Y/N	Y/N	Y/Y	Y/Y	N/N	Y/Y	Y/Y	Y/Y	Y/Y
Abarth, Citroen, Dacia, Sprinter, Aston Martin, Lancia, Smart			Sprinter, Aston Martin, Lancia, Smart			Sprinter	Lamborghini	Sprinter, Aston Martin, Lancia, Smart	Sprinter, Aston Martin, Smart, Pagani, etc.		Sprinter, Aston Martin, Lancia, Smart
		Optional	●	●	●			●		●	●
		Optional	●	●	●			●		●	●
			●	●	●		●	●	●	●	●
Standalone tablet	Standalone tablet	Handheld tool with BT to mobile app	Standalone tablet	Standalone tablet	Standalone tablet	Standalone tablet	Software for PC/tablet/smartphone	Standalone Tablet	Standalone tablet	Standalone tablet	Standalone tablet
N	N	N	N	N	N	N	N	N	N	N	N
Android	Android	iOS and Android (on App)	Android	Android	Android	Windows 10	VCDS Windows, VCDS-mobile web-based	Windows	Windows 10	Android	Android
16 GB	8 GB	4 GB	1 GB	64 GB	64 GB	238 GB		64 GB	256 GB	64 GB	8 GB
	64 GB		16 GB		128 GB				●	128 GB	64 GB
●	●	●	●	●	●	●			●	●	●
●	●	●	●	●	●	●		●	●	●	●
3 hours	6 hours	Serviceable batteries	180 minutes	180 minutes	120 minutes	4 hours		300 minutes	120 minutes	180 minutes	90 minutes
4 hours	3 hours	72 hours	10 hours	5 hours	6-8 hours	5-6 Hours		5 hours	8 hours	6 hours	8 hours
45 seconds	30 seconds	5 seconds	30 seconds	45 seconds	30 seconds	< 1 minute		30 seconds	45 seconds	40 seconds	17 seconds
●	●	●	●	●	●	●		●	●	●	●

# OBD-II DIAGNOSTIC

COMPANY NAME	ALLDATA	Autel	AutoEnginuity	Autoland Scientech USA	Bosch	CanDo Diagnostics	CAS	Continental Automotive Systems	FCAR TECH USA
<b>PRODUCT NAME</b>	ALLDATA Diagnostics	MaxiSYS MS906TS	Giotto	iSCAN SF	ADS 525X	CPro	Gscan-3	Autodiagnos Pro	F7SG MasterTab
Touchscreen interface	●	●	●	●	●	●	●	●	●
Screen size	Tablets 7" & above/ smartphones 6" & above	8"		8"	8"	8"	10.1"	10"	10.5"
Print diagnostic report via (cable, Wi-Fi, PC, app)		Wi-Fi	●	Wi-Fi	●	●	●	Wi-Fi, app	●
USB port		●		●		●	●	●	●
VGA port									
HDMI port		●				●	●		●
VCI - unit-to-car capabilities (wired or wireless)	●	●	Both	Wired	Wireless	●	Wired	Both	●
Internet (Wi-Fi, ethernet, both)	●	Wi-Fi	●	Both	Wi-Fi	●	Both	Wi-Fi	●
<b>Available Tool Add-Ons</b>									
5-gas analyzer									●
TPMS resets/relearns	●	●	●		●	●			●
TPMS programming	●	●	●		●	●			●
Labscope capability		●					Optional		
Multimeter		●					Optional		●
<b>Software, Website, Support &amp; Service Features</b>									
Manufacturer's warranty	3 years for hardware	1 year	1 year	1-2 years	Lifetime	1 year	1 year	1 year	2 years
Call-in support	800-859-3282	855-288-3587	480-827-8665	888-472-2644	855-267-2483	1-909-CANDO-11	877-263-4897	800-265-1818	443-380-0088
Create support ticket on device		●		●	●		●		●
Field/Rep support		●	●	●	●	●	●		●
Updatable via the Internet	●	●	●	●	●	●	●	●	●
Frequency of updates, if applicable	Quarterly	As needed	Quarterly	Weekly	Bi-monthly	Monthly	Every 120 days	Quarterly	Quarterly
Optional repair solution database	●	●		●	●	●			●
Supplemental repair instructions/videos	●	●		●	●	●			●
Includes the following repair information services - e.g. NextStep, Mitchell 1, etc.	ALLDATA	Links to all			Repair-Source, Identifix	Motor			
Interfaces with the following shop management systems					Shopware				
<b>Most Important Feature</b>	Seamless integration with ALLDATA Repair & Collision	Bidirectional capabilities, complete TPMS service	OEM-level depth of coverage	See the complex turn simple with iSCAN	Complete coverage and repair information	Fully loaded, bidirectional and wireless scan tool	Multi-car and truck line with Hyundai/Kia OEM	OEM data, fast, intuitive, module autodetect feature	Bidirectional capabilities for most OEMs

Harbor Freight Tools	Injectronic	INNOVA	LAUNCH TECH USA	Mac Tools	Matco Tools	Opus IVS	Ross-Tech LLC	Snap-on	TEXA USA	TOPDON USA	XToolUSA
Zurich ZR-PRO Professional Automotive Scanner	CJ7s	5160RS	Millennium Master	MDT 10	MDMAX3	DrivePro ES	VCDS Professional Kit	ZEUS	TEXA IDC5 CAR	PHOENIX PRO	Nitro GT
●	●		●	●	●	●		●	●	●	●
8"	7"	3.5"	5"	10.1"	10.1"	10.1"		10"	10"	12"	10.1"
Wi-Fi		●	●	●	●	●	●	●	●	●	Wi-Fi
●	●	●	●	●	●	●	●	●	●	●	●
				●				●	●		●
	●			●				●	●	●	●
Wireless			Wired	Wireless	●		Wireless	●	●	●	Wireless
Wi-Fi	●	●	●	Wi-Fi	●	●		●	●	●	Wi-Fi
			●	●	Supports onboard procedures; activation tool required for some makes			●	●	●	●
				●	Supports onboard procedures; activation tool required for some makes			●	●		●
	●				●			●			
	●			●	●			●			
1 year	1 year	1 year	1 year	Lifetime	2 years	1 year	1 year	1 year	1 year	2 years	1 year
877-987-4248	915-208-5451	800-544-4124	877-528-6249	800-MACTOOLS	877-853-3738	877-945-6442	267-638-2300	800-424-7226	855-200-8392	833-629-4832	888-416-6950
●		● (on App)	●	●	●	●			●	●	●
		●	●	●	●	●		●	●	●	●
●	●	●	●	●	●	●	●	●	●	●	●
Monthly	Quarterly	Quarterly	Monthly	Bi-monthly	Weekly	Monthly	Bi-annually	As available	Monthly	Monthly	Weekly
		●		Included	●	●	●	●	●		
		●	●	●	●	●	●	●	●	●	●
		Repair Solutions		Repair-Source, Identifix	MaxFix	IVS 360 live brand-specific support, plus shortcut icons to Diagnostic Network, Mitchell1, All Data, and Motologic			TEX@info		
					Any web-based or Android mobile app			SE Viewer			
Affordable, comprehensive, pre-/post-repair report, bidirectional	Expansion post for adding hardware	All module scan, service resets/ initialization	Fast check tool	Complete coverage and repair information	Ability to compare good, known data samples	Live brand-specific support and remote programming services	Bidirectional access to the latest VW/Audi vehicles	Snap-on Intelligent Diagnostics provides prefiltered information	Quality solution for ADAS and advanced diagnostics	Bidirectional capabilities for more than 80 makes	Programs keys and has J2534 capabilities

# eTechnician™ 2.0



## Real-time diagnostics at your fingertips

COMPREHENSIVE COVERAGE BI-DIRECTIONAL SUPPORT CLOUD-BASED VEHICLE HISTORY REPORTS

eTechnician™ 2.0 gives you the data and support required to stay competitive in today's trucking industry. With extensive coverage for heavy, medium, and light-duty trucks, you'll have real-time diagnostics for every engine, transmission, brake, body, chassis, and more, within your fleet. Plus, we added patented Cloud-Based Vehicle History Reports that allow you to see every diagnostic session within your fleet, regardless of location. Commercial truck diagnostics on your PC has never been this good—until now.



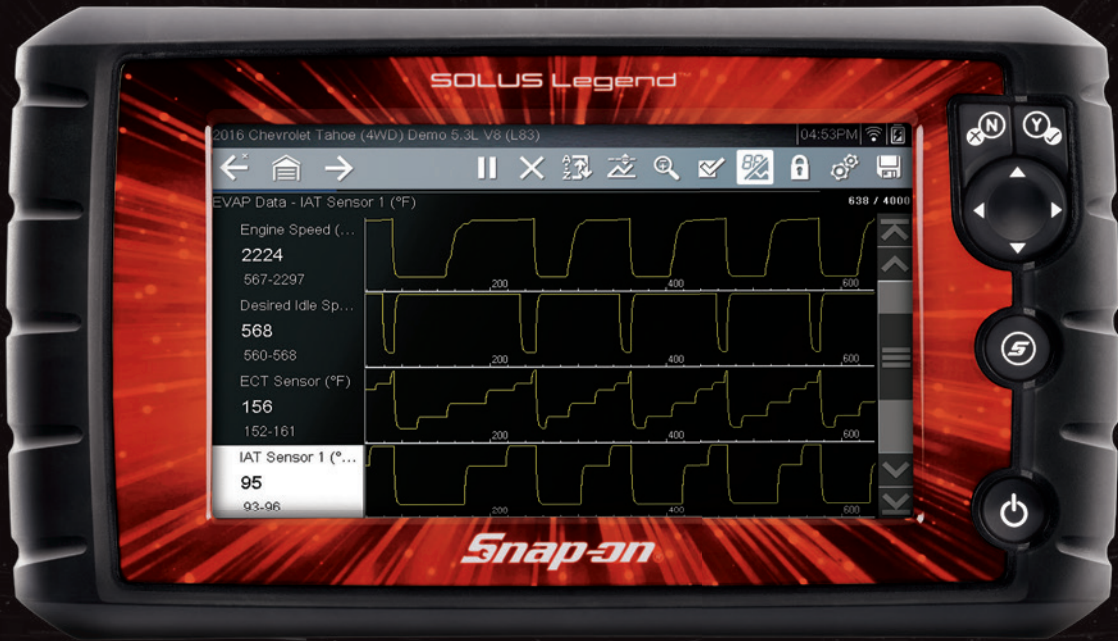
800-639-6774 nexiq.com

©2020 IDSC Holdings LLC. All rights reserved. eTechnician is a trademark of IDSC Holdings LLC. NEXIQ Technologies is a registered trademark of IDSC Holdings LLC. All other marks are trademarks or registered trademarks of their respective holders. Specifications subject to change without notice.

Circle 259 on card, or enter at "e-inquiry" on VehicleServicePros.com

# THE ALL NEW **SOLUS LEGEND™**

from Snap-on



# TWICE AS FAST

AS ANY OTHER DIAGNOSTIC TOOL IN ITS CLASS

WHO HAS TIME TO SPARE WHEN YOU HAVE TO  
**GET IT FIXED FAST... AND RIGHT**

AUTO VEHICLE ID | SURETRACK WITH REAL FIXES | FUNCTIONAL TESTS | ETHERNET VEHICLE COMMUNICATION | MOTORCYCLE COVERAGE

RESETS AND RELEARNS: TPMS | MAINTENANCE LIGHTS | STEERING ANGLE SENSORS | OIL SPECS

## **Snap-on®**

Circle 256 on card, or enter at "e-inquiry" on [VehicleServicePros.com](http://VehicleServicePros.com)

# HEAVY DUTY DIAGNOSTIC

COMPANY NAME	AirPro Diagnostics	Autel	Bosch	CanDo Diagnostics	Cojali USA	FCAR TECH USA
<b>PRODUCT NAME</b>	AirPro	MaxiSYS MS906CV	ESI Truck	HD Pro Tab	Jaltest CV	F7SN TruckTabPro
<b>Price</b>						
Under \$500						
\$501-\$2,000		●				
\$2,001 to \$4,500						●
\$4,501 to \$10,000	●		●	●	●	
More than \$10,000						
Subscription (monthly cost)		\$795 Annually				\$80
Additional cost per update			\$1,200	\$1,000 Annual	\$1,325 (Included first year, this is renewal.)	
<b>Enhanced/Proprietary Coverage</b>						
<b>Engine Modules - Heavy Duty</b>						
Caterpillar	●	●	●	●	●	●
Cummins	●	●	●	●	●	●
Detroit Diesel	●	●	●	●	●	●
International/Navistar	●	●	●	●	●	●
Kenworth/Peterbilt (PACCAR)	●	●	●	●	●	●
Mack/Volvo	●	●	●	●	●	●
<b>Engine Modules - Medium Duty</b>						
Chrysler	●	●	●	●		●
Cummins	●	●	●	●	●	●
Ford	●	●	●	●	●	●
GM	●	●	●	●	●	●
Hino	●	●	●	●	●	●
Isuzu	●	●	●	●	●	●
International/Navistar	●	●	●	●	●	●
Mitsubishi Fuso Truck of America	●	●	●	●	●	●
Kenworth/ Peterbilt (PACCAR)	●	●	●	●	●	●
<b>Brakes</b>						
Bendix	●	●	●	●	●	●
Haldex	●	●	●	●	●	●
Wabco	●	●	●	●	●	●
<b>Transmission</b>						
Allison	●	●	●	●	●	●
Eaton	●	●	●	●	●	●
<b>Scanning Functions</b>						
Reads trouble codes	●	●	●	●	●	●
Displays vehicle information/VIN #	●	●	●	●	●	●
Displays heavy duty standard codes	●	●	●	●	●	●
Displays heavy duty proprietary codes	●	●	●	●	●	●
<b>Enhanced Bidirectional Controls</b>						
Anti-lock brake system (ABS)	●	●	●	●	●	●
Automatic transmissions	●	●	●	●	●	●
Injector cutout	●	●	●	●	●	●
Injector programming	●	●	●	●	●	●
Manual/forced regeneration Y/N	●	●	Y	●	●	●
Replace DPF/ash reset	●	●	●	●	●	●
SCR/DEF controls	●	●	●	●	●	●
Trailer brakes (ABS/EBS)	●	●	●	●	●	●
Calibrations for variable vane turbo (Choose all that apply: Cummins, Detroit Diesel, International/Navistar, PACCAR, Mack/Volvo) or ALL	All	All	All	All	All	All
<b>Live Data Stream - Digital</b>						
Data logging	●	●	●	●	●	●
Guided diagnostics	●	●	●	●	●	●



# 2020 SCAN TOOL SPEC GUIDE

LAUNCH TECH USA	Mac Tools	Matco Tools	NEXIQ	Noregon	Snap-on	TEXA USA
X431 ADD ON Module	ET8250-HD	MDMAX3HD	eTechnician	JPRO Professional	PRO-LINK Edge	AXONE NEMO - IDC5 TRUCK
				Software Renewal		
●			●	Software + Adapter Kit	● Basic	
		●		Full kit (incl. laptop)	● Enhanced	●
	●				● Deluxe	
\$1,196	\$1,900		\$2,200	Free for active subscribers	\$300 to \$600 average	\$795 Annually (optional)
●	●	●	●	●	●	●
●	●	●	●	●	●	●
●	●	●	●	●	●	●
●	●	●	●	●	●	●
●	●	●	●	●	●	●
●	●	●	●	●	●	●
●	●	●	●	●	●	●
●	●	●	●	●	●	●
●	●	●	●	●	●	●
●	●	●	●	●	●	●
●	●	●	●	●	●	●
●	●	●	●	●	●	●
●	●	●	●	●	●	●
●	●	●	●	●	●	●
●	●	●	●	●	●	●
●	●	●	●	●	●	●
●	●	●	●	●	●	●
●	●	●	●	●	●	●
●	●	●	●	●	●	●
●	●	●	●	●	●	●
●	●	●	●	●	●	●
●	●	●	●	●	●	●
●	●	●	●	●	●	●
●	●	●	●	●	●	●
●	●	●	●	●	●	●
●	●	●	●	●	●	●
●	●	●	●	●	●	●
●	●	●	●	●	●	●
●	Y	●	Y	●	Y	●
●	●	●	●	●	●	●
●	●	●	●	●	●	●
●	●	●	●	●	●	●
All	All	All	All	Cummins	All	All
●	●	●	●	●	●	●
●	●	Add-on	●	●	With Repair>Connect	●

# PPTEN

ONLINE RESOURCES AVAILABLE 24/7

***TOOLS***

***TECH TIPS***

***EQUIPMENT***

***DEMO VIDEOS***

**VEHICLE SERVICE PROS**.com



# MAXIMIZE UPTIME

## UPGRADE YOUR REPAIR PROCESS.



Pair JPRO® Professional with NextStep® Repair for the most comprehensive diagnostic and repair tool available today. JPRO gives technicians the tools to thoroughly diagnose and troubleshoot vehicle issues and NextStep Repair's step-by-step instructions remove the guesswork from repair work. Let JPRO with NextStep improve your shop efficiency to maximize uptime.



Learn More: [www.noregon.com](http://www.noregon.com)

For Available Discounts CALL: (855) 889-5776

Circle 257 on card or enter at "e-inquiry" on [VehicleServicePros.com](http://VehicleServicePros.com)

©2020 Noregon. JPRO and NextStep are registered trademarks of Noregon. All Rights Reserved.

# HEAVY DUTY DIAGNOSTIC

COMPANY NAME	AirPro Diagnostics	Autel	Bosch	CanDo Diagnostics	Cojali USA	FCAR TECH USA
<b>PRODUCT NAME</b>	AirPro	MaxiSYS MS906CV	ESI Truck	HD Pro Tab	Jaltest CV	F7SN TruckTabPro
Graphs live data on screen	●	●	●	●	●	●
Graphs multiple values on screen simultaneously (list how many)	7	3	6	8	16	7
Auto identification by VIN #	●	●	●	●	●	●
Provides NOX values for diagnosis of emissions related failures	●	●	●		●	●
<b>Unit Features</b>						
Unit type	Integrated Dell Latitude Tablet	Standalone tablet	Standalone tablet or PC-based	Standalone tablet	PC-based	Standalone tablet
Requires separate laptop or PC (Y or N)	N	N	N	N	Y	N
Operating system	Windows 10 Pro	Android	Windows 10	Android	Windows	Android
Storage	512 GB NVMe SSD	32 GB	128 GB	32 GB	10 GB	20 GB
Expandable storage	Micro SD 4.0 up to 128 GB	32 GB	●	Expandable to 128 GB	PC-dependent	●
Multilingual definitions in English/Spanish/French	●	●	●	●	●	●
Internal battery included	●	●	●	●	PC-dependent	●
Length of time to fully charge unit	141 minutes	180 minutes	30 minutes	90 minutes		120 minutes
Length of time unit runs on one charge	8 hours	8-10 hours	4 hours	8-10 hours		8 hours
Unit powers off vehicle			●	●	●	●
Unit boot-up time (from "on" button to usable screen)	30 seconds	20 seconds	40 seconds	5 seconds	30 seconds	20 seconds
High-resolution color screen	●	●	●	●	PC-dependent	●
Touchscreen interface	●	●	●	●	PC-dependent	●
Screen size	12.3"	8"	10"	10.1"	Auto adjust to screen	10.5"
Print diagnostic report via (cable, Wi-Fi, PC, app)	Email PDF Report	●	Wi-Fi	Wi-Fi	PC	Wi-Fi
USB port	●	●	●	●	●	●
VGA port				●	PC-dependent	
HDMI port	●	●	●	●	PC-dependent	●
VCI - unit-to-car capabilities (wired or wireless)	Wired	●	Both	Wireless	Both	Wireless
Internet (Wi-Fi, ethernet, both)	Both	●	Both	Both	PC-dependent	Both
Remote diagnostic support	●	●	●	●	●	●
<b>Available Tool Add-Ons and Cables</b>						
3-pin Deutsch	●		Add-on	●	●	
6-pin Deutsch	●	●	●	●	●	●
9-pin Deutsch (J1939 type 2)	●	●	●	●	●	●
9-pin CAT Deutsch	●		●	●	●	●
8-pin Volvo	●		Add-on	●	●	●
14-pin Volvo	●		Add-on	●	●	●
Automotive 16-pin J1962	●	●	●	●	●	●
Mack/Volvo 16-pin J1962	●	●	●	●	●	●
Labscope capability	●	●			●	
Multimeter	●				●	●
OBD-II	●	●	●	●	●	●
<b>Software, Website, Support &amp; Service Features</b>						
Manufacturer's warranty	Lifetime "EverGreen"	1 year	1 year	2 years	1 year	1 year
Call-in support	(904)-717-1711	855-288-3587	1-855-267-2483	1-909-CANDO-11	1-800-975-1865	443-380-0088
Create support ticket on device		●	●		●	●
Field/Rep support	●	●	●	●	●	●
Updatable via the Internet	●	●	●	●	●	●
Frequency of updates, if applicable	Weekly	As needed	3 per year	Monthly	Annually	Quarterly
Optional repair solution database		●	●	●	●	●
Supplemental repair instructions/videos	Instructional PDF Reports	●		●	●	●
Includes the following repair information services - e.g. NextStep, Mitchell 1, etc.	CCC	Available on tablet with purchase of service	Optional - Bosch troubleshooting	Motor FleetCross	Jaltest INFO Online & Jaltest Training	Motor Info
<b>Most Important Feature</b>	24/7 live support	Advanced diagnostics and services for heavy duty vehicles	Advanced diagnostics for trucks and off-highway vehicles	Classes 4-8 and off-highway all-in-one tool	Diagnostics and technical data integrated on one platform	Bidirectional control with most HD OEMs

# 2020 SCAN TOOL SPEC GUIDE

LAUNCH TECH USA	Mac Tools	Matco Tools	NEXIQ	Noregon	Snap-on	TEXA USA
X431 ADD ON Module	ET8250-HD	MDMAX3HD	eTechnician	JPRO Professional	PRO-LINK Edge	AXONE NEMO - IDC5 TRUCK
●	●	●	●	●	●	●
8	6	16	10	7+ across multiple ECUs	10	8
●	●	●	●	●	●	●
●	●	●	●	●	●	●
Separate tablet/smartphone, work together with Launch scanner Throttle	Standalone tablet	Standalone tablet	PC-based	PC or standalone tablet	Handheld	Standalone tablet
Y	N	N	Y	N	N	N
Android	Windows 10	Android	Windows 10	Windows 10	Windows Mobile	Windows 10
4 GB+64 GB (Throttle)	128 GB	64 GB	PC-dependent	64 GB	8 GB	256 GB
●	●	128 GB	PC-dependent	●	●	●
●	●	●	English	●	English	●
●	●	●	PC-dependent	●	●	●
240 minutes	30 minutes	119 minutes	PC-dependent	90 minutes	90 minutes	120 minutes
8 hours	4 hours	6-8 hours	PC-dependent	7 hours	10 hours	8 hours
●	●	●	●	●	●	●
30 seconds	40 seconds	30 seconds	PC-dependent	35 seconds	15 seconds	45 seconds
●	●	1920 x 1200px	PC-dependent	●	●	●
●	●	●	PC-dependent	●	●	●
10.1"	10"	10.1"	PC-dependent	9"	10.1"	12"
Wi-Fi	Wi-Fi	●	PC-dependent	Wi-Fi	Wi-Fi, cable	●
●	●	●	PC-dependent	●	●	●
●	●	●	PC-dependent	●	●	●
●	●	●	PC-dependent	●	●	●
Wireless	Both	●	Both	Wired	Wired	●
Both	Both	●	PC-dependent	Both	Wi-Fi	●
●	●	●	●	●	●	●
●	Add-on	●	●	●	●	●
●	●	●	●	●	●	●
●	●	●	●	●	●	●
●	●	●	●	●	●	●
●	Add-on	●	●	●	●	●
●	Add-on	●	●	●	●	●
●	●	●	●	●	●	●
●	●	●	●	●	●	●
●	●	●	●	●	●	●
●	●	●	●	●	●	●
●	●	●	●	●	●	●
1 year	1 year	2 years	90 days	3 years-laptop/1 year-adapter	1 year	1 year
1-877-528-6249	1-800-MACTOOLS	1-877-853-3738	800-639-6774	855-889-5776	1-800-311-5452	1-855-200-8392
●	●	●	●	●	●	●
●	●	●	●	●	●	●
●	●	●	●	●	●	●
Monthly	3 per year	Weekly	Annually	3+ times annually	Bi-annually	Monthly
●	●	●	●	●	●	●
●	●	●	●	●	●	●
●	Optional	MaxFix	Mitchell 1	NextStep Repair	Mitchell 1	TEX@info
Comprehensive heavy duty coverage	Advanced diagnostics for trucks and off-highway vehicles	Regen capabilities with today's most common trucks	All makes, all models	American-made all makes/models diagnostic solution	Comprehensive handheld	Tough hardware, remote regenerations, off-highway/car coverage available

# COMPANY DIRECTORY

**AirPro Diagnostics**  
airprodiagnostics.com

**ALLDATA**  
alldata.com

**Autel**  
autel.com

**AutoEnginuity**  
autoenginuity.com

**Autoland Sciencetech**  
autolandsciencetechusa.com

**Automotive Test Solutions**  
automotivetestsolutions.com

**Bosch Diagnostics**  
boschdiagnostics.com

**CanDo International**  
candointl.com

**CAS of New England**  
oemtools.com

**Cojali USA**  
jaltest.com

**Continental Automotive Systems**  
AutoDiagnosPro.com

**FCAR Tech USA**  
fcarusa.com

**Harbor Freight Tools**  
harborfreight.com

**Injectronic**  
injectronictech.com

**Innova**  
innova.com

**Launch Tech USA**  
launchtechusa.com

**Mac Tools**  
mactools.com

**Matco Tools**  
matcotools.com

**NEXIQ**  
nexiq.com

**Noregon Systems**  
noregon.com

**Opus | IVS**  
opusivs.com

**Ross-Tech**  
ross-tech.com

**Snap-on Diagnostics**  
diagnostics.snapon.com

**TEXA USA**  
texausa.com

**Thinkcar Tech, Inc.**  
mythinkcar.com

**TOPDON USA**  
topdonusa.com

**XToolUSA**  
xtoolusa.com

## ASK US ABOUT ADDING **MOTOR FLEETCROSS** TODAY!

CanDo Diagnostics Inc. is pleased to announce that we are now offering Motor's Fleetcross Service! SCAN THE QR CODE BELOW FOR MORE INFORMATION!

Introducing the **HD Pro Tab**: an open Android, Bluetooth® wireless scan tool for Heavy Duty Truck and Agricultural & Industrial applications. **HD Pro Tab** is three years in the making, with software developed at the dealership level. This means OE-level functionality without the costly subscription. Coverage for F150, Freightliner and Farming Equipment - and everything in between - **all in one package.**



- Full Commercial Vehicle & Off-highway Equipment Coverage
- Full Brake & Transmission Coverage
- Set Parameters
- Full DPF Reset/Regen
- Full Bi-directional Controls
- Injector Coding
- Cylinder Cutout
- Auto-ID all modules
- One easy-to-use Interface
- True IP65 Drop Test & Water Resistant Rating
- 10.1" IPS High-Res Screen
- Full Suite of Connectors (inc. CAT-9 and Benz Truck)
- 2 Years FREE Software



**CanDo**  
INTERNATIONAL, INC.

www.candointl.com • 909-Cando-11 (226-3611)



**HD MOBILE now with Mack & Volvo!**

Circle 258 on card, or enter at "e-inquiry" on VehicleServicePros.com

NEW **P**TEN PODCAST



 LISTEN NOW

Tech Tips, Industry News, Case Studies, Tool Info, & more!

Hosted by Scott Brown



# New Link V9 RELEASE New Software 20.1

— AVAILABLE NOW —

WORK FOR YOURSELF, NOT BY YOURSELF!  
Solve every problem with **JALTEST DIAGNOSTICS**

