

April 2022

Tools & Shop Equipment

*Special manager &
technician supplement*



PRODUCTS TO USE IN THE BAY

The latest tools, equipment, and storage
solutions to improve fleet service efficiency.

Supplement brought to you by

FleetMaintenance

ONE TOOL TO SCAN THEM ALL!



A NEW OFFER FROM **TEXA**

Introducing a *new* package designed for fleets and shops working on a variety of vehicles. Using the Axone Nemo 2 and the Navigator TXT you're free to scan heavy, medium, and light duty trucks, cars, bikes, diesel pickups, agriculture vehicles, construction vehicles, generators, ATV's, UTV's, side by sides, snowmobiles and more!



SCAN ME

Scan to Find
a Distributor

SOCIALS



TEXA USA inc.
409 Joyce Kilmer Ave,
New Brunswick, NJ, 08901
www.texausa.com
northamerica@texa.com
+1 855.200.8392

FleetMaintenance.com/inquire

TEXA

NEW

FASTEST 18V CORDLESS TIRE INFLATOR



The MILWAUKEE® M18™ Inflator delivers fast, accurate, easy inflation with the portability to take anywhere and is optimized for passenger, light truck and other medium duty tires. Delivering a max rating of 150 PSI, the high efficiency motor tops-off 33" light truck tires in under 1 minute. TRUEFILL™ Technology features an Auto-Pressure check that waits for the pressure to stabilize, checks the system pressure and fills until desired target is reached. In addition, an Auto Shut-Off feature will stop inflation at selected PSI to prevent over-inflation. The M18™ Inflator includes 4 PSI memory slots, anti-vibration feet, a 36" inch hose with an all-brass Schrader chuck and an on-board hose and nozzle storage.

M18™ Inflator
2848-20

LEARN MORE



or visit <https://qr.mke.tt/2Khje>

FleetMaintenance.com/inquire

M18

**PERFORMANCE DRIVEN
TRADE FOCUSED
SYSTEM WIDE**



Placing the right pieces in the maintenance puzzle

Finding skilled shop technicians is the first piece. Getting them the right tools and equipment helps the rest fall into place.

By Tyler Fussner

Maintaining commercial vehicles takes a lot of work. It also takes more than a staff of qualified technicians to get the job done and the vehicles back on the road. Supplying them and their service bays with the right tools and equipment will make it easier to increase efficiency, throughput, and uptime.

The goal of our annual Tools & Shop Equipment Supplement, which offers a plethora of the latest in vehicle maintenance tools, technology, and equipment, is to make finding the tools that fit your operation easier. You may even discover that last missing piece to solve your current efficiency challenges.

In this supplement, you'll find five distinct categories of tools and equipment, each with a range of products and purchasing considerations:

Diagnostic

With the industry continually advancing in electrification, the rise in sensor adoption, and digital connectivity, little work can be done on today's vehicles with a wrench alone. Whether looking for tire pressure monitoring system readers, bidirectional scan tools, or electrical troubleshooting equipment, this section has it covered.

Power

Power tools are a tech's best friend. And when it comes to this category of products, personal preferences play a big role. Seeking the freedom provided by battery-powered drills? Feel the need to speed up the manual process of torquing bits? You'll find answers here.

Hand & Specialty

From personal lighting options to innovative, job-specific problem solvers, this section features a range of products that can remedy a technician's in-bay needs.

Shop Equipment

Whether looking to equip the shop to take on and provide new services, update outdated pieces, or further furnish the floor, Shop Equipment covers the big pieces of the maintenance puzzle.

Tool Storage

Avoid safety hazards and boost efficiency with storage solutions that ensure technicians have the right tools within reach to complete the task at hand, and all without taking up a large footprint.

Tool Reviews

We can share the latest product details and specs from the top brands in the industry, but their true worth is proven by the techs who use them every day.

That's why we included several reviews from your industry peers who have tested how these tools and equipment stand up to the rigors of commercial vehicle maintenance.

For example, Chris Groff, a technician who reviewed the Autel BT608 battery and electrical system analyzer (p. 12) "was able to quickly verify failed alternator diodes in a late model Freightliner truck" and also confirm he could salvage the discharged batteries.

Shop owner John Baumgardt III affirmed the AIRCAT 115 degree Angle Die Grinder (p. 18) can "get into awkward spots," which saves the shop time and allows him to move to the next job faster, and get trucks on the road faster.

Technical instructor Rich Falco noted the KNIPEX TwinGrip Slip Joint Pliers (p. 22) do the job of several different pliers, saving him "some time by not having to go back to my toolbox."

We hope these aid you in your search. And if you have a tool or piece of shop equipment you want to review, please feel free to reach out to us at: Editor@FleetMaintenance.com.

Inside

6 Diagnostic Tools

- Purchasing considerations
- Products
- Diagnostic tool reviews

14 Power Tools

- Purchasing considerations
- Products
- Power tool reviews

20 Hand & Specialty Tools

- Purchasing considerations
- Products
- Hand and specialty tool reviews

24 Shop Equipment

- Purchasing considerations
- Products
- Shop equipment reviews

29 Tool Storage

- Purchasing considerations
- Products

Brought to you by

FleetMaintenance

Visit our official website
FleetMaintenance.com



Join the conversation:

**Facebook.com/
FleetMaintenanceMag**



Follow us on

Twitter.com/fleetMx



Connect with us

**LinkedIn.com/
company/fm-mag**

Cover photo provided by Rotary Lift



MAINTENANCE SIMPLIFIED.

Fill up your virtual toolbox with Noregon's suite of diagnostic and repair solutions.

Whether you're looking to simplify diagnostics, add interactive maintenance guides, or get remote assistance from top technicians in the industry, ***we have you covered from intake to completed repair.***



VIEW COVERAGE



LEARN MORE



Learn more: www.noregon.com

For available discounts call: (855) 889-5776

FleetMaintenance.com/inquire

©2022 Noregon Systems, LLC. JPRO and NextStep are registered trademarks of Noregon Systems, LLC. All Rights Reserved.



Diagnostic Tool Purchase Considerations

- ✓ Will the tool be used for one vehicle brand or for a range of vehicle makes?
- ✓ Method and frequency of software updates
- ✓ How detailed do you want the information to be?
- ✓ Ease of use
- ✓ Tablet, handheld, or PC-based tool
- ✓ Physical shape and size
- ✓ Touchscreen and screen size
- ✓ Onboard memory capacity
- ✓ Wireless versus cables
- ✓ Functionality/capabilities
- ✓ Expandability/upgradeability
- ✓ Quality
- ✓ Durability
- ✓ Warranty
- ✓ Training resources
- ✓ Technical support
- ✓ Brand reputation
- ✓ Budget range/price



Works with almost any digital multimeter

The **Electronic Specialties LOADpro and Back Probe Kit**, No. 187, is designed to help technicians diagnose electrical problems. The kit includes LOADpro test leads, tip adapters, flexible silicon back probes, spoon probe curved back probes, large crocodile clips, and push-on alligator clips. The test leads allow users to load the circuit to see if current can flow and works with almost any digital multimeter. LOADpro is able to find high corrosive resistance, shorts to ground, and open circuits by reading the voltage.

For more information visit
FleetMaintenance.com/21253849



Offers coverage on all commercial vehicles

TEXA USA's updated version of its diagnostic tablet for commercial vehicles, the **AXONE NEMO 2**, is now sold with the Navigator TXTs. The updated solution was engineered according to military standards (MIL-STD 810G), has a magnesium casing, and a gorilla glass high resolution screen. A more powerful internal processor makes the software navigation extremely smooth. TEXA offers coverage on all commercial vehicles, from diesel pickups and vans up to heavy-duty trucks. Technical information and wiring diagrams are included, while software updates are optional.

For more information visit
FleetMaintenance.com/21151562



Entry-level truck tool can service Classes 4-8

The **Launch Tech Millennium HD Lite** is an entry-level truck tool that can also be used as a simple passenger car code reader for low budget needs. It supports heavy-duty E/OBD and HDOBD J1587, J1939, and J1708 as well as reads and erases DTCs of light-, medium-, and heavy-duty vehicles (Classes 4-8). The tool also supports 10 OBD-II test modes of passenger cars and light-duty vehicles from 1996 and newer. It has shortcut keys to access VIN scan, DTC lookup, battery inspection, and monitor. Additionally, it offers free lifetime updates and has a multilingual menu and data display.

For more information visit
FleetMaintenance.com/21217232

Extends the capability of J1708/J1587 diagnostic tools

The **Universal J560 PLC Adapter**, No. 604020, from **NEXIQ Technologies** interfaces with all WABCO PLC trailer brakes and is field-updatable. Connect the J560 PLC Adapter to a vehicle between the tractor and the trailer, or to the trailer alone. It extends the capability of J1708/J1587 diagnostic tools to support J2497 Power Line Carrier communication. It extracts data from the power line and converts it to J1708. It can be used with ABS diagnostic software applications to detect ABS warning light messages, test in-cab trailer ABS warning lamps, and test SAE J1708 MID 10 and 11 messages and J1787 MIDs 136 through 139.

For more information visit
FleetMaintenance.com/21257209



Features anti-glare technology

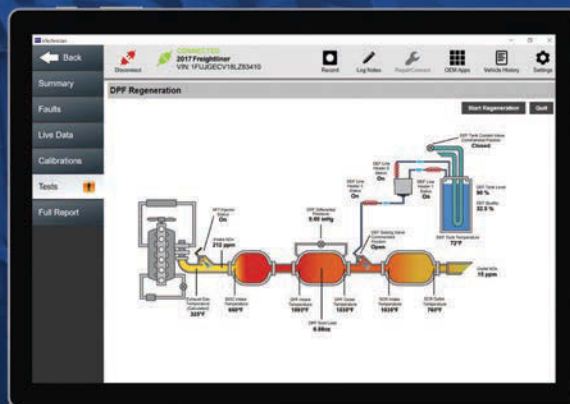
The **Getac Next Gen F110 Fully Rugged Tablet** features upgrades in processing speed, multi-tasking ability, high-level graphics and mapping capability, display brightness and daylight readability, mass storage operations, network connectivity, durability, and ergonomics. The 2021 models are able to withstand drops and are IP66 rated. The 11.6" LumiBond 2.0 touchscreen is operable using a stylus, finger, digitizer, or glove, even while wet, to ensure optimal productivity. Getac's Device Monitoring System (GDMS)1 enables the tablet to be monitored, diagnosed, and updated remotely to maintain peak condition. Additionally, the F110 offers a rotating hand strap to allow technicians to move throughout the shop without restricting the use of their hands.

For more information visit
FleetMaintenance.com/21228377

EXPERIENCE, INGENUITY, AND KNOW-HOW

NEXIQ Pocket HD™

Handheld Diagnostic Scan Tool
with "All Makes" DPF Regen



eTechnician™

The Most Advanced Truck
Diagnostics Software Available

USB-Link™ 2

The Commercial Vehicle
Industry's Leading VCI



NEXIQ First-Link™

Mobile Diagnostic App
The First-Link™ App Is Available on
the App Store and on Google Play



NEXIQ Blue-Link™
Mobile Vehicle Interface
9-pin and 16-pin



NEXIQ Blue-Link™ Mini
WINNER: PTEN
Innovation Award



Universal J560 PLC Adapter
Now interfaces with all
WABCO® PLC Trailer Brakes

Delivering Industry-Leading Vehicle Diagnostic Solutions for More Than 35 Years

NEXIQ
TECHNOLOGIES®

For more information, contact NEXIQ Technologies at 800-639-6774 or www.nexiq.com.

©2022 IDSC Holdings LLC. All rights reserved. NEXIQ Technologies is a registered trademark of IDSC Holdings LLC. All other marks are trademarks or registered trademarks of their respective holders.
FleetMaintenance.com/inquire Pictures for illustration purposes only. Specifications subject to change without notice.



DIAGNOSTIC TOOLS



1,000V AC/DC voltage and 10A AC/DC current

The **Lang Tools CAT IV Digital Multimeter**, No. 13811, is a handheld professional multimeter that can measure up to 1,000V AC/DC voltage and 10A AC/DC current. It can also measure resistance, diode, continuity, and mx-Pulse/duty cycle. The multimeter features auto ranging, data hold, and is CAT III 1,000V and CAT IV 600V rated. The multimeter includes test leads, batteries, temperature probe, and a manual.

For more information visit
FleetMaintenance.com/21250498



Offers improved accessibility in tight locations

The **TA496 PicoBNC+ 60A DC Compact Current Clamp** from **Pico Technology** features a small design, offering users improved accessibility in tight locations. With built-in PicoBNC+ technology, the TA496 is easy to use and doesn't need maintenance as it is powered by the PicoBNC+ oscilloscope. Once connected to the oscilloscope, it's automatically recognized, zeroed, and its output scaled by the software. This saves users from having to select the probe in the software and users don't have to change the range on the probe itself. Simply select a range in the software and the probe will take care of itself. Signal accuracy and clarity is more noticeable when operating in low ranges. The clamp has a CAT II 300V rating and is double insulated.

For more information visit
FleetMaintenance.com/21256991



Includes the HDS 1000 touchscreen tablet

The **Bosch ESI (truck) 3824A Heavy Duty Diagnostic Solution** enables technicians to effectively diagnose and repair a wide range of heavy-duty trucks and commercial vehicles. It includes the HDS 1000 touchscreen tablet and a 12-month license for heavy-duty truck software usage—including manufacturer, engine, and system coverage—to assist technicians in navigating complex systems and reducing fleet downtime. The diagnostic capabilities account for enhanced bidirectional controls, diesel particulate filter regeneration, injector coding, and more, with extensive make, model, engine, and system coverage.

For more information visit
FleetMaintenance.com/21234851



Offers rubberized outer protection

The **TOPDON Phoenix Pro Diagnostic Scan Tool** provides OEM-level functionality from comprehensive OBD-II diagnostics and services to advanced ECU coding and programming. Based on an Android operating system, the Phoenix Pro features an 8-core 2.0GHz processor and a 12" touchscreen. It's built with rubberized outer protection and rugged internal housing. The scan tool offers interactive data logging sessions to enable contact with tech support and an automatic power-off to preserve battery life. It also has functions of vehicle diagnosis, oscilloscope, ignition scope, sensor simulator, multimeter, battery test, and videoscope.

For more information visit
FleetMaintenance.com/21233055

Ability to connect to Wi-Fi 6 and Bluetooth 5.1

The **Panasonic Updated Semi-Rugged TOUGHBOOK 55 Laptop** incorporates an 11th Gen Intel Core i5 and i7 processor (with Intel vPro technology) and double the standard memory from the last version while increasing speeds by 50%. The upgrade includes Thunderbolt 4 and an NVMe



OPAL SSD to deliver ideal performance with added security and device management benefits. With the ability to connect to Wi-Fi 6 and Bluetooth 5.1, the updated TOUGHBOOK 55 offers enhanced connectivity, ensuring workers can access critical information in real-time. Mobile workers can conduct their workday uninterrupted with all day battery life and hot swap capability with the optional second battery.

For more information visit
FleetMaintenance.com/21236024

Features EZ-sensor programming

The **ST-1 TPMS Tool** from **Schrader TPMS Solutions** features

EZ-sensor programming and an ID-Sync function for matching scanned IDs to vehicle ECU IDs. The tool triggers OE sensors for all cars in North America, Europe, and Asia. It displays all sensor data (pressure, battery, temperature, ID, frequency) and indicates OE sensor and service kit part numbers. In addition, it provides TPMS ECU relearn procedures and retrieves and decodes TPMS DTC information. The TPMS tool has a 2.8" LCD screen, protective rubber sleeve, is Wi-Fi capable, and comes with a quick-connect cable and carrying case.



For more information visit
FleetMaintenance.com/21247062

Detects invisible problems quickly

The **Innova Electronics Multi-Purpose Infrared Inspection Camera**, No. 3360, is designed to detect invisible problems quickly. With advanced infrared technology, the multi-purpose precision camera uses thermal sensors to target and record temperatures. Users can turn thermal images into a photo that can be stored and viewed at a later date. They can also download images to their personal computer to edit, share, or print.

For more information visit FleetMaintenance.com/21246000



Features a two-way pivoting 5.5mm probe camera

The **Oasis Scientific Vividia VA-455i USB Flexible Smartphone Two-Way Articulating Inspection Camera Borescope** is an ideal diagnostic inspection camera for auto mechanics and technicians. It features a 5.5mm diameter, 1m long flexible probe that is covered with a durable and waterproof polymer tube. The VA-455i has bright LEDs, two-way pivoting 5.5mm probe camera, and can be directly connected to an iPhone, iPad, or Android phone or tablet via a USB data cable. The inspection camera is suitable for many applications, such as looking into engine cylinders, behind instrumental panels, or inside brake systems. Note: Some Android devices may not work due to the restriction of the Android developers.

For more information visit FleetMaintenance.com/21243560



Provides advanced wireless connectivity

The **Zebra Technologies ET8x Series Rugged 2-in-1 Windows Tablets** are designed to improve productivity and safety across multiple industries. The tablets have support for Wi-Fi 6E and 5G, providing advanced wireless connectivity to help ensure mobile workers remain connected in any environment. The thin and light ET80 and ET85, which run on Intel 11th Generation processors, are a portable option in the field and can be purchased with a detached rugged keyboard featuring a friction hinge so workers can experience a complete laptop-like experience on the go, in their vehicles, or in the shop.

For more information visit FleetMaintenance.com/21238062



Lead wire automatically retracts

The **S & G Tool Aid Circuit Tester with Digital Display**, No. 28350, is designed to measure 6V, 12V, 24V, and 48V systems. The tester quickly and easily checks voltage, power, ground, and circuitry without the need to hook up complex equipment. The display numbers are tall and easy to read. A red LED indicates power (+) and a green LED indicates ground (-). The lead wire stretches up to 11' for use, then automatically retracts. The tester is computer safe and draws less than 10 milliamps at 12V. A heavy-duty ground clip with insulator and a sharp stainless steel probe are components of each tester.

For more information visit FleetMaintenance.com/21239289

AUTEL MAXISYS CV

MS909CV + BATTERY

LARGE & IN CHARGE

BATTERY TOOL WITH CLAMPS INCLUDED

HEAVY DUTY MS909CV

BATTERY, INTELLIGENT DIAGNOSTICS, AND ADAS CALIBRATION ALL IN ONE TABLET

BATTERY FEATURES

INCLUDES: CURRENT CLAMP & MULTIMETER

- Support In-Vehicle and Out-Of-Vehicle Testing
- Generated HD Battery Test & Health Report
- Test 6- and 12-Volt Batteries: 100 - 2000 CCA
- Test 12- and 24- Cranking/Charging Systems
- Test Flooded, AGM, AGM Spiral, EFB and GEL Batteries
- Compatible with CCA, CA, SAE, EN, IEC, DIN, JIS and MCA

MS909CV FEATURES

INTELLIGENT DIAGNOSTICS

- Covers Over 80 Makes & Models
- Lightning-Fast All System AutoSCAN
- Module Topology On Select Vehicles
- Bi-Directional Controls/Active Tests
- Module Programming with MaxiFlash VCI
- ADAS Calibration (additional purchase may be required)

MOST COMPREHENSIVE HEAVY DUTY DIAGNOSTIC TABLET IN THE INDUSTRY



TRI-
ROAD
SERVICE

AUTEL MAXISYS
MS906CV

AFFORDABLE MAINTENANCE
ESSENTIAL DIAGNOSTICS



TEL: 855.288.3587 • EMAIL: USSUPPORT@AUTEL.COM
AUTEL.COM • MAXITPM.COM • MAXISYSDAS.COM
 ©2022 AUTEL U.S. INC., ALL RIGHTS RESERVED

FleetMaintenance.com/inquire

April 2022 • Tools & Shop Equipment 9



Hunter Engineering ADASLink Calibration Tool

Reviewed by Scott Brown, owner/technician at Connie & Dick's Auto Service Center Inc. in Claremont, California



Procedures List" on the ADASLink, it provides a list of vehicles to connect to in order to carry out the ADAS calibration procedures.

Once that's done, the Hunter Aligner automatically couples the alignment report with the ADAS calibration documentation and the DTC pre-post scan report.

Q: How did the equipment function as far as saving you time?

A: The tool coupled with the latest Hunter Engineering Hawkeye Elite wheel alignment system does a remarkable job of not only handing off the ADAS calibration procedure to the scan tool/ADAS calibration equipment but also produces a comprehensive report that documents what was done to the vehicle and why.

Q: How easy was it to use?

A: Once the alignment machine is properly tied to the ADASLink tablet, all you need to do is follow the instructions provided, but you still need

to have access to service information systems so you can carry out specific procedures called out within the workflow by the ADASLink.

Q: How was its packaging? Did it come with any accessories?

A: The tablet is the Bosch ADS625x coupled with a wireless VCI. It comes with a nice docking station that hosts and charges the tablet and VCI.

Q: What features did you like?

A: I love the fact that the Hunter alignment machine sends a procedures requirement list to the tool. And when the technician hits the "Requested

Q: Is there any way you could think to improve or add to this tool?

A: While in certain modes within the scan tool, I found a screenshot button to be very helpful so that I can help train fellow technicians. But some screens don't have that screenshot button. Also, on the calibration success screen, it would be nice to have the time, date, and VIN, so that any screenshots taken could carry better context.

To read the full review, visit FleetMaintenance.com/21259614.

The Wait is Over. Introducing the **HD Pro III**.



Introducing the **HD Pro III** our latest **all-in-one, do-it-all scan tool**, covering **class 4-8 commercial vehicles** and **off-highway machinery**, such as mining and farming equipment. The **HD Pro III** is a wired Android tablet, perfect for those in a budget, looking to perform bi-directional controls and change & set parameters, diagnose hydraulic systems, brake systems, and perform VGT calibrations and DPF resets/regeneration. What's even better is that it now comes with **Two years of Motor's FleetCross Service** - a premier repair information database accessible from within the **HD Pro III**. Two years of software updates and all cables and connectors are included.

2 Years Motor FleetCross | 2 Years Software Updates | Class 4-8 HD & Agri-Industrial

Full Engine/ Brakes/ Transmission/ BCM Coverage with
Bi-Directional Controls, Adaptations and Special Functions



WATCH NOW

CanDo
INTERNATIONAL, INC.

2 YRS OF SOFTWARE UPDATES!
CABLES & CONNECTORS INCLUDED



www.candointl.com • 909-Cando-11 (226-3611)

FleetMaintenance.com/inquire

Optimal 2 in 1 Modern Diagnostic Tool

AUTOMOTIVE & HEAVY-DUTY

X-431 Torque AUTOHD



Optimizing ADAS Calibration Performance(Automotive)



X-431 ADAS MOBILE

Compatible with HD Trailer



J560 PLC CONNECTOR



Autel BT608 Battery & Electrical System Analyzer

Reviewed by Chris Groff, diagnostician, Lykon Automotive, Bristol, Pennsylvania



Q: What types of jobs/repairs did you use this tool for?

A: I used it for quick evaluations of various vehicles/batteries. I was able to quickly verify failed alternator diodes in a late model Freightliner truck as well as verifying that the discharged batteries were salvageable. I also used it for quick battery replacement and resets on Mercedes and BMW vehicles.

Q: How did the tool/equipment function as far as saving you time?

A: It was a massive time saver with the built-in reset functions and procedures.

Q: How has using this tool impacted your shop's profitability?

A: It increases profitability by reducing set-up/evaluation time. Autel's adaptive conductance testing allows effective

determining of the state of health of the battery at almost any given state of charge. This saves the customer and the shop time. No longer do we have to sit there and charge a battery for two, three, four hours just to find out that it's bad and needs replacement.

Q: What kind of setup was involved before using the product?

A: You have to charge the unit and perform registration and software updates.

Q: How easy was it to use?

A: It's a very intuitive usage even if you aren't intimately familiar with the Autel software architecture.

Q: How was its packaging?

A: It came in a good quality blow molded case with battery terminal adapters

and basic cables that are needed for functionality. Multimeter leads and amp clamp are the additional accessories that can be purchased.

Q: Was there a manual included?

A: A manual was included, but the tool was intuitive enough that I did not feel the need to use it.

Q: What features did you like?

A: I liked the built-in reset features, flexibility of battery testing, and the built-in scanner.

Q: Any way to improve the tool?

A: I'd like to use the built-in thermal printer not just for printing battery reports, but also to print other things like readiness monitor status or some DTC scans.

Q: How does this tool compare to other tools you've used like it?

A: The tool is much more consistent in its readings and more flexible in its testing capabilities than other handheld battery testers I've used.

To read the full review, visit FleetMaintenance.com/21259613.

Lisle Relay Pro 12V and 24V Relay Tester

Reviewed by Ken Elzinga, diagnostic technician and owner of Hilltop Auto Service in Byron Center, Michigan



Q: How did the tool/equipment function as far as saving you time?

A: The tester was timesaving because with this tool we were able to quickly give a pass/fail result to a suspect relay. This tool allows the tech to make that decision quickly and with confidence.

Q: What kind of setup was involved before using the product?

A: No real setup of the tool was necessary. Technicians just have to understand the different terminals of the relay and hook up the tool accordingly.

Q: How easy was it to use?

A: The tool was easy to use and comes

with good instructions for hooking the tool up to test a relay.

Q: How was its packaging? Did it come with any accessories?

A: Packaging was appropriate for this tool; all needed accessories were included. This means that the necessary terminals were included to hook up to various relays that would be tested.

Q: What features did you like?

A: I think the ability of the tool to test a relay under a load and multiple times is helpful in identifying faulty or intermittently failing relays. This is the most valuable function of this tool.

Q: Is there any way you could think to improve or add to this tool?

A: There are new electronic relays that are starting to be used in our industry. Possibly an updated tool to test these relays would be helpful. Some of these relays are pulse width controlled and are difficult to test. A tester that would give a pass/fail would be helpful.

Q: On a scale of 1 to 10, how would you rate this tool overall?

A: I would give it a 10. Lisle continues to come out with innovative tools to help the techs who are working on today's vehicles, and this is a good but inexpensive tool for anyone who does electrical diagnosis.

To read the full review, visit FleetMaintenance.com/21259616.



35' inspection range

The **TPOPUVMR OPTI-PRO UV MAX R** from **Tracer Products** is a rechargeable violet light leak detection flashlight with an adjustable focus, 35' inspection range, and a high-low output setting. With a powerful beam, technicians can spot hidden and hard-to-find micro leaks. The strobe light feature helps technicians contrast dye fluorescence from the surrounding area more easily.

For more information visit FleetMaintenance.com/21245999

Features a graphical user interface

The **Bartec TechRITEPro** is designed to offer technicians of all levels high-powered functionality at an entry-level price. The TechRITEPro also serves as a Rite-Sensor programmer and includes Bartec's Rite-Sync technology as well as OBD-II relearns and VINDicate. Like the Tech600Pro, the TechRITEPro has an easy-to-learn graphical user interface and menu flow. In addition, it offers a rechargeable battery, heavy-duty OBD-II cable/connector, improved LF signal and UHF detection, and an 8" high resolution color display.

For more information visit FleetMaintenance.com/21233048



Built-in internal compressor for mobile repairs

The **Mastercool Dual EVAP/High Pressure Diagnostic Smoke Machine with Truck Adapter Accessory Kit**, No. 43070, is designed

for EVAP, turbo/intake, and heavy-duty truck testing. It features an internal compressor; the unit doesn't need shop air, but has the ability to utilize shop air and inert gases if and when needed. The kit includes adapters for EVAP, high pressure, and heavy-duty truck testing.

For more information visit FleetMaintenance.com/21257958



Make sure the road runs through your shop.

Build your business to fully service OTR vehicles up to class 8 single- and multi-axle road tractors and trailers.

Scan or visit hunter.com/hd

HUNTER
Engineering Company



FleetMaintenance.com/inquire

Power Tool Purchase Considerations

- ✓ Handle shape, size, length, material
- ✓ Tool style, size, and weight
- ✓ Portability
- ✓ Power trigger type
- ✓ Controls and switches
- ✓ Ergonomics
 - Does the tool have features that increase worker performance and productivity while reducing discomfort, fatigue, and risk of injury?
- ✓ How much power/torque is required?
- ✓ Need for variable speed control
- ✓ Vibration and noise level
- ✓ Safety features
- ✓ Accessories/attachments
- ✓ Service recommendations
- ✓ Durability
- ✓ Warranty
- ✓ Training resources
- ✓ Technical support
- ✓ Brand reputation
- ✓ Budget range/price
- ✓ For cordless tools:
 - What type of battery does the tool have? Battery type determines how long the battery provides power and how much time is required for recharging.
 - Consider battery voltages. Eight to 12V systems are more common for ratchets, lighting, and applications requiring lower rpm. Eighteen to 20V systems are most common for impact wrenches. Over 20V is available for extended applications such as grinders.
- ✓ For pneumatic tools:
 - Every air tool has an operational compressed air requirement measured in cubic feet per minute (cfm). Every air compressor has a maximum cfm output. The air compressor's cfm output must be greater than the cfm requirement to keep all the pneumatic tools in the shop operating efficiently.
 - Compatibility with existing systems.



Features a 3-1/2" stroke length

The **Mighty Seven Heavy Duty Air Hammer with Long Barrel**, No. SC-212C, features an industrial-grade aluminum body, alloyed steel cylinder, and hardened piston. It delivers 2,200 bpm and has a 3-1/2" stroke length. The air hammer comes with a 4-pc round shank chisel set, designed for cutting and shearing various surface and material. It's held by a spring-type quick-change retainer and has a one-year warranty.

For more information visit FleetMaintenance.com/21214287



Designed to stop quickly for added safety

The **Milwaukee Tool M18 FUEL 4-1/2" / 5" Braking Grinders with ONE-KEY**, Nos. 2882-22 and 2883-22, are available with paddle switch, no-lock, and slide switch, lock-on options. The grinders generate 11A corded power, deliver 8,500 rpm, and feature a RAPIDSTOP brake to quickly stop accessories with an abrasive disc. Both grinders also offer the company's proprietary Powerstate brushless motor, Redlithium battery pack, and Redlink Plus intelligence. For ease of use, the grinders feature tool-free adjustable guards and accessory changes to provide quick guard installations and adjustments. FIXTEC Nut technology allows for tool-free accessory changes while remaining compatible with common accessories.

For more information visit FleetMaintenance.com/21224378

360-degree double-swivel air fitting

The **Marson AH-250 Pneumatic Riveter**, No. M39510, from **Howmet Fastening Systems** installs a wide variety of industrial fasteners using standard Huck nosepiece assemblies or the Marson Universal Nose Assembly that quickly sets many different styles of lockbolts and blind rivets. Forged from lightweight aluminum alloy, the AH-250 delivers consistent pulling force for high-volume assembly, and it has an ergonomic, soft-grip handle to minimize worker impact during extensive use. Additionally, it features a left or right side air inlet, 360-degree double-swivel air fitting, oil refill hole, and has a noise silencer and shock-reducer design.

For more information visit FleetMaintenance.com/21237263



Features spindle lock for quick wheel changes

The **Dynabrade Nitro Series Electric Dynisher**, No. DYS1, is ideal for blending and finishing stainless steel, leaving an in-line scratch pattern. It can be used on other metals, as well as plastics, composites, and more. The compact, right-angle tool features a low center-of-gravity, making it easier to control the tool and to keep the line grain straight. It has a locking trigger for extended use, spindle-lock for quick wheel changes, a variable speed dial (up to 3,000 rpm), comfortable ergonomic design, and 1.3 hp. In addition, its multipurpose 3/4" arbor can be removed to allow threaded adapters for mounting different threaded wheels.

For more information visit FleetMaintenance.com/21234681



YOUR FLEET MAINTENANCE TOOL SOURCE!

VIBROTHERM by AIRCAT DRIVE®

Impact Wrench Series

VIBROTHERM DRIVE® mechanism reduces vibration levels by 30%-40% and increases the life of the mechanism by 50%

SUPER DUTY LOW WEIGHT IMPACT WRENCHES



1993

1" STRAIGHT IMPACT WRENCH WITH 7" EXTENDED ANVIL

Provides 2,100 ft-lb maximum torque and 2,300 ft-lb of loosening torque



1993-1-VXL

1" STRAIGHT IMPACT WRENCH

SUPER DUTY IMPACT WRENCHES IDEAL FOR TIRE SHOPS



1992

1" STRAIGHT IMPACT WRENCH WITH 8" EXTENDED ANVIL

Provides 1,800 ft-lb maximum torque and 2,000 ft-lb of loosening torque

1778-VXL

3/4" VIBROTHERM DRIVE®

COMPOSITE IMPACT WRENCH

Provides 1,450 ft-lb maximum torque and 1,700 ft-lb of loosening torque



1870-P

1" SUPER DUTY COMPOSITE PISTOL GRIP IMPACT WRENCH

Provides 1,900 ft-lb maximum torque and 2,100 ft-lb of loosening torque

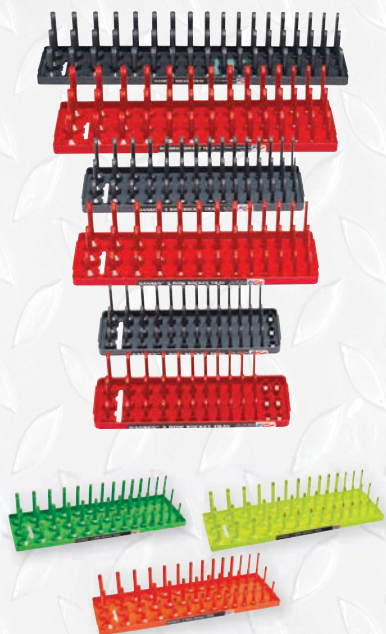


1994

1" SUPER DUTY STRAIGHT IMPACT WRENCH WITH 8" EXTENDED ANVIL

Provides 2,300 ft-lb maximum torque and 2,500 ft-lb of loosening torque

Eliminate chaos
and clutter with
the **ORIGINAL**
socket tray *invented*
by Hansen Global.



- Organize tools by size and style for easy identification.
- Secure regular, deep and semi-deep sockets all on one tray.
- All trays are molded from rugged ABS plastic to shrug off grease, chemicals, and other debris, and come with a lifetime guarantee.
- 3 row trays available in 1/2", 3/8" and 1/4" drive.
- 2 row trays available in red, gray, orange and green.



Proudly 100% made in the USA
since 1995 – Lifetime Guarantee.

877-793-5213

hansenglobalinc.com

FleetMaintenance.com/inquire



POWER TOOLS



Adjustable spark protector

The **Mueller-Kueps Mini Angle Disc Cutter**, No. 297 003, is lightweight and compact. Small but mighty, the mini angle disc cutter is ideal for use in hard-to-reach areas such as under the hood. The tool is for cutting and grinding wheels with a diameter of 2" and features a center bore of 0.4". The spark protector is adjustable and replacement cutting disks are available in a 25 pack.

For more information visit
FleetMaintenance.com/21240837



Dual battery bays for double the run-time

The **Durofix 1" Cordless Jumbo Impact Wrench**, No. RI60176, features 3,000 ft.-lb. maximum reverse torque and five stages of pre-set tightening torque: 250, 500, 800, 1,250, and 2,200 ft.-lbs. Utilizing 60V Li-ion battery technology and a brushless motor, the tool is designed to provide power, efficiency, less heat, and less maintenance. The impact wrench has an auto-shutoff for stage one to four and offers dual battery bays to double its run-time. It also has an adjustable side handle and two side LEDs. Available with a 2" or 6" extended anvil.

For more information visit
FleetMaintenance.com/21249595



Has an onboard air pressure gauge

The **Ingersoll Rand 3/4" Impact Wrench**, No. 2146Q1MAX, features an air gauge that indicates whether it is operating at, below, or above the tool's maximum rated air pressure of 90 psi. The onboard air pressure gauge is situated on the back and monitors the air pressure ranging from 60 psi to 120 psi. The tool delivers up to 2,000 ft.-lbs. of nut-busting torque, has the ability to quickly dial in power settings, has a six-vane motor to remove stubborn bolts reliably, and is built to withstand tough use. Also available with a 1" drive (No. 2146Q2MAX).

For more information visit
FleetMaintenance.com/21249594



Composite handle for less heat transfer

The **Chicago Pneumatic 1/2" Impact Wrench**, No. CP7741, is ideal for operators working in maintenance or tire changing applications. The tool offers a free speed of 10,000 rpm, forward working torque range of 90 to 510 ft.-lbs., and a maximum reverse torque of 715 ft.-lbs. It also has three forward settings and a composite handle for less heat transfer. The tool measures 7.2" in height and weighs 4.96 lbs.

For more information visit
FleetMaintenance.com/21241337



Dependable. Safe. Long Lasting.



Experience
The Gray Difference

At Gray Manufacturing, your ability to do business is our top concern. Our vertically integrated manufacturing process means that every component of our quality truck lifts is manufactured and built by Gray. When you need a repair or replacement part, you make one phone call. We specialize in service after the sale and are invested in your success as a service and repair facility.

Give us a call at 1-800-821-7320 today to learn more!

- Clutch Jacks
- Engine Stands
- Floor Service Jacks
- Fluid Handlers
- Fork Lift Jacks
- Miscellaneous Equipment
- Mobile Column Lifts
- Oil Filter Crushers
- Shop Cranes
- Shop Presses
- Surface Mounted Lifts
- And more!



1.800.821.7320 • GRAYUSA.COM

FleetMaintenance.com/inquire



AIRCAT 115 degree Angle Die Grinder, No. 6295

Reviewed by John Baumgardt III, owner
of Baumgardt's Auto Repair in Fillmore, Indiana



Q: How did the tool/equipment function as far as saving you time?

A: The angle of this grinder helped me get into areas that a straight or a 90-degree die grinder wouldn't.

Q: What kind of setup was involved before using the product?

A: Screw on an air fitting, a few drops of oil and a couple squeezes of grease into the side of the head and it was ready for a 1/4" accessory.

Q: How easy was it to use?

A: It was simple to use. The flapper trigger has a safety feature that I would normally remove, but this one actually worked well and I could easily release it as I was ready for the power. You can rotate a collar at the base and adjust where the exhaust blows out instead of just blowing straight back along your

hose. I ran this thing full blast for 15 minutes and my hand didn't get cold like it does after just a few minutes with my others.

Q: How was its packaging? Did it come with any accessories?

A: I opened the glossy black and red box and found the grinder nestled in its own black AIRCAT cloth pouch. It came with a wrench to change out accessories, pocket guide to whet your appetite for your next AIRCAT purchase after you try this baby out, a manual, and a thank you card welcoming you to AIRCAT ownership (which I personally think is pretty cool).

Q: What features did you like?

A: I like being able to control where the exhaust is going. I really like the button that locks the head so you only

need one wrench to change out the accessory, because using two wrenches and trying to hold the tool is a pain. The composite body letting my hand stay warm is pretty darn cool too.

Q: How has using this tool impacted your shop's profitability?

A: Being able to get into awkward spots saved time, which means I can move on to the next project faster.

Q: On a scale of 1 to 10, how would you rate this tool overall?

A: I give it a nine. It is a great tool. Lightweight composite body, adjustable exhaust deflector, quiet. It would be great if it was bi-directional to be able to better control the debris.

To read the full review, visit
FleetMaintenance.com/21259618.

Makita LXT 1/4" and 3/8" Cordless Ratchets

Reviewed by Eric Moore, fleet manager
at Griffin Pavement Striping in
Columbus, Ohio



Q: How did the tool/equipment function as far as saving you time?

A: The LXT lineup is the current top dog by Makita. This ratchet is great for mobility and functionality. The versatility to use either 1/4" or 3/8" greatly increased the range of jobs it can be used for. No dragging air lines around or losing time in tight spaces where a traditional hand ratchet wouldn't have range of motion. Its slimmer profile helps it get into more restricted places.

Q: How easy was it to use?

A: With a charged battery, the LXT ratchet is pretty much point-and-shoot. Place the desired socket on the

adapter, apply it to the fastener, select a direction and pull the trigger.

Q: How was its packaging? Did it come with any accessories?

A: It was packaged in a branded cardboard box. The LXT ratchet comes with the tool, rapid charger, one battery, 1/4" and 3/8" interchangeable adapters, and a branded canvas carry bag.

Q: What features did you like?

A: The Makita LXT ratchet has a slim-

mer profile than other cordless ratchets, making it easier to use in tight spaces. We appreciate how the battery mounting is in line with the profile.

Q: Is there any way you could think to improve or add to this tool?

A: If Makita is going to stick with the interchangeability of the drive heads, I'd like to see a positive locking feature and a good secure storage option for the remaining drive head. Maybe make the heads opposing, so have 1/4" on one side and the 3/8" on the flip? It would make the trigger possibly awkward on the flip, so maybe allow for the head to be flipped and indexed? I know of traditional hand ratchets like this out there.

Q: On a scale of 1 to 10, how would you rate this tool overall?

A: With the thin profile, interchangeable heads, higher rpm, and overall balance, we feel confident that this tool rates a solid nine.

To read the full review, visit
FleetMaintenance.com/21259619.

Ultra-slim 3-5/16" adjustable head

The **Matco Tools 1/2" Drive Dual Flex Angle Pneumatic Impact Wrench**, No. MT2612, features an ultra-slim 3-5/16" adjustable head, allowing users to use an impact tool where previously only hand tools would fit, the company said. The impact wrench delivers up to 400 ft.-lbs. of breakaway torque and the head angle is tension adjustable based on preference (includes wrench). It has a front head exit exhaust.

For more information visit FleetMaintenance.com/21233812

Offers three variable forward and reverse settings

The **Snaph-on 18V 3/8" Drive Brushless Cordless Impact Wrench Kit**, No. CT9010, is designed for applications that demand consistently high performance. It is lightweight yet provides 240 ft.-lbs. of working torque output and 325 ft.-lbs. of bolt breakaway torque. The digital microprocessor-controlled switch maximizes performance with three variable forward and reverse settings that help the tool adapt to various applications. A built-in brake quickly stops the anvil to prevent throwing fasteners while the brushless motor provides a smooth start-up. The CT9010 weighs 4.9 lbs. with the battery, and offers a bright 100 lm LED headlight to illuminate the work area. The kit includes two 5Ah batteries and a charger with a built-in USB port.

For more information visit FleetMaintenance.com/21229417



Deliver up to 20% more power than the CP91 range

The **Chicago Pneumatic CP74 Series Pneumatic Die Grinders** deliver up to 20% more power than the CP91 range. A collet design for quick and easy burr changes helps optimize productivity. The CP74 Series offers six different heads, including short/long and straight/angle. The die grinders operate between 22,000 and 28,000 rpm.

For more information visit FleetMaintenance.com/21225062



USE AIR POWER TO GET THE DIFFICULT JOBS DONE!

LT1900 10 Piece SAE Shockit Crows Foot Set
LT1910 10 Piece Metric Shockit Crows Foot Set
HD INDUSTRIAL/HYDRAULIC FITTINGS



AIR HAMMER POWERED

LT1920 13 Piece SAE Shockit Line Wrench Set
LT1930 12 Piece Metric Shockit Line Wrench Set
AUTOMOTIVE/HYDRAULIC FITTINGS



LT1900



LT1930

- Must be used with Shockit Punches for maximum performance & warranty coverage
- Uses the force and vibration of an air hammer
- Air hammer powered punch allows for use in tight places
- LT1910P 11" Standard Shockit Punch now included with every set at no additional cost
- Indexed holes keep Shockit Punches from slipping off crows foot & line wrench
- Shockit Crows Foot Sets - easy access to hydraulic fittings, nuts and bolts
- Shockit Line Wrench Sets - avoid subframe removal for hydraulic line work
- 30% more steel, 30% stronger
- Patent #7,677,143 and other patents pending
- Additional Shockit Punches sold separately - see Shockit Punch Kit section



LT1910PK Shockit Punch Kit

Kit includes:

- LT1910PS** - 5.5" Short Punch
- LT1910P** - 11" Standard Punch
- LT1910PL** - 22" Long Punch

AIR HAMMER POWERED

- 8mm radius Shockit Punch tips are designed to fit precisely into indexed holes on all Shockit tools for maximum performance and warranty coverage
- Offset design
- Non-turning slots
- Patent Pending



INDIVIDUAL SHOCKIT PUNCHES ALSO SOLD SEPARATELY

LT886 Radiator Rocket Coil & Line Cleaner

IDEAL FOR TRANSPORT, MUNICIPAL, AGRICULTURE, INDUSTRIAL & HD TRUCKS

- Use the Radiator Rocket and you will be surprised how dirty your "clean" radiator is
- Clean cooling coils for radiators, transmission lines, oil and fuel lines, air aftercoolers, condensers, evaporators and much more
- Can be configured in 3 foot; 2 foot; or 1 foot lengths
- Eliminates need for vehicle jacks or lifts to access buried coils
- Use up-close without fear of air pressure bending fins
- Able to access gaps of 1" with brush, .7" without brush
- Designed for shop and field use
- **CAN ALSO BE USED WITH WATER**
- Patent pending

THIS ROCKET RUNS ON AIR POWER!



RADIATOR ROCKET



Scan to see!

LT855-AH Texas Twister™ Bidirectional Air Hammer

- Use as a hammer or use as a puller - double duty air hammer
- Just install the included air lock plug into quick release chuck in front of air hammer to convert to pneumatic puller
- Works with LT855A Texas Twister™ Air Hammer Pulling Kit accessories
- Unlimited applications in automotive, aircraft, marine repair, farm implement maintenance, manufacturing industries
- Patent #7,036,211



Scan to see!



In use w/855-2A seal remover (not included)



LT855A Texas Twister™ Air Hammer Pulling Kit

- Now you can convert your air hammer into a pneumatic slide hammer
- Pull axles, seals, diesel injectors, bearings, pulleys, harmonic balancers, axle pinion flanges, old distributors & much, much more
- Connect to your specialty pullers and Vise grips
- **NO MORE SLIDE HAMMERS!**
- Patent #7,036,211.

Texas Twister™ = PULLING POWER



air hammer not included



Scan to see!



AIR HAMMER POWERED



Innovator of Great Ideas

LOCK TECHNOLOGY, INC.
Toll Free 800-421-7241
www.ltitools.com
ltitools@ltitools.com

FleetMaintenance.com/inquire



Hand Tool & Specialty Tool Purchase Considerations

- ✓ Tool design: Style, size, shape, weight, etc.
- ✓ Ergonomics:
 - How well does the tool fit the hand?
 - Can the tool be used in a comfortable work position without causing awkward postures, harmful contact pressures, or other safety and health risks?
 - Does the balance and the weight feel right?
 - How easy is it to use?
- ✓ Quality
- ✓ Durability
- ✓ Warranty
- ✓ Product support
- ✓ Brand reputation
- ✓ Budget range/price

Molded tip ID for easy recognition



The **Mac Tools 7-pc Mac-Grip Tamper-Resistant Torx Screwdriver Set**, No. SDL7TPR, features a 360-degree ergonomic textured grip for maximum comfort for high torque applications. The tips are vapor blasted for protection against corrosion and improved gripping force. Molded tip IDs offer easy recognition of tip type in the vertical position. The handle is nylon-alloy which is chemically resistant to gasoline, disk brake cleaner, brake fluid, motor oil, hydraulic fluid, ethylene glycol, and acetone. The bars are alloy steel and have a high-polished chrome finish for a high quality, professional look. The set includes T8 to T30.

For more information visit FleetMaintenance.com/21227551

Extends up to 18"

The **ATD Tools 3/8" Drive 3-in-1 Variable Length Ratchet**, No. PLT-99638, features one ratchet that can work in four different lengths. The handle extensions securely attach to a compact 4" fixed head ratchet and can extend 18" to help reach fasteners and to provide additional torque. Made from chrome vanadium steel, the ratchet can provide up to 300 ft.-lbs. of torque and requires only 5 degrees of movement. The 72-tooth ratchet meets or exceeds ANSI specifications and includes a tray with lid for easy storage. It has a limited lifetime warranty.

For more information visit FleetMaintenance.com/21213220



Removeable pocket clip



The **Wedge Slim Everyday Carry Flashlight** from **Streamlight** is a compact, high-performance EDC light designed for clean pocket carry. It's outfitted with a rotating thumb switch that provides control over its two lighting modes: constant-on and THRO (temporarily heightened regulated output). The rotatable switch also has a battery level indicator. The flashlight measures 5.65" in length, is made of anodized aluminum, and has a waterproof USB-C port. In addition, the deep carry, removeable pocket clip is able to attach on either side of the light.

For more information visit FleetMaintenance.com/21236733



For use in minimal access spaces

The **Tekton 3/8" Drive Folding Ratchets** are designed for use in minimal access spaces. They use a 90-tooth ratchet mechanism in the 3/8" drive head and extend into an offset ratchet. In partially folded positions, the handle is out of the way for greater access and in the fully closed position, they are an ergonomic palm ratchet. The joint is non-locking for continuous range.

For more information visit FleetMaintenance.com/21245985



Ideal for accessing the engine, door panels, and more

The **Mueller-Kueps XL Torx Screwdriver Kit**, No. 706 300, provides technicians with extra-long Torx screwdrivers. Made in Germany, each screwdriver measures a total length of 11.8" and are ideal for achieving improved reach and entry into tough-to-access areas such as the engine, car body, door panels, or dashboard. They are also ideal for adjusting the headlights on vehicles. The two-component handle ensures grip while the neon green and black body allows users to spot the screwdriver from across the shop. The 6-pc set includes: TX10, TX15, TX20, TX25, TX27, and TX30.

For more information visit FleetMaintenance.com/21229415



Steel construction with textured grip

The **Cal-Van Tools Adjustable Indexing Trim Clip Pliers**, No. 54, are designed to remove plastic anchors with center pins without causing damage to the pin or the anchor with one-handed operation. Its adjustable head allows access to hard-to-reach areas. The pliers are made from steel construction with a double-dipped textured grip.

For more information visit FleetMaintenance.com/21233806

HAND & SPECIALTY TOOLS



Headlamp and detachable flashlight in one

The **Fenix HM61R rechargeable headlamp** is a great multi-functional light that is not only a high-performance headlamp, but also a detachable right-angle flashlight—when removed from its headband—which includes a magnetic base and belt/pocket clip for continued hands-free use. The HM61R features eight lighting modes, including a red light, that are easily accessed via the large side switch. This light is rechargeable with a battery level indicator and IP68-rated waterproof/dustproof. The HM61R provides a maximum 1,200 lm, and a 300-hour runtime.

For more information visit
FleetMaintenance.com/21233537

Includes durable latching case for storage

The **Sunex Tools Simple Torque Indexing Torque Wrenches** are designed with a 16-position torque selecting mechanism that adjusts the torque and locks it into place with a simple press and slide of a button, reducing time and allowing users to go from minimum to maximum torque in less than a single rotation. Each torque wrench includes a durable case with latches for safe storage and are pre-calibrated to an accuracy of $\pm 4\%$. The torque wrenches include: 1/4" Dr. 25-250 in.-lbs., No. 10250; 3/8" Dr. 5-80 ft.-lbs., No. 30580; and 1/2" Dr. 10-160 ft.-lbs., No. 21160.

For more information visit
FleetMaintenance.com/21234687



Easily removes stubborn lug nut indicators

The **CTA Tools Heavy Duty Loose Lug Nut Indicator Removal Tool**, No. 5415, easily removes stubborn lug nut indicators from heavy-duty fleet vehicles. Loose lug nut indicators are a safety device that indicate when a lug nut has loosened over time. Removing a lug nut indicator by hand is difficult and time consuming. This removal tool features an extended frame for long reach and a tapered fork for clearance. To use the removal tool, simply slip the tapered fork behind the lug nut indicator and squeeze the handles with both hands.

For more information visit
FleetMaintenance.com/21234154



Eliminates broken fasteners

The **Lisle Corporation Long Door Panel Tool**, No. 35600, measures 19.75" in length making it ideal to reach upholstery clips in the middle of a door panel. Its square notch design removes both plastic and metal clips on cars and trucks. The tool helps eliminate broken fasteners and is easy to use. Simply place the tool under the edge of the door upholstery panel, insert into the fastener as far as possible, and then simply pry up. It's heat treated for durability.

For more information visit
FleetMaintenance.com/21234679

BIG TRUCKS BIG JOBS SMALL PRICES

 <p>Deutsch Terminal Service Kit Cat. No. 18650</p>	 <p>Master Terminal Service Kit Cat. No. 18700</p>	 <p>Deutsch Terminal Crimper 6/8/10 AWG Cat. No. 18870</p>
---	---	--

www.toolaid.com
FleetMaintenance.com/inquire



Coast XPH30R Headlamp

Reviewed by Randy Kaiser, technician/service and parts manager, Rost Motor, Inc. in Manson, Iowa



Q: How did the tool/equipment function as far as saving you time?

A: This headlamp is a great timesaver. You can slip it on and have it with you whenever you need extra light to see what you're working on. It's rechargeable, so you don't have to constantly be replacing the batteries.

Q: How easy was it to use?

A: It's actually very easy to use. There is a switch on the end of the light that turns it on and off and changes the brightness of the light. The lens on the front of the light turns to adjust the width of the beam of light. The body of the light turns in the bracket to adjust how far up or down the light points. If needed, the light can be easily removed from the mounting strap and used as a separate flashlight. The end cap is magnetic, so it can attach to anything metal, and shine where you need it.

Q: Did it come with any accessories?

A: The flashlight does come with a charging cord. It has one USB-A connector and two USB-C connectors. This makes it very adaptable to charging from a computer or power brick (which is not included). It also means that you can actually charge two devices at once, which is very handy.

Q: What features did you like?

A: The outer case is a very durable metal. The light beam is adjustable from flood to spot. The end cap lights up to indicate battery state of charge so that you know when to recharge it. The end cap also unscrews a little to expose the charging port for the battery. Or you can take out the battery completely and charge it. If you need to remove the battery to charge it, but still need to use the light, you can slip in two CR 123 batteries and you can continue to use it. The light is very bright, but if you need extra light for a

short time you can hold in the power button on the end cap and it goes into "Turbo Mode" and puts out 1,000 lm of light while you hold the button in. This level of light is designed for short-term use, but handy if you need it.

Q: How could the tool be improved?

A: The power cycle will take some getting used to. When you turn it on, it goes to medium brightness and then cycles through to high and then low. It's just different than most that go from low to high or vice versa.

Q: Is there any way you could think to improve or add to this tool?

A: It would be nice if the light came with a mounting plate that could be attached to a hard hat for those who are required to wear one. Then they wouldn't have to bother with the mounting strap on their hard hat.

To read the full review, visit FleetMaintenance.com/21259623.

KNIPEX TwinGrip Slip Joint Pliers

Reviewed by Rich Falco, technical instructor for Carquest Technical Institute in Palmetto, Florida



Q: How did the tool function as far as saving you time?

A: These pliers were great at multiple angles and openings. They were good for many jobs that I would normally use several different pliers for, so it saved me some time by not having to go back to my toolbox.

Q: What features did you like?

A: They are very good at grabbing from the side like typical pliers but also head-on. I was very surprised by how well it grabs at that angle.

Q: What types of repairs did you use this tool for?

A: I am currently restoring a 1974 Honda ST90 motorcycle. There has been 47 years of rust and abuse to this little bike. And as soon as I got these KNIPEX pliers, I knew this would be the ideal torture test for them. They worked very well on just about every nut, bolt, spring, clip, and rusted cotter pin I tried to grab with them.

Q: Have you used a previous version of this tool?

A: I have been a fan of the KNIPEX

brand pliers since I got my first set in the '90s. I own their wire cutters and pliers. These were a bit smaller than the other pliers I own, but I found they worked great on smaller components.

Q: Is there anything you had concerns about in regard to the tool?

A: Right out of the box, I thought they felt a little flimsy and I was concerned that I was going to have to write a bad review on one of my favorite brands. I was worried the small button and mechanism would not hold up. I'm happy to report they held up very well, even while trying to do a couple of things I probably shouldn't have with these small pliers.

Q: On a scale of 1 to 10, how would you rate this tool overall? Why?

A: I give them a 10. They are a great addition to my toolbox.

To read the full review, visit FleetMaintenance.com/21259620.



Removeable EVA foam dust filter

The **Brass Knuckle Grasshopper Dust Goggle/Spectacle combo**, No. BKDST-1010N, features a soft, comfortable EVA foam dust filter with built-in air channels that fills the gap between the glasses and the face, keeping dust out. The filter can easily be removed to transform the glasses into standard protective eyewear. The lenses are durable polycarbonate that meet industry test requirements and are manufactured with Brass Knuckle's BK-Anti-Fog coating. The flexible thermoplastic rubber temples provide hypoallergenic, non-slip comfort. The Grasshopper is also fully dielectric (no metal in the construction) for an extra measure of safety.

For more information visit
FleetMaintenance.com/21237672



Microfiber handle coating

The **Matco Tools 10-pc Top Torque II Screwdriver Set**, No. SSPCB10C, features both Phillips and slotted sizes. Lightweight and rugged, the blades are built with high-alloy German steel and have black phosphorus on the tip. The blades are molded into the handle and have a wide-forged butterfly in the end so that the blade will not turn in the handle, pound through, or pull out. The three-sided ergonomic handle allows for optimal turning power and torque. The screwdrivers also feature a microfiber handle coating to provide an ideal grip even when hands are slippery with oil, grease, or perspiration.

For more information visit
FleetMaintenance.com/21258028

Ideal for tight spaces

The **VIM Tools Heavy Duty 90T Ratchets**, Nos. HDR410, HDR614, and HDR818, feature a 90-tooth reversible gear head that requires only 4 degrees of sweep, making them ideal for tight spaces and jobs needing accurate movement. According to the company, the ratchets meet 200% ANSI torque specifications. They have an ergonomic handle and the ratchet head can be serviced quickly and easily. The ratchets are available in 1/4" drive (No. HDR410), 3/8" drive (No. HDR614), and 1/2" drive (No. HDR818).

For more information visit
FleetMaintenance.com/21230955



Features an outer layer of orange insulation

The **Cementex Updated Double-Insulated Wrenches** now feature a continuous outer layer of orange insulation to provide a smooth transition between the dual-layer and single-layer portions of each tool. The enhanced design enables the work end of the open-end, box-end, and geared wrenches to be slimmer. According to the company, the insulation is guaranteed to pass a 10,000 VAC proof test in accordance with applicable U.S. and international standards.

For more information visit
FleetMaintenance.com/21255608

GET A GRIP

LOCKING PLIERS

**CURVED JAW + COMBINATION JAW +
FLOATING JAW + PARALLEL JAW +
NEEDLE NOSE + C-CLAMP +
WELDING AND MORE**



100-07
CURVED JAW - 7"



104-08
COMBINATION JAW - 8"



110-07
C-CLAMP JAW - 7"



114-07
SHEET METAL WELDING JAW - 7"

LANG TOOLS
Professional Tools For **4 Generations**

WWW.LANGTOOLS.COM

FleetMaintenance.com/inquire

Shop Equipment Purchase Considerations

- ✓ Physical weight
- ✓ Capacity
- ✓ Efficiency, versatility, productivity, etc.
- ✓ Safety features
- ✓ Ease of operation
- ✓ Ergonomics
- ✓ Accessories and options
- ✓ Power requirements
- ✓ Maintenance requirements
- ✓ Construction
- ✓ Lifecycle
- ✓ Will it fit the available work space?
- ✓ Storage considerations
- ✓ Durability
- ✓ Warranty
- ✓ Training resources
- ✓ Product and technical support
- ✓ Brand reputation
- ✓ Budget range/price
- ✓ Available financing



Designed with an all-metal frame

The **Graco LDX, SDX, and XDX Hose Reels** are designed for a smoother release and consistent recoiling. The hose reels can handle all common fluids and include an all-metal frame. The LDX offers value for smaller environments. The SDX is ideal for applications requiring frequent use such as at dealerships and maintenance facilities. The XDX is sealed and suitable for heavy-duty use in indoor or outdoor environments, such as maintenance facilities, lube trucks, and heavy-duty equipment dealer applications.

For more information visit
FleetMaintenance.com/21238555



Sturdy, large base provides stability

The **Martins Industries Pneumatic TBR and OTR Tire Spreader**, No. MTRS-HD, is ideal for truck, bus, and commercial/public utility tires with its heavy-duty, automatic tire-lifting platform and spreader hooks, tire rollers, and roll-on ramp. Swivel hooks on both sides sit on the bead without damaging it and adjust to tire width and sidewall height. When ready, use the first joystick to lift/lower tire and the other one to spread/release it. The tire spreader features a large tool tray as well as an air outlet on the base. It also has a wide-opening lamp mounted on the fully flexible arm to allow users to illuminate and inspect the inside of the tire.

For more information visit
FleetMaintenance.com/21214475

Includes three output options

The **Clore Automotive PRO-LOGIX 12V 1.0A Battery Charger/Maintainer**, No. PL2112, from SOLAR utilizes advanced microprocessor-controlled logic to deliver a fully automatic, precisely controlled charging routine to optimally charge and maintain each battery serviced. It has the ability to properly charge different lead acid battery types, including conventional, AGM, gel cell, spiral wound, deep cycle, and marine batteries, as well as LiFePO4 lithium batteries. Additionally, it offers an advanced battery maintenance routine once the battery has reached full charge. The PL2112 also incorporates many safety features. It includes three output options: clamps, rings, or 12V male adapter.

For more information visit
FleetMaintenance.com/21222722



Tablet-operated wheel alignment system

The **Rotary R1065 Mobile Tablet Aligner** is designed to offer shops of all sizes an easy-to-use solution for performing wheel alignments.

The tower-free alignment system doesn't require a minimum bay size and comes on a portable, compact cart with sensor chargers built in. It features four-point wheel clamps and wireless measuring heads. It's also tablet-operated, Wi-Fi-enabled, and is magnetized, allowing technicians to perform wheel alignments anywhere in the shop. With the system's sensor technology, technicians can make live adjustments quickly and accurately. Once the work is completed, the technician can email or print a personalized alignment.

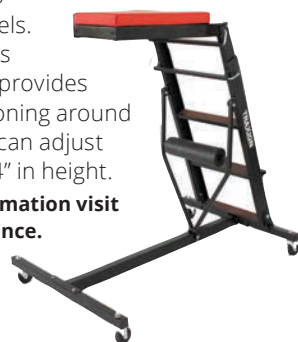
For more information visit
FleetMaintenance.com/21225930



Adjusts from 48" to 64" in height

The **TraXion Topside Creeper NXT** enables technicians to work safely from the topside of the engine compartment. Mounted atop the ladder section is an adjustable padded deck for the technician to rest upon while reaching into the engine compartment. The tool, which assembles in about 12 minutes, folds flat for easy and compact storage, has locking casters for security and leverage, and offers more height adjustment points than its previous models. Additionally, its I-base design provides flexible positioning around the vehicle. It can adjust from 48" to 64" in height.

For more information visit
FleetMaintenance.com/21220130



PROVEN RELIABILITY AND TOUGHNESS

BendPak Model
XPR-18CL
Two-Post Lift



SUPER-DUTY TELESCOPING ARMS

AUTOMATIC ARM RESTRAINTS

FRAME CRADLE PADS

BendPak Model
PCL-18B-6
Mobile Lift System



FULL MOBILITY

SIMPLE OPERATION

ADJUSTABLE WHEEL FORKS



As a fleet operator, you face many challenges and dealing with equipment downtime shouldn't be one of them. That's why BendPak lifts are designed and built to be some of the most dependable and safe lifts in the world. Constantly changing work conditions and long hours can be tough on fleet operators, but through smart engineering and unmatched reliability, our lifts will ensure your workforce is always moving at maximum efficiency. Check out the full line of BendPak heavy-duty hydraulic vehicle lifts at **bendpak.com** or call us at **1-800-253-2363**.

1-800-253-2363 • **BENDPAK.COM**

©2022 BendPak Inc. All rights reserved.

FleetMaintenance.com/inquire

BP BendPak®



Offers touchless alignment and tread depth measurements

The **Hunter Engineering Quick Check Commercial** is an unmanned alignment and tire tread inspection system for commercial vehicles. The system consists of two patented inspection procedures: Heavy-Duty Quick Check Drive that yields touchless alignment results and Quick Tread Heavy that rapidly and accurately measures tread depth. The real-time results automatically present alignment and tire replacement opportunities to highlight service needs and can be easily shared with customers. The Quick Check Commercial system supports multi-trailer configurations, dual axles, and super-single tires, as well as full-size and medium-duty trucks.

For more information visit FleetMaintenance.com/21242484

Cleans hard-to-reach points with heat and pressure

The **Lawson Products Torrent Parts Washer** combines the triple-action cleaning power of heat, chemistry, and pressure. It uses a water-based, solvent-free surfactant blend, reducing employee risk while cleaning 90% of parts within one minute, according to the company. The aqueous cleaning solution is heated to 131 degrees F, activating the aqueous cleaners and loosening oils and greases. The cleaning chemistry produces zero VOCs and leaves behind a rust inhibitor for maximum protection of parts. Then, tough deposits are blasted away by pressure. A notable feature is that the pressure and solution can be directed by the user where needed.

For more information visit FleetMaintenance.com/21257363



Interchangeable tanks, motorheads, and carts

The **Milwaukee Tool M18 FUEL 6, 9, and 12 Gallon Wet/Dry Vacuums** are designed to outperform 3.5 to 4.25 peak hp corded wet/dry vacuums, the company said.

Each vacuum comes equipped with the company's Powerstate brushless motor, Redlithium technology, and Redlink Plus intelligence hardware and software. Reinforced casters increase the longevity of the wheels while the flexible vacuum hose is built with a custom two-part hose design that is constructed of durable, crush, and twist-resistant materials to prevent tears. The hoses are also built with anti-static material to prevent static buildup and custom rubber gaskets to improve airflow. The vacuums also feature interchangeable tanks, motorheads, and carts.

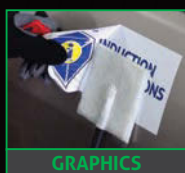
For more information visit FleetMaintenance.com/21258933



Mini-Ductor® VENOM® HP



LUG NUTS



GRAPHICS



GEARS

The **VENOM HP** is the highest powered Mini-Ductor handheld induction heater available at **1800** watts of power. Allows users to heat metal components faster than ever before!

More precise, safe, and reliable than a torch.

INCLUDES:

- > 7/8" Pre-Formed Coil
- > 23" U-Form Coil
- > 41" Bearing Buddy® Coil

This tool is manufactured in the USA with genuine OEM parts. Available through your local tool distributor.



INDUCTION INNOVATIONS
www.theinductor.com
877-688-9633



Follow Us on Social Media:



FleetMaintenance.com/inquire

Extends from 49.5" to 79.75"

The **BendPak LITESTIX** is powered by a rechargeable lithium battery. It uses dual 90-degree swivel handles equipped with magnetic ends to mount on any flat or off-angle metallic surface. The lamp's frame can extend from 49.5" to 79.75" in length and can secure to the underside of a hood with grabbing hooks. It provides up to six hours of continuous use between charges. LITESTIX features an impact-resistant polycarbonate housing.

For more information visit FleetMaintenance.com/21243565





Multiple pin holes for quick and easy adjustments

The **AFF 22 Ton Pin-Style Truck Stand Set**, No. 6422, is designed for supporting trucks, trailers, and equipment in fleet garages, agricultural, industrial, and construction environments. Sold in pairs, the truck stands are made from heavy-gauge steel to provide maximum strength and durability. They have multiple pin holes to allow for quick and easy adjustments, large v-shaped saddle cradles for axles and other components, a large base to provide a stable working platform even on rough terrain, and a carrying handle for convenience and easier positioning.

For more information visit FleetMaintenance.com/21254532



Allows one person to remove calipers and disc brake hub assemblies

The **Disc Brake Dolly**, No. DBD-200, from **Gray Manufacturing** handles both calipers and rotors eliminating the need for additional pieces of equipment in the shop. Gray's DBD-200 is designed to save time and increase shop productivity as all adapters may be stored on the dolly and can be interchanged quickly by pinning and unpinning adapters to the post. Features include a tool tray to hold tools and hardware, handles and four 4" swivel casters for maneuverability, and a rotor adapter and three caliper adapters. Made in the U.S.

For more information visit FleetMaintenance.com/21261514



Extendable top deck

The **Stan Design Engine and Transmission Lift Table**, No. TA2600, is designed to safely and efficiently remove entire engine assemblies, as well as remove or install transmissions. It has a 2,600-lb. capacity and measures 30" by 51". With an air/hydraulic design, the lift table reaches a maximum height of 75" and a minimum height of 23". It features an extendable top deck, locking casters, dual hydraulics, pull handle, and a drilled and tapped surface for mounting fixtures. The deck angle is also adjustable. Optional features include a remote operated pump unit and a fixture kit.

For more information visit FleetMaintenance.com/21243571



Liftmate

AIR-OPERATED TIRE AND WHEEL LIFTS

Available in 3 weight capacities – LM200, LM350 and LM500

- » Reduce Injury Potential
- » Improve Productivity
- » Mount & Demount With Ease



21% of tire/wheel assemblies are heavier and larger now. Making it physically challenging for technicians.

QSP's Liftmate line beats that challenge.

ISO 9001:2015 certified.
Made in USA



QSP
QUALITY STAINLESS PRODUCTS

Contact us for more information!
Mark at 314-699-9613 ext.229 or
by email at mark@GO-QSP.com or
visit us at www.qsponline.com

FleetMaintenance.com/inquire

ZEE LINE by MILTON™

ZE1712 3:1 Piston Pump Kit

- Designed for remote delivery: 3:1 ratio
- Quick and efficient dispensing: 5.8 GPM delivery rate
- Air filter/regulator and pressure relief valve included



www.ZEELINE.com

FleetMaintenance.com/inquire

ESAB Rogue ET 200iP Pro

Reviewed by Michael Robinson, technician/welder at MAS in Lansing, Michigan



Q. How did the tool function as far as saving you time?

A. The welder is very quick to setup and saves previous setup settings to get you back to welding quickly. It's also a dual-voltage machine, meaning no matter where you go you can complete the job, saving time not looking for a certain plug-in to connect to.

Q. How has using this tool impacted your shop's profitability?

A. The tool's time savings on setup and ease of portability allow you to go out in the field quickly and have no worries about running back and forth for other equipment. It saves many labor hours of wasted time.

Q. How was its packaging? Did it come with any accessories?

A. It came well packaged and with just

about everything you need to start welding. It came with a very nice flexible TIG torch and some tungsten and cups to get you started. You will need a bottle of Argon, but the welder does come with a nice regulator and hose for the gas so one less thing to worry about buying separately. The TIG torch has the controls on it, so the foot control is not necessary to start welding. I do prefer a foot control typically for TIG welding, though. Best part is that any accessory you may want is easy to find, although you won't need many as this is a well-equipped bundle.

As far as the stick welding goes, it came with a nice stinger that is really hard to beat for an included accessory. Honestly, some of the nicest

accessories I have ever seen are included with this welder. All the accessories are rated to the maximum output of this welder at 200A. It also came with the 120V/230V power adaptor which is a nice addition to have when 230V may not be available.

Q. What features did you like?

A. The adjustments and its digital easy-to-read display were among my favorites. One thing that really puts this above other similar units is its compact size. It's very easy to transport. It also has a quality fan for keeping it cool. I have never tripped the over-temp safety on the unit thanks to the fan. When you weld with this machine, you can tell it's a quality machine. Arc is very stable. High frequency start is also a huge benefit, and it offers live TIG start.

To read the full review, visit FleetMaintenance.com/21259626.

Portacool Jetstream 250 Evaporative Cooler

Reviewed by Brian Culotta, shop foreman and master technician at Dave's Auto Care in Willoughby, Ohio



unit portable and full throughout the workday. The variable fan speed is nice as well to adapt for varying cooling needs.

Q: How did the equipment function as far as saving you time?

A: In the summer months, our shop was using multiple, less effective, conventional fans. We were able to replace all of those with this one single cooling unit.

Q: How has using this product impacted your shop's profitability?

A: Heat exhaustion is real in the summer months working in the repair industry. Shop temperatures can rise dramatically with poor air circulation and when having one or more vehicles running in the shop simultaneously. Engine bay temperatures can create a very uncomfortable working environment. Keeping our technicians

cool is imperative to maintain their efficiency and accuracy. A comfortable workspace also improves shop morale. I know I can get cranky when I'm overheated.

Q: What kind of setup was involved before using the product?

A: Setup was simple and requires minimal instruction to operate. To maintain the unit's internal water level, we added a continuous water supply. This provided minimal user interaction for optimal operation. Turn it on and go.

Q: What features did you like?

A: Staying cool! The unit holds 55 gallons of water which helps keep the

Q: Is there any way you could think to improve or add to this equipment?

A: When the fan speed is on high, the product is noisier than I'd like. When the fan speed is set to medium, the fan will slow down when additional electronic devices are used in the shop; it is sensitive to voltage fluctuations. If the fan is on high, there are no noticeable fluctuations with fan speed with additional electrical loads.

Q: Have you used a previous version of this tool? How does this tool compare to other tools you've used like it?

A: This is my first time using a Portacool product. It provides much cooler ambient air than a standard shop fan. We run the unit the entire day to help cool our technicians.

To read the full review, visit FleetMaintenance.com/21259624.



Tool Storage Solution Purchase Considerations

- ✓ Required storage capacity
- ✓ Size, storage volume, style, configuration, etc.
- ✓ Space efficiency
- ✓ Number and size of compartments, trays, etc.
- ✓ Organizational options and accessories
- ✓ Ease of use
- ✓ Expandability/upgradeability
- ✓ Construction and material type
- ✓ Strength and durability
- ✓ Color, finish, fit, graphics, etc.
- ✓ Portable, wheeling, or stationary
- ✓ How well will the storage solution fit in the work space or with existing storage solutions?
- ✓ How are tools and equipment safeguarded?
- ✓ Built-in locks, latches designed for padlocks, electronic systems, or other secure locking mechanisms?
- ✓ Would complete systems for tool and asset monitoring and control be beneficial?
- ✓ Additional power source for charging personal electronics and cordless tools?
- ✓ Quality
- ✓ Warranty
- ✓ Product support
- ✓ Brand reputation
- ✓ Budget range/price

Can also be used as a personal work station

The **Launch Tech TWT-100 Tool Trolley** is durable and offers ideal tool storage for any shop. It can also be used as a personal work station with room for various tools including computers, scanners, and more. It features a user-friendly design with push-pull handles, universal wheels, and a hook rack for wire. It is equipped with a keyed locking system and is made of high-quality steel with at least 2mm thickness.

For more information visit FleetMaintenance.com/21217233



Allows for simple visual inventory control

The **Shadow Tool Staging Systems'** design provides open physical and visual access. Features include four 8" wheels, power support, battery charging drawer, six center shelves, four stanchion racks, 10" by 14" table on swivel arm, a 15" shelf, and more. The fully enclosed system is secured with a keyed lock and measures 6' 5" tall by 30" deep by 36" wide.

For more information visit FleetMaintenance.com/21247065

Available in three trim colors



The **Mechanic's Time Savers Switch Cart** offers both a lift and slide top lid. The cart measures 36" in width by 26" in depth by 45" in height. Made from heavy-duty steel, the cart has 125-lb. drawer slides and 175-lb. top lid slides. Additional features includes three drawers, four power outlets, two 3.0 USB ports, heavy-duty 2" by 6" casters, textured paint, PVC drawer liners, gas strut lifts, lift latch drawer pulls, and a locking capability. The cart is available in three trim colors: black, red, and yellow.

For more information visit FleetMaintenance.com/21240835



Available in six colors

The **U.S. General 34" 6-Drawer Full Bank Service Carts** from **Harbor Freight** are designed to last with a one-piece, fully welded body for maximum strength and a chemical resistant and scratch resistant powder coat finish to withstand years of use. To prevent accidental dings, dents, and scratches around the shop, the carts offer built-in impact resistant corner guards. They also feature gas struts that open to a full 90-degree angle, internal pry bar storage system, pass-through ports, six full-width drawers with heavy-duty ball bearing slides, integrated locking system, non-slip liners, and four swivel casters (two that lock). The carts are available in six colors: red, black, orange, yellow, blue, and green.

For more information visit FleetMaintenance.com/21229824

Adjustable shelves, stainless steel work surface

The **Homak 24" CTS Side Locker** adds additional storage with two adjustable shelves, a stainless steel work surface, and four drawers. This locker features a power strip with two grommet cutouts, a bold UV protective high-gloss finish, lift-latch drawer pulls, and non-slip PVC drawer liners. Available with a tool board or solid backplash. The CTS Side Locker comes with the HMC High Security Tubular Locking System.

For more information visit FleetMaintenance.com/21234331





TOOL STORAGE

Includes three tool chests and cabinets

The **GEARWRENCH GSX Series Tool Storage** includes three tool chests, each compatible with one of three rolling tool cabinets. Gas-charged lift support struts offer easy opening and closing. The GSX Tool Cabinets roll on heavy-duty industrial casters. Drawers ride on ball bearing slides for ideal load capacity and easy slide action. The GSX Chests and Cabinets come in matching sizes (26", 36", and 41") and can be paired together.

For more information visit FleetMaintenance.com/21217759



Available in seven colors

The **Cornwell Quality Tools PLATINUM 84" 14-Drawer Triple Bank Cabinet** is powder coated inside and out and available in seven colors. With a cage frame construction, the drawers are supported by 260-lb. capacity ball bearing slides with an integrated TLC bearing mechanism. Each drawer features a 4mm thick, non-slip liner and a full-length pull with decorative end caps. Electric power strips, each with five standard outlets and two USB outlets, are positioned in two locations: a drawer with storage capacity for battery powered tools and a repositionable housing at the back of the cabinet's work surface. A polished electronic lock with built-in cam provides keyless security.

For more information visit FleetMaintenance.com/21220695



Increased head clearance height of 6' 1"

The **SP Tools USA Sumo Series Toolboxes** feature double wall construction using 14.5ga steel. Users can charge cordless tools, lighting, and diagnostic equipment with the integrated power system. Each spring-loaded caster can support 881 lbs. The drawer retention system has a single-handed release and open function. The Sumo Series hutchches offer an increased head clearance height of 6' 1". Series includes 34", 42", 59", 73", and 128" cabs and workstations.

For more information visit FleetMaintenance.com/21258935

Features a thermoplastic worktop

The **Beta Tools C50S Service Tool Trolley with 3-Drawers** is designed to offer flexibility and storage on the go. It features a thermoplastic worktop, front centralized safety lock, and an 882-lb. load capacity. Each drawer measures 2.75" high, have ball bearing slides, and are protected by foam rubber mats. The large lower shelf is protected by an anti-oil and anti-rubber mat. The tool trolley also includes a convenient side screwdriver holder, two side built-in spray can holders, and four 5" casters (two fixed and two steering, one with brake).

For more information visit FleetMaintenance.com/21230096



Features two full-length deep drawers

The **Matco Tools 2S Double Bay 25" Toolbox** is an ideal entry-level line of tool storage for students and new technicians. Notable features include a power drawer with 110V and USB power, two full-length deep drawers to store larger sockets and socket sets, kickplate for durability, and aluminum overwrapped handles that protect against damage. Built with a unibody construction, the T-shaped center shelf and inner walls are fully-welded at all connection points to ensure the toolbox is sturdy, stable, and secure. The 2S is available in five colors: red, white, black, gray, and blue. Additional storage can be added with a 2S hutch.

For more information visit FleetMaintenance.com/21229407



Customized storage solution for work trucks or the shop

The **High-Performance Aluminum Cabinets** from **CTech Manufacturing** can be customized quickly and easily. Users are able to design, visualize, customize, and order the cabinets online with CTech's cabinet builder. The cabinets provide an ideal fit and finish as well as include features such as MotionLatch drawers and doors, fastener construction, powdercoat finish, and more.

For more information visit FleetMaintenance.com/21233390

**BOSCH**

Invented for life



Expert-level solutions for heavy-duty problems

A powerhouse lineup of connected diagnostic solutions that work together seamlessly to solve complex, cross-functional problems at every stage of the repair process. Engineered to optimize troubleshooting, boost efficiency, and alleviate tedious tasks while empowering you to focus your expertise on delivering quality repairs with precision and confidence.



HPT 500 High Pressure Leak Tester

The Bosch HPT 500 high pressure leak tester is a cost-effective, safe alternative that will change standard practices for heavy duty preventive maintenance and repair.



HDS 250 Heavy-Duty Scan Tool

Read, diagnose and clear heavy duty standard trouble codes on class 4 - 8 vehicles.



BAT 155 Heavy-Duty Battery Tester

The BAT 155 is an advanced heavy duty battery & electrical system tester designed for the commercial vehicle industry.



3824A ESI[truck] Heavy-Duty Scan Tool

With easy-to-use software and a massive array of technical information, technicians can perform an ultra-fast and accurate diagnosis on North American commercial and heavy duty vehicles to get the repair done right and the vehicle back in operation.

Solutions for every job.

boschdiagnostics.com

FleetMaintenance.com/inquire

WANT TO TAKE YOUR DIAGNOSTICS TO THE NEXT LEVEL?

- ✓ **ALL MAKES:** Hino, Fuso, Isuzu, Ford, GMC/Chevrolet, Mercedes-Benz, Dodge, and many more!
- ✓ **Diagnose it all!** Engine, Brakes, Aftertreatment, Transmissions...
- ✓ **Authorized FCA Access**
- ✓ **ALL of your dealer level calibrations and parameter settings, INCLUDING PTO's!**
- ✓ **Wiring schematics, Component locations, TSBs, Vehicle service data...**



NEW JALTEST LCV MODULE

FleetMaintenance.com/inquire

**FOR THOSE WHO WORK ON LIGHT AND
MEDIUM COMMERCIAL VEHICLES**



**All Makes
Dealer-Level
Diagnostics**

cojaliusa.com · info@cojaliusa.com · 800-975-1865

CONTACT US

